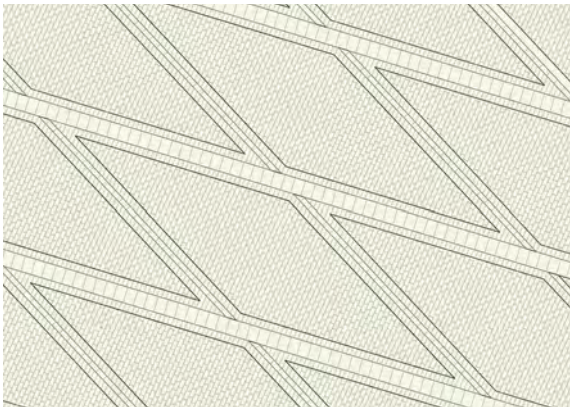
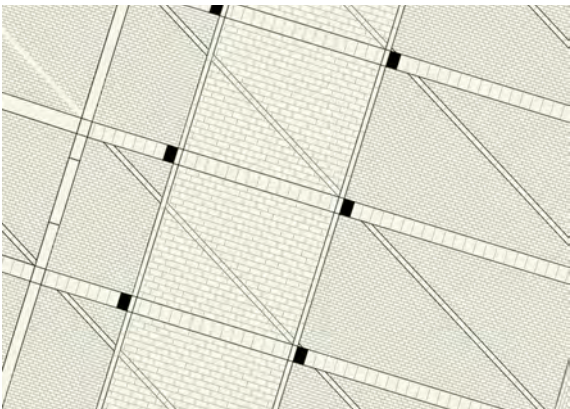


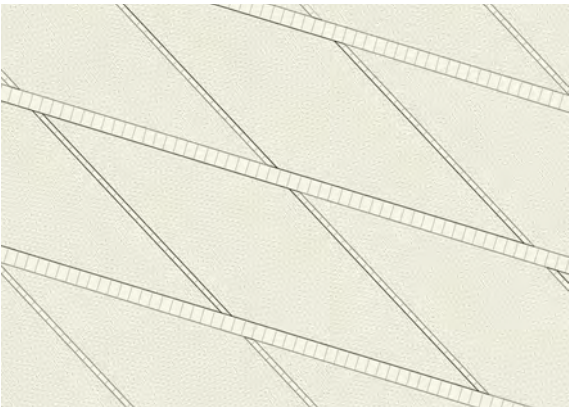
diamond paving



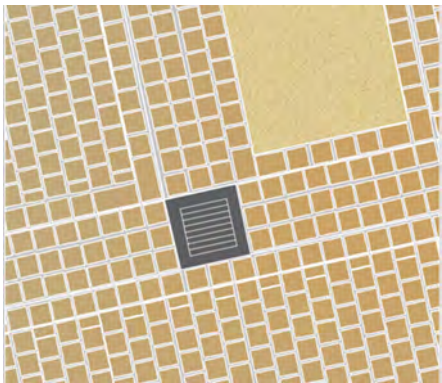
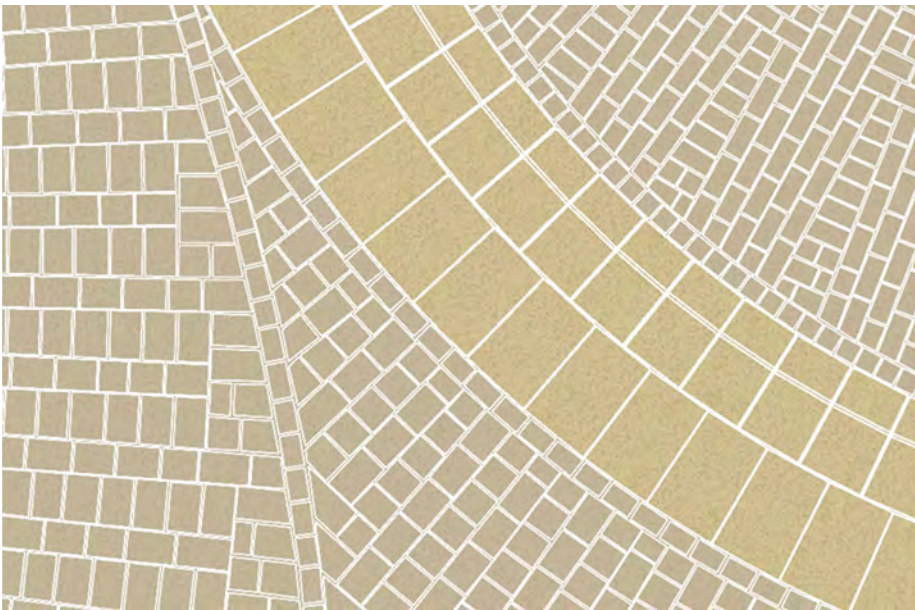
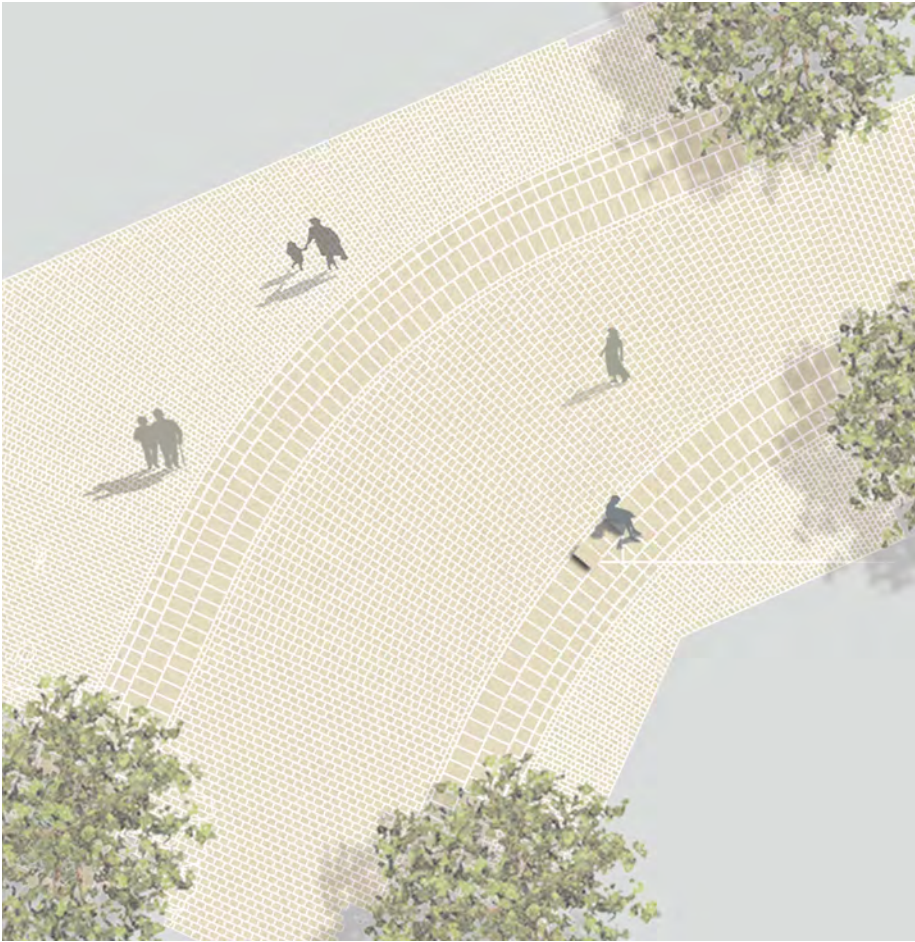
rhomboid paving with slab frame
and small cobbles

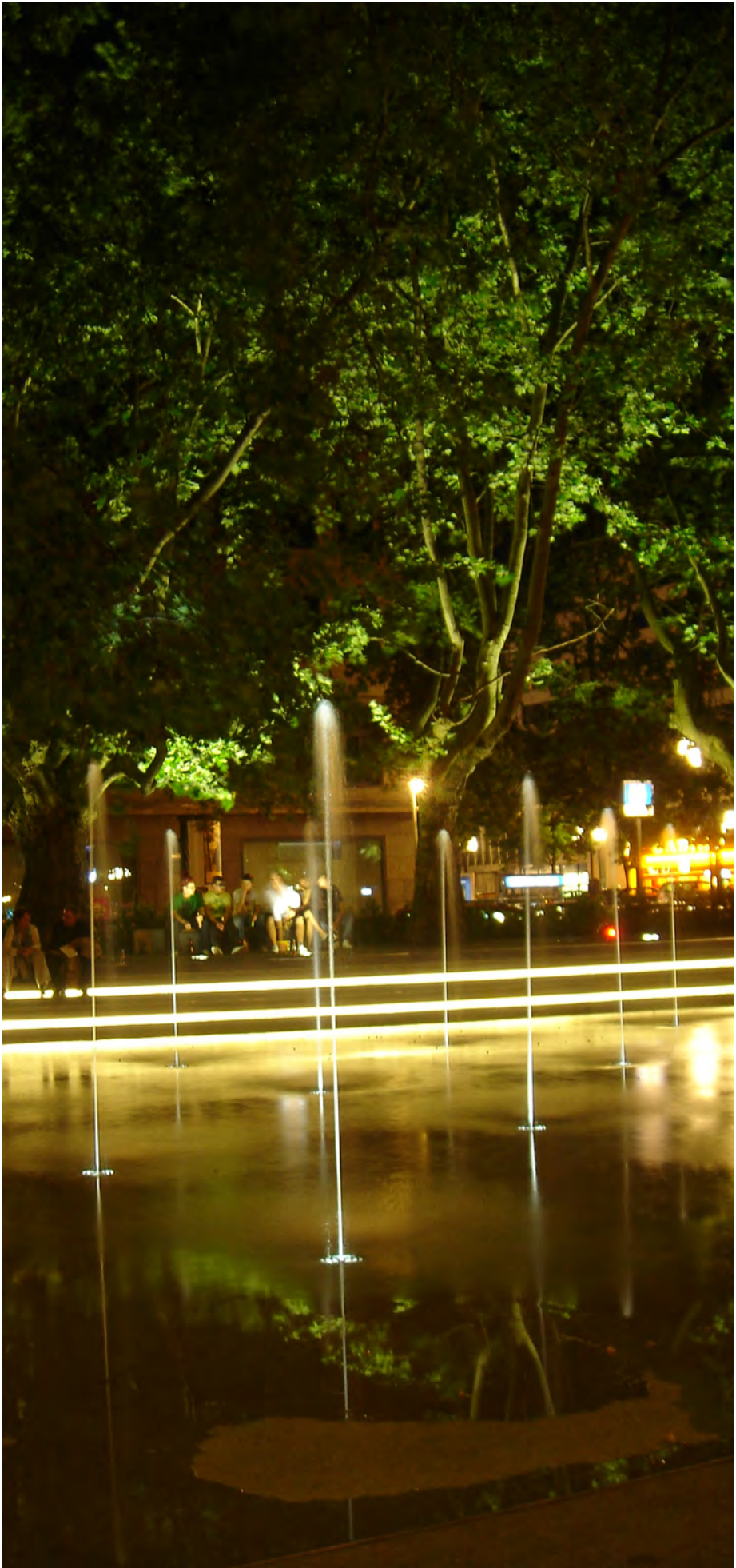


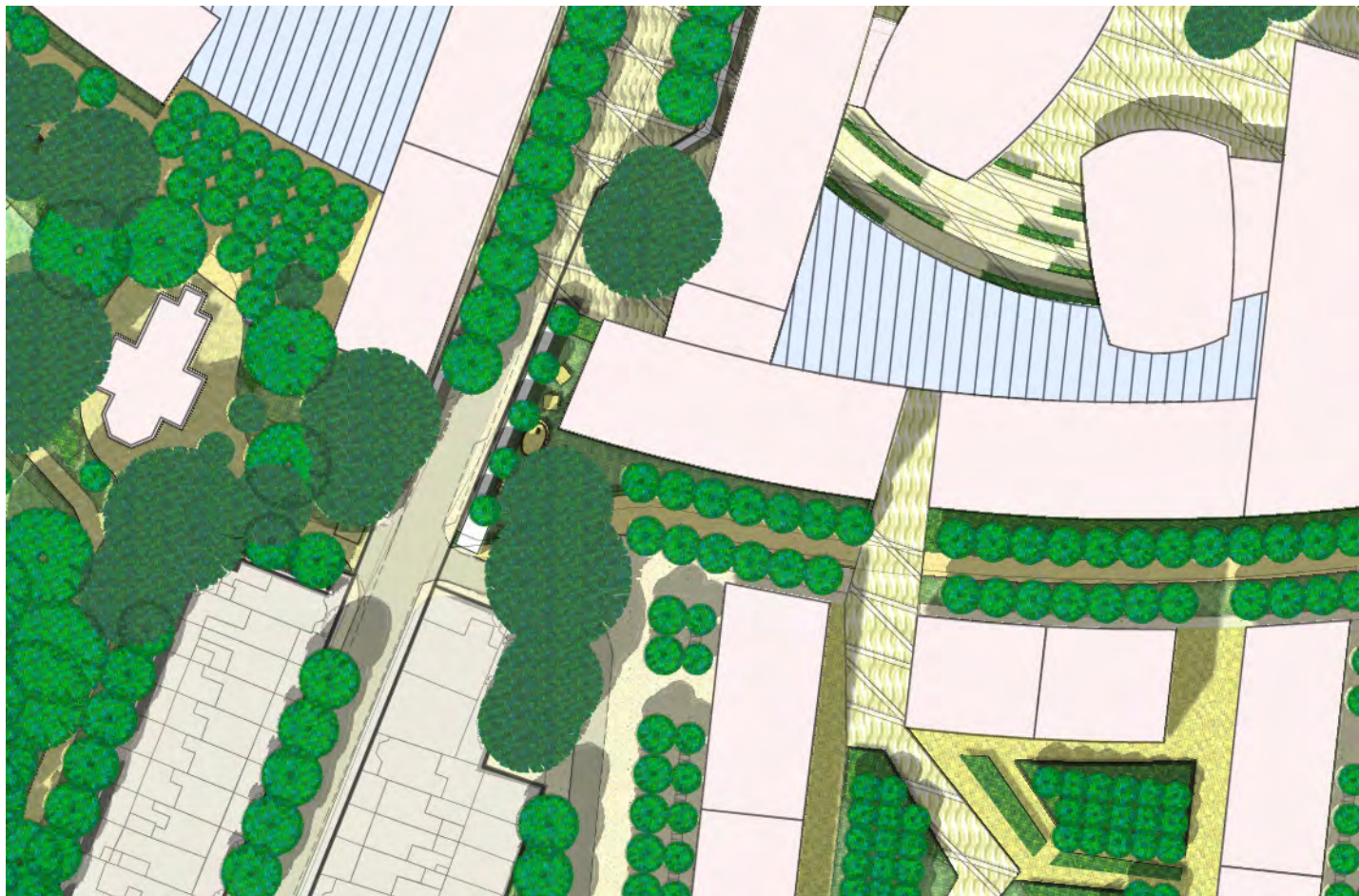
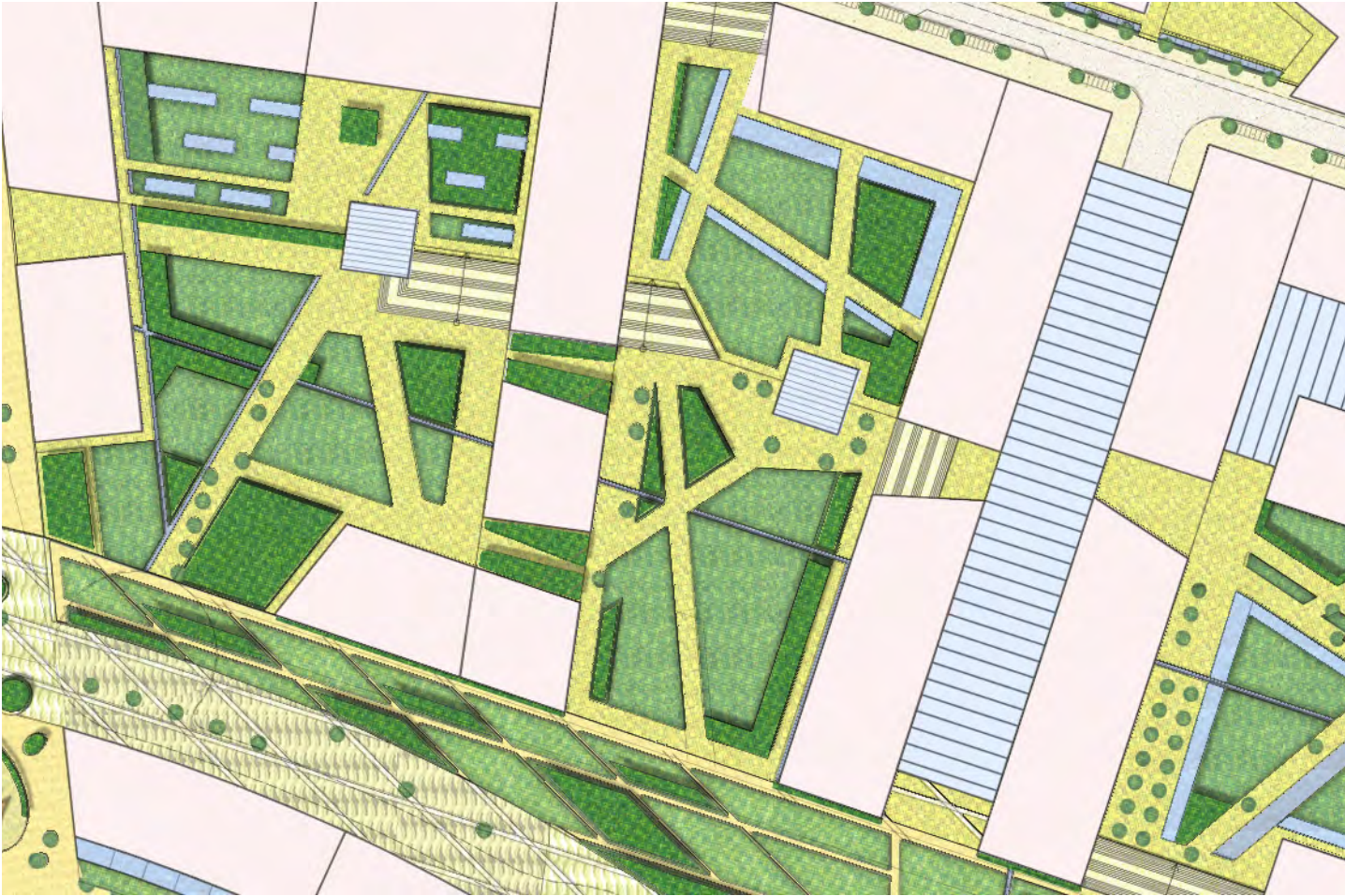
rhomboid paving with slab frame, small
cobbles and large sett for traffic zone

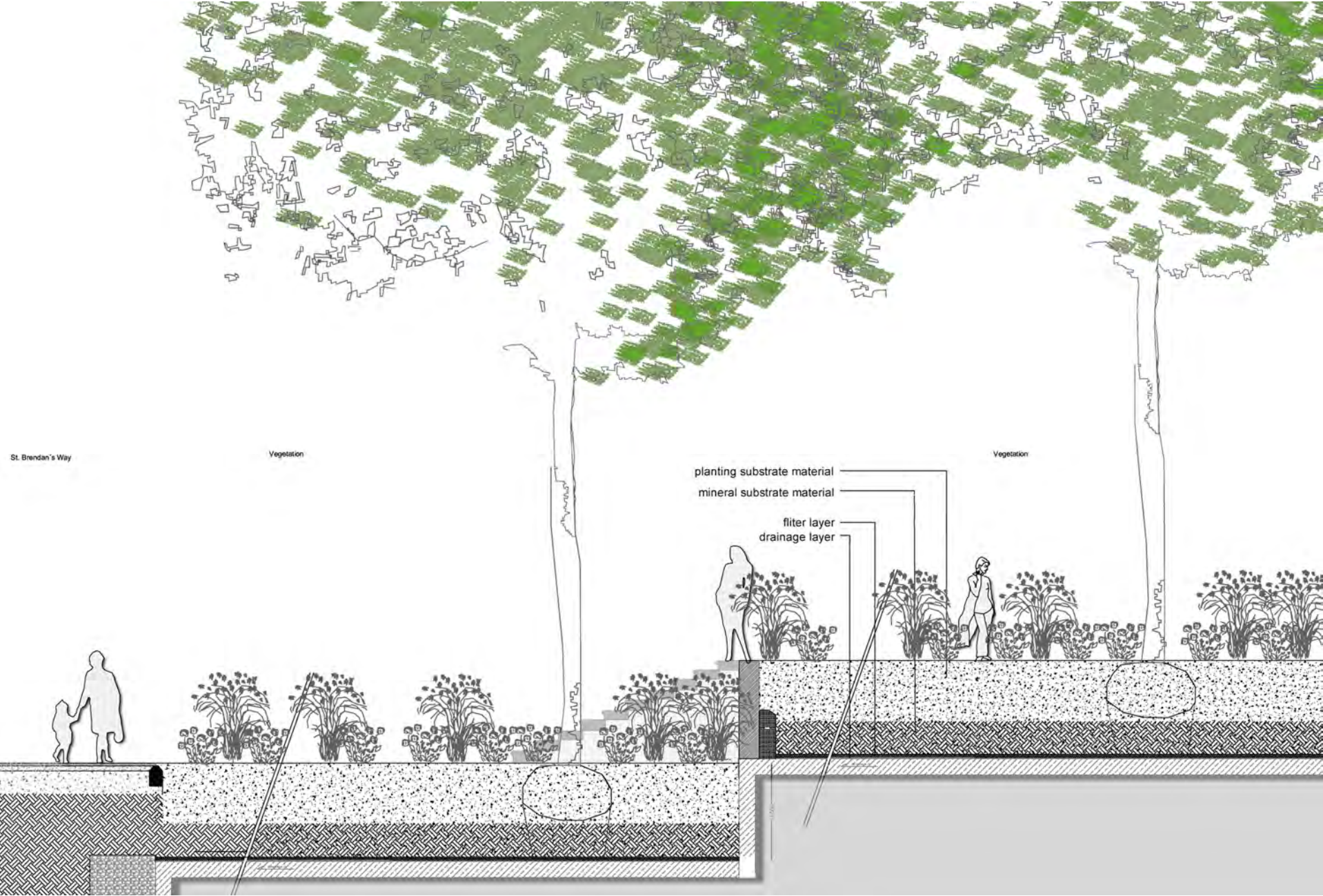


rhomboid paving with slab frame
and asphalt (terrazzo)

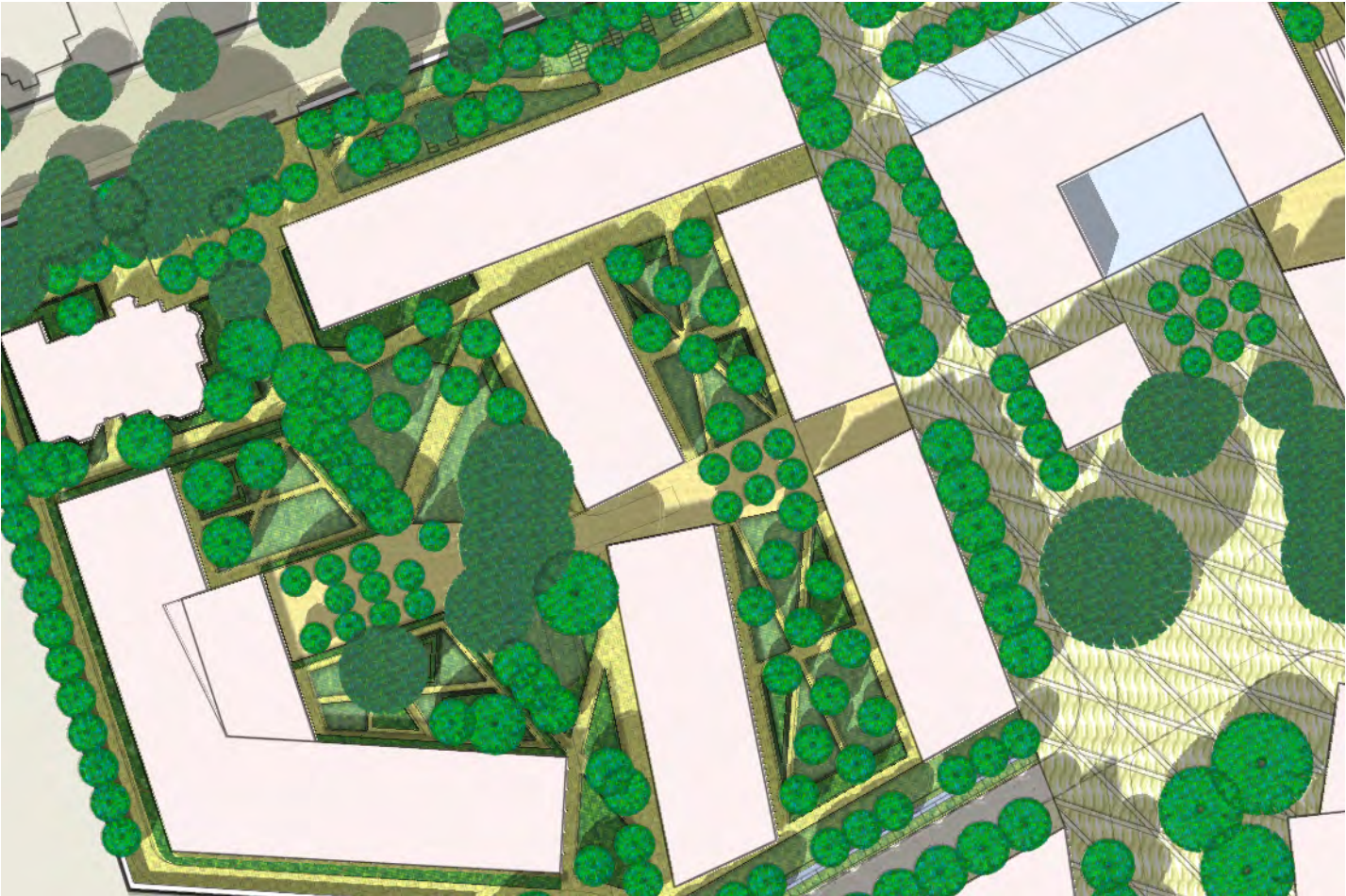
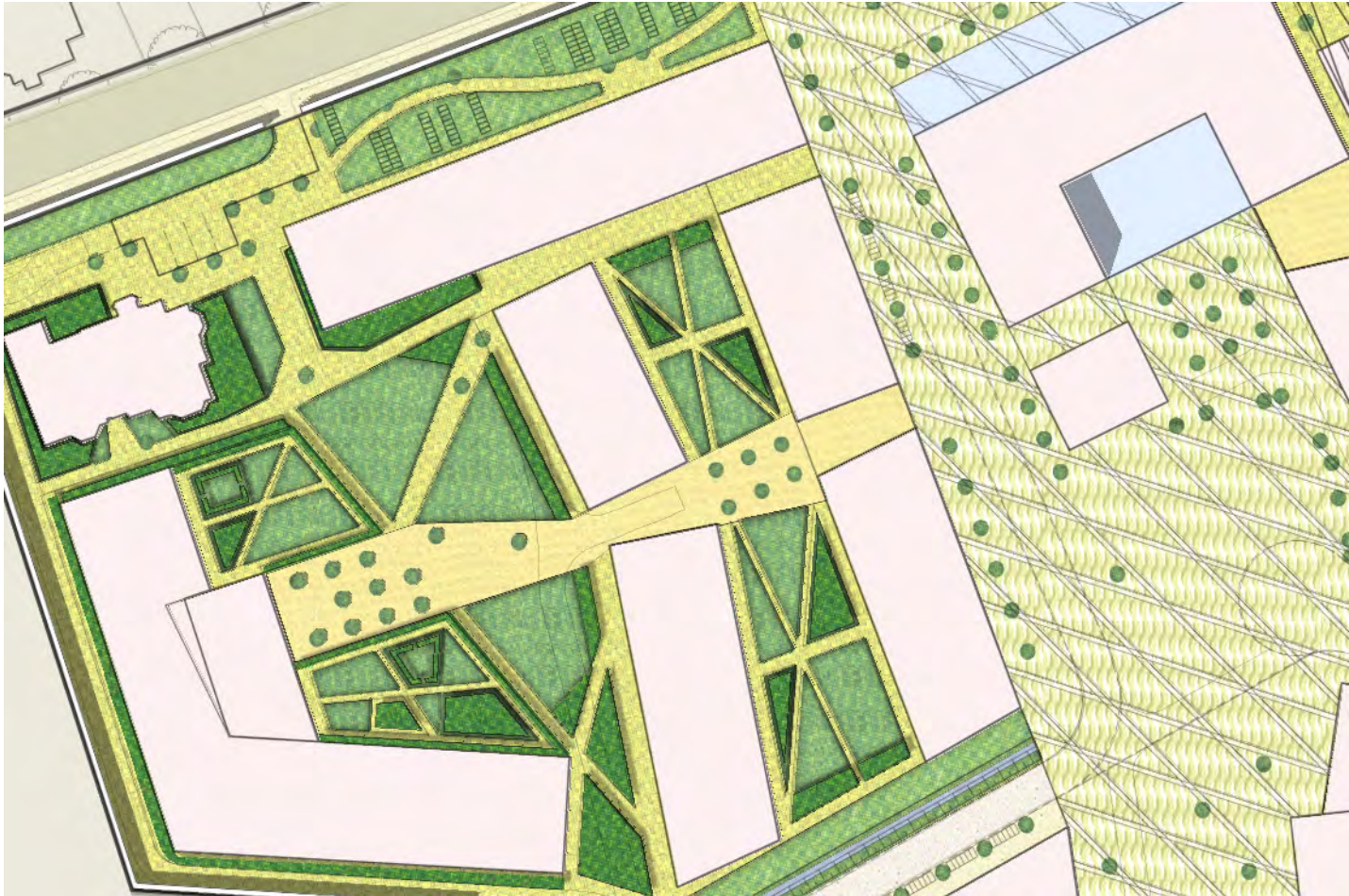






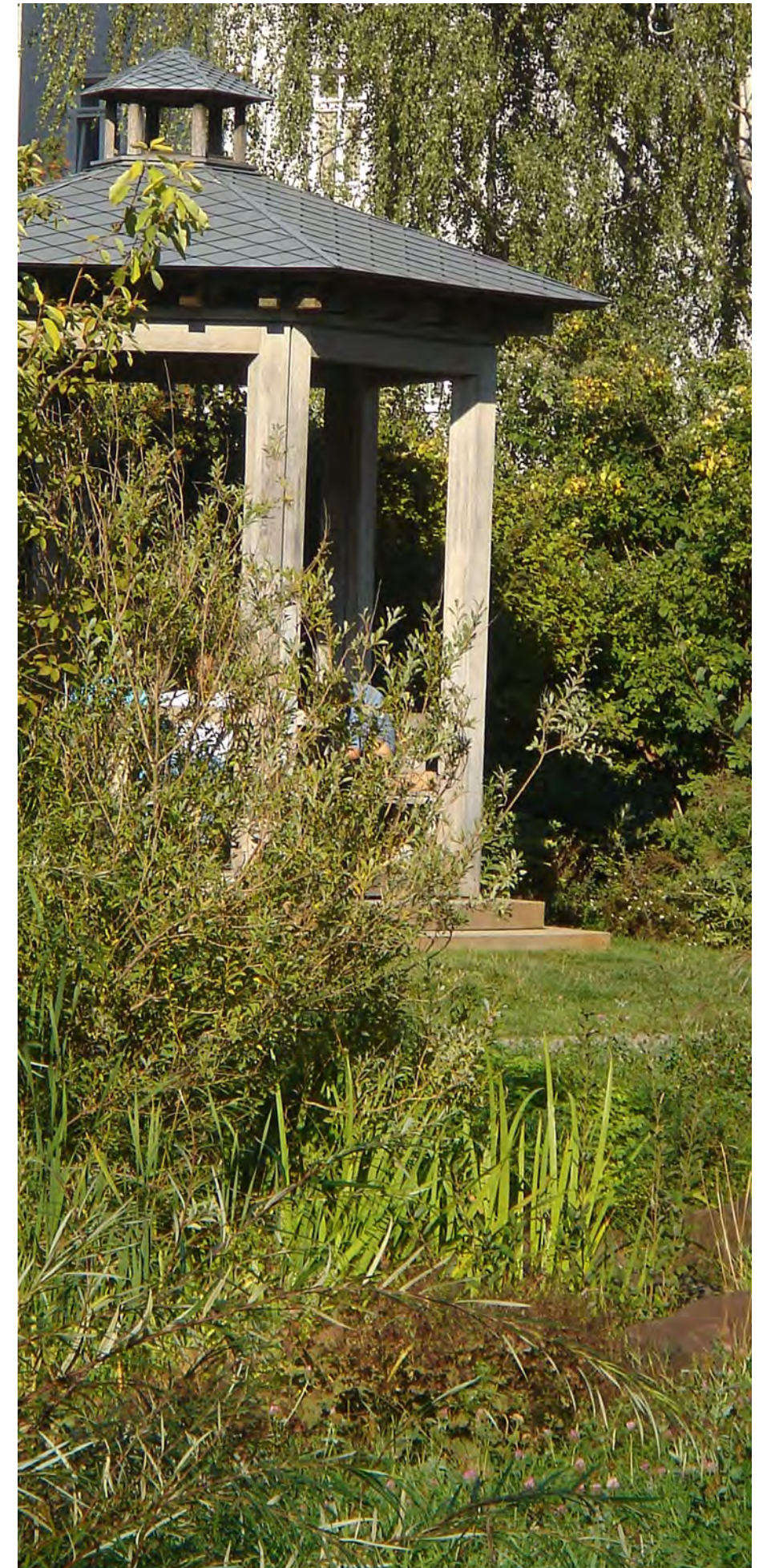
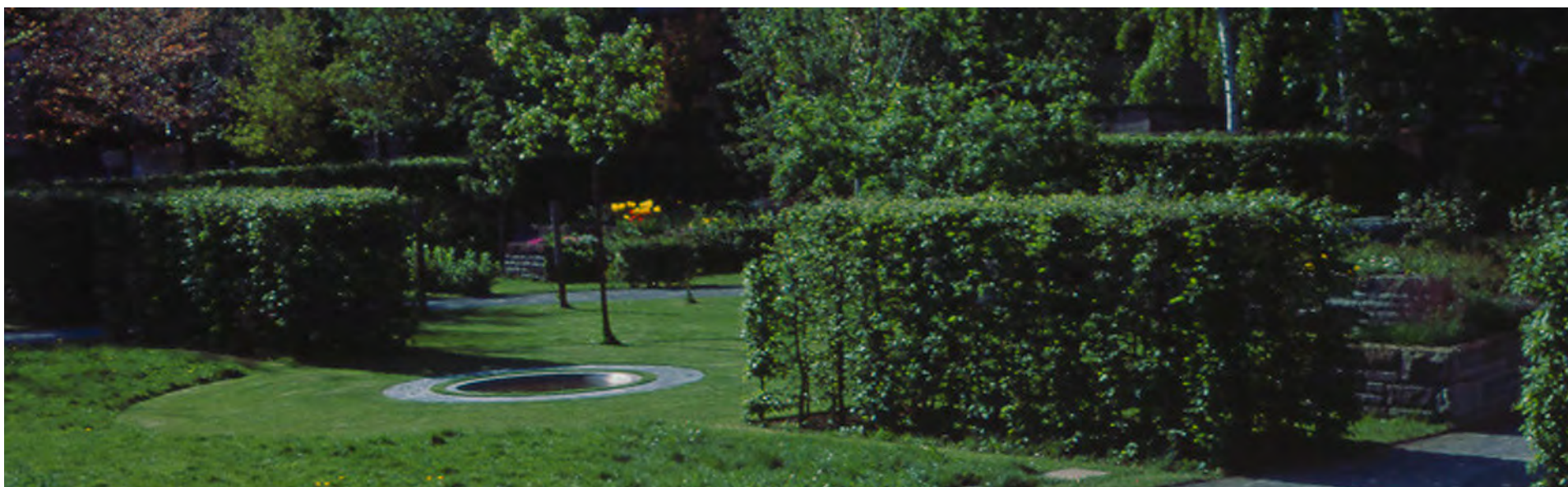




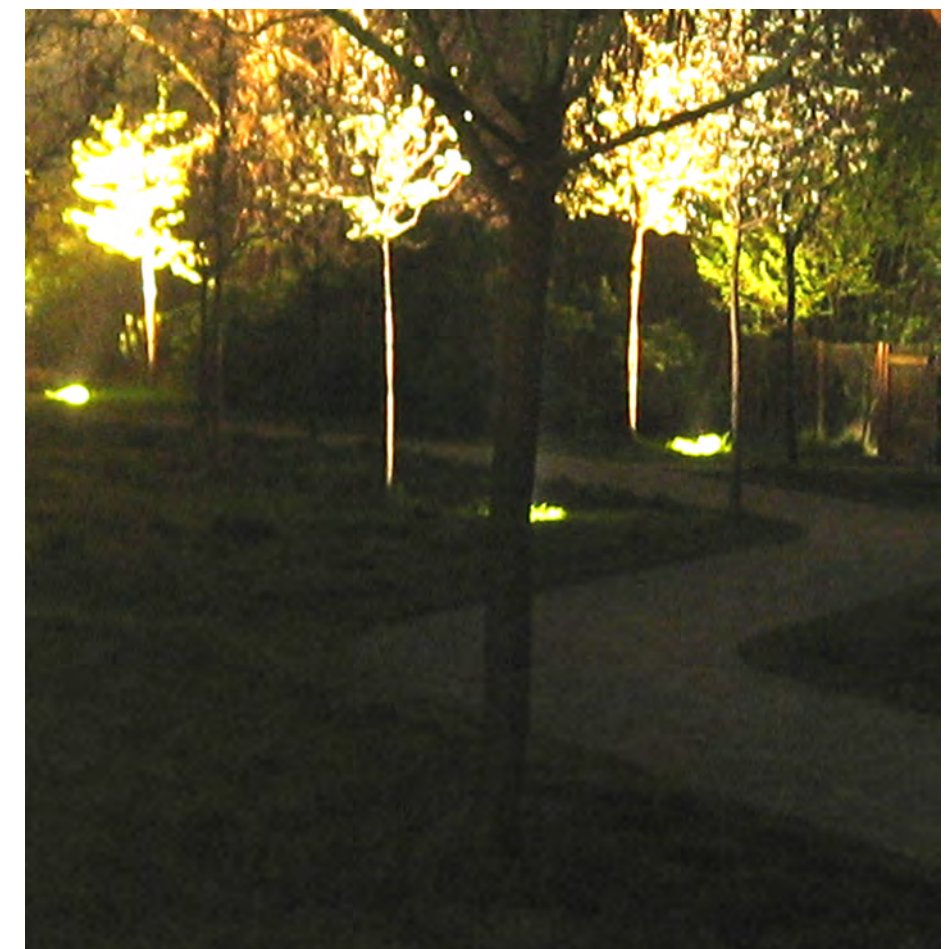




various types of gardens.... colour, ordour, taste, sounds of birds and water...

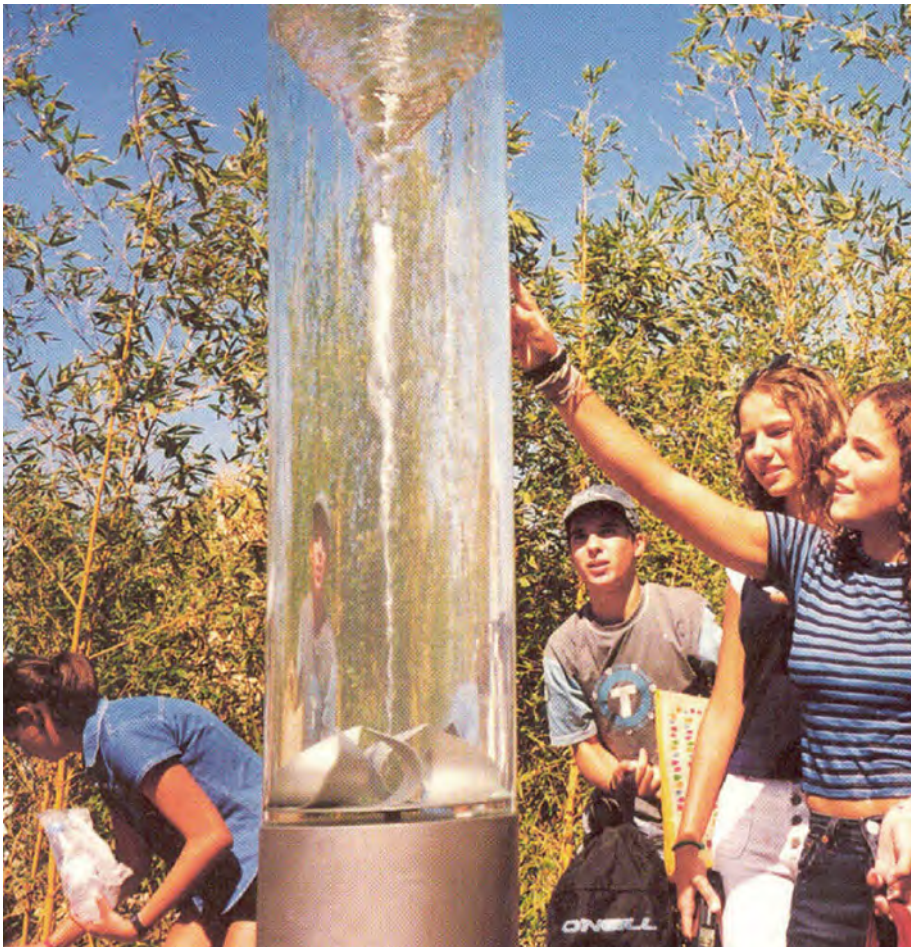


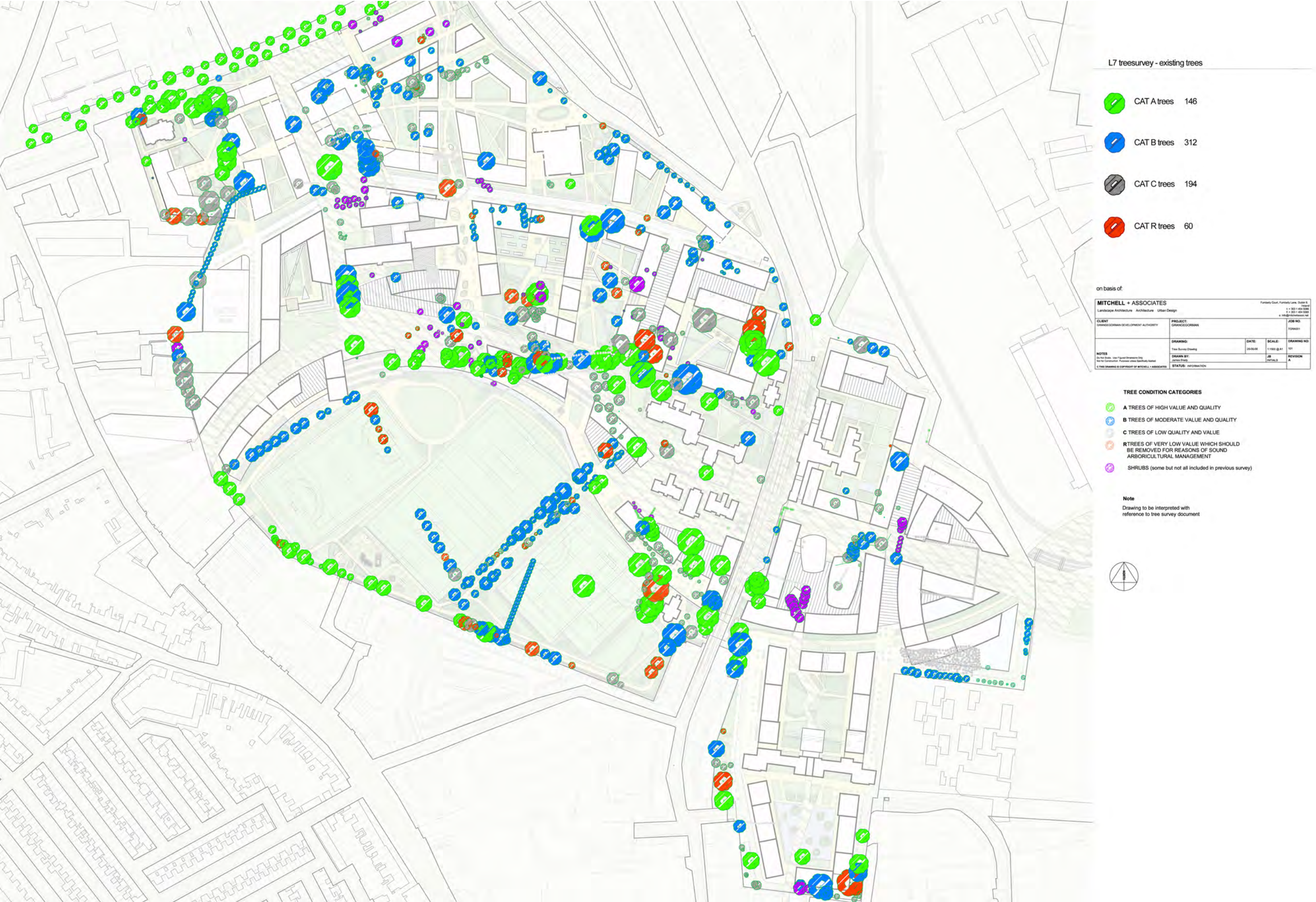


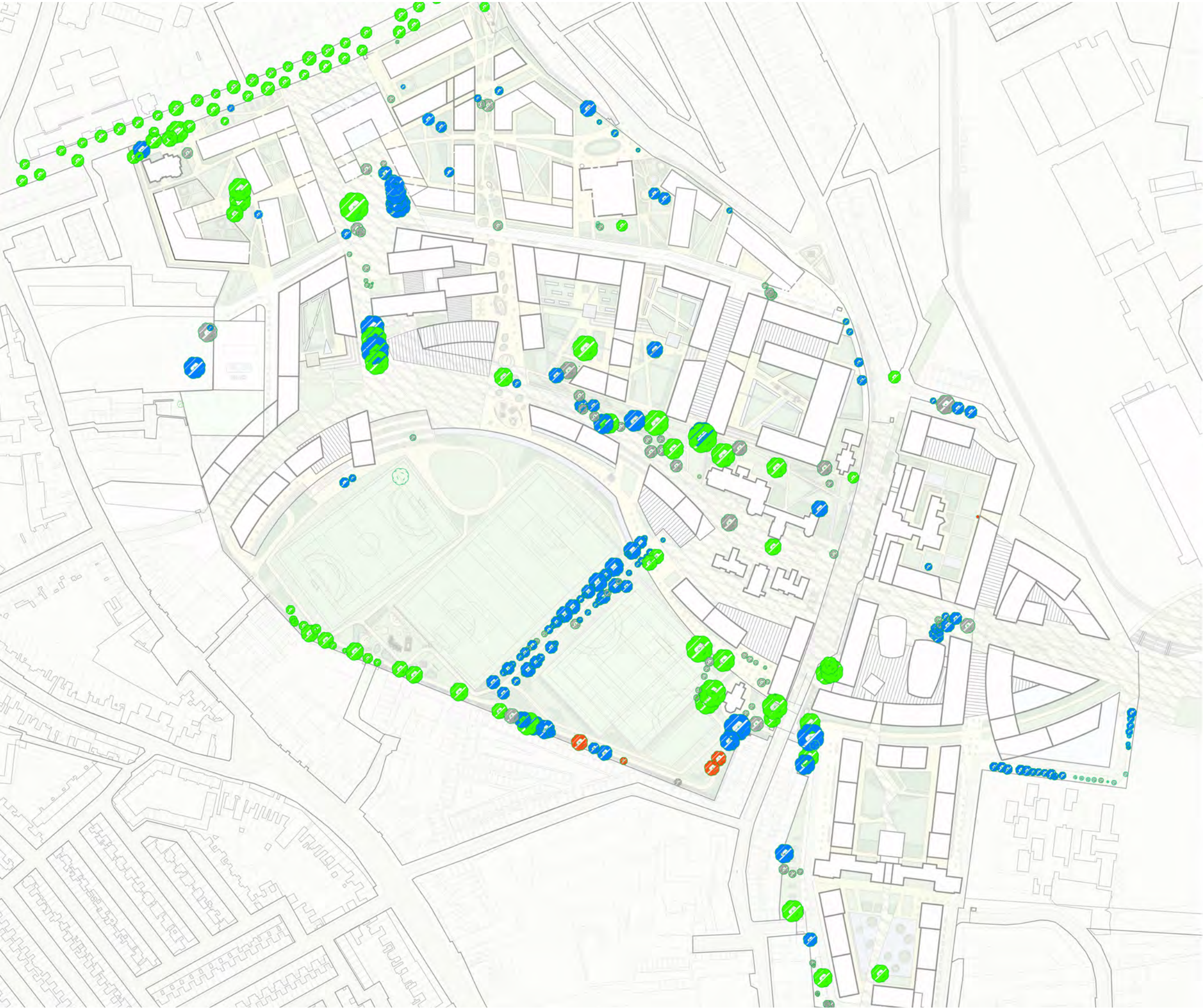












L7 treesurvey - trees intend to be retained

	CAT A trees	104
	CAT B trees	154
	CAT C trees	91
	CAT R trees	6

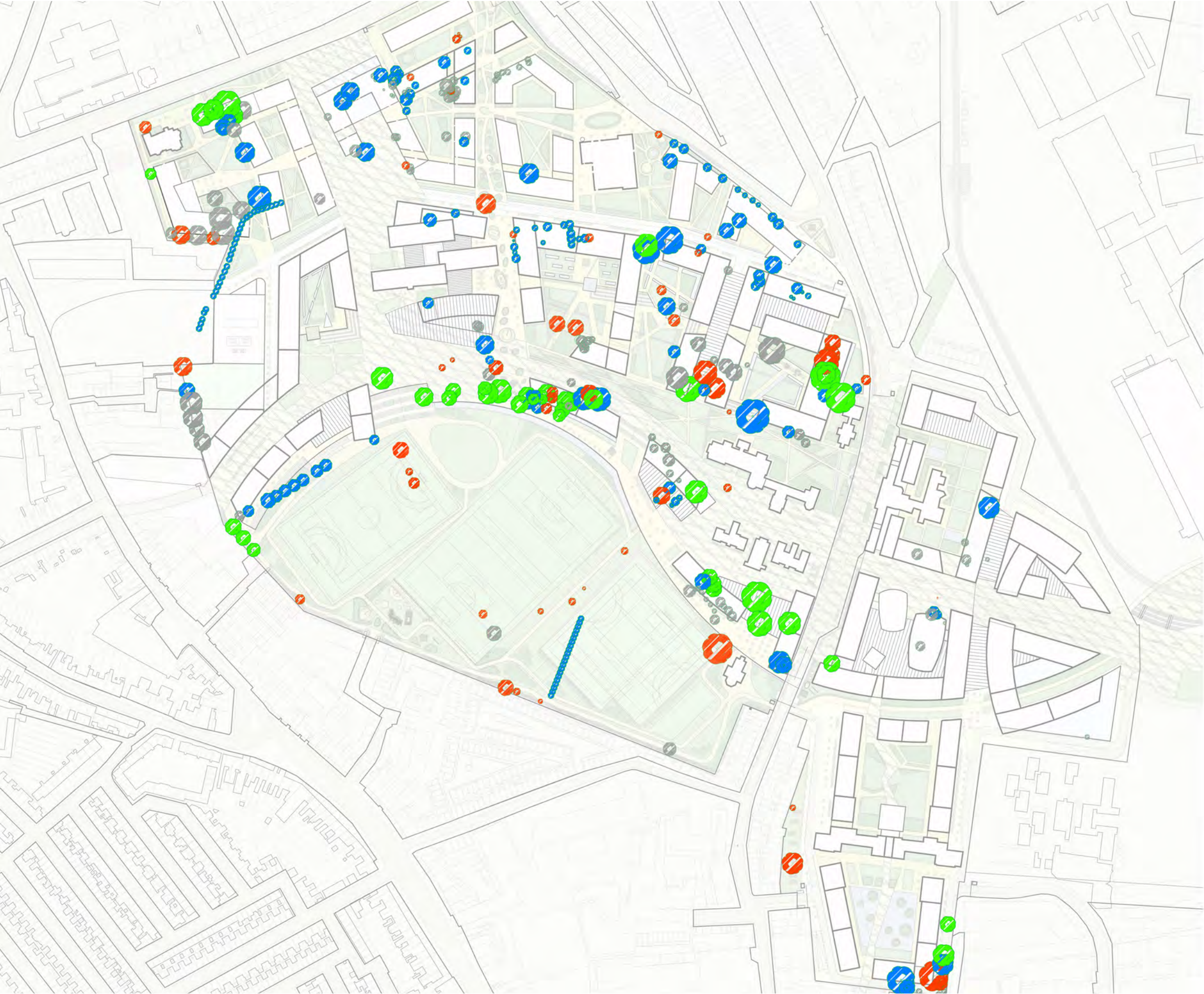
on basis of:

MITCHELL + ASSOCIATES Landscape Architecture Architecture Urban Design				
CLIENT GRANGEGORMAN DEVELOPMENT AUTHORITY		PROJECT GRANGEGORMAN		JOB NO. TG0001
NOTES Do Not Scale - Use Figure Dimensions Only. Not To Construction - Figures are for Guidance Only. © THIS DRAWING IS COPYRIGHT OF MITCHELL + ASSOCIATES	DRAWING Tree Survey Drawing	DATE 26-06-08	SCALE 1:100 @ A1	DRAWING NO. 101
	DRAWN BY JAMES STONE	JOB DETAILS		REVISION A
STATUS: INFORMATION				





TREE CONDITION CATEGORIES

- A TREES OF HIGH VALUE AND QUALITY
- B TREES OF MODERATE VALUE AND QUALITY
- C TREES OF LOW QUALITY AND VALUE
- R TREES OF VERY LOW VALUE WHICH SHOULD BE REMOVED FOR REASONS OF SOUND ARBORICULTURAL MANAGEMENT
- SHRUBS (some but not all included in previous survey)

Note
Drawing to be interpreted with reference to tree survey document




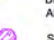



L7 treesurvey - removed trees

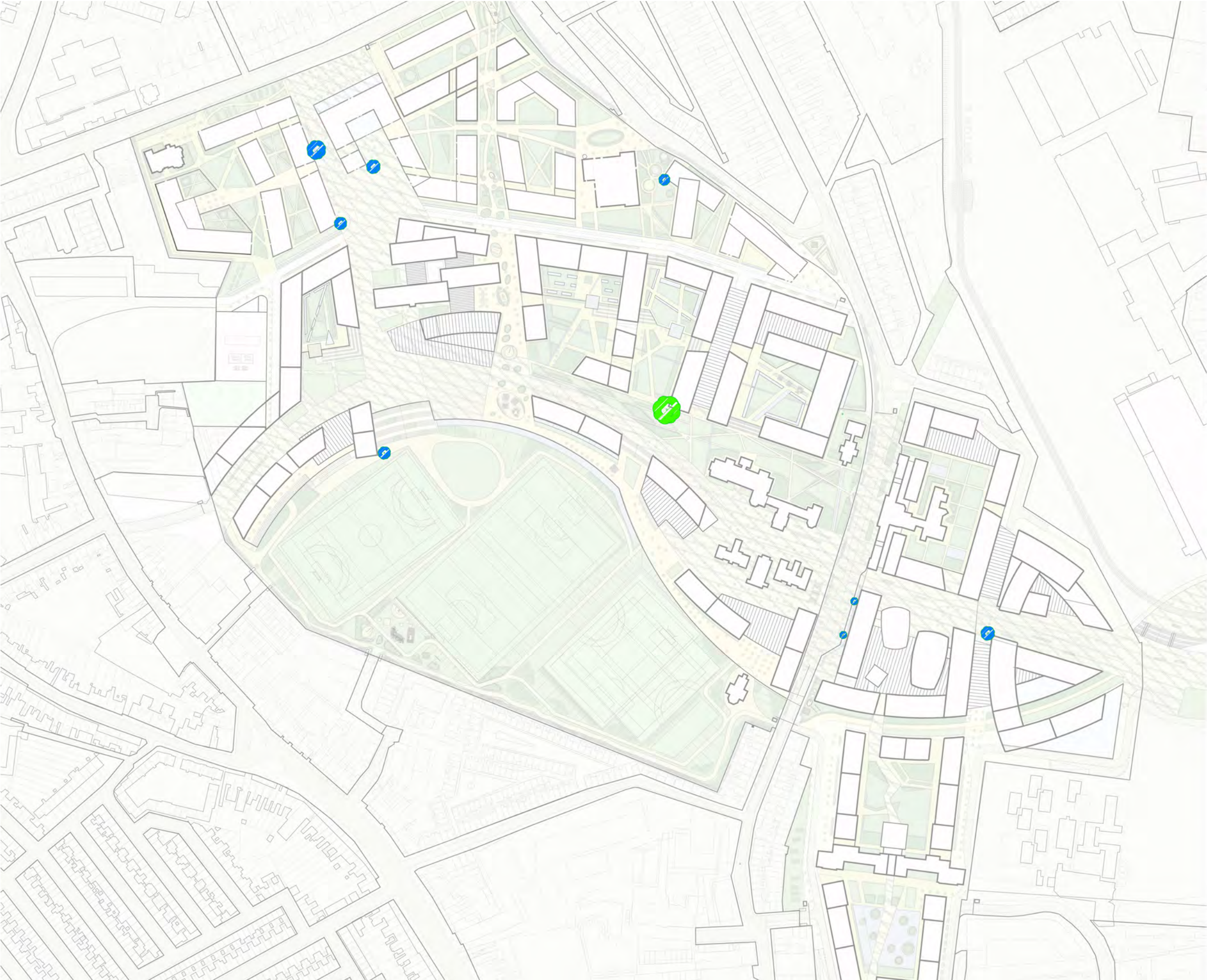
-  CAT A trees 42
-  CAT B trees 158
-  CAT C trees 103
-  CAT R trees 54

on basis of:

MITCHELL + ASSOCIATES Landscape Architecture Architecture Urban Design				
CLIENT GRANGEGORMAN DEVELOPMENT AUTHORITY	PROJECT GRANGEGORMAN	JOB NO. TOR0001		
DRAWING Tree Survey Drawing	DATE 25.06.08	SCALE 1:1000 @ A1	DRAWING NO. 101	
NOTES Do not scale. Use Figure Dimensions Only. Not for Construction. Figures are for Guidance Only. © THIS DRAWING IS COPYRIGHT OF MITCHELL + ASSOCIATES	DRAWN BY JAMES BOND	JB	REVISION A	
STATUS: INFORMATION				

- TREE CONDITION CATEGORIES**
-  A TREES OF HIGH VALUE AND QUALITY
 -  B TREES OF MODERATE VALUE AND QUALITY
 -  C TREES OF LOW QUALITY AND VALUE
 -  RTREES OF VERY LOW VALUE WHICH SHOULD BE REMOVED FOR REASONS OF SOUND ARBORICULTURAL MANAGEMENT
 -  SHRUBS (some but not all included in previous survey)
- Note**
Drawing to be interpreted with reference to tree survey document





L7 treesurvey - endangered trees

CAT A trees 1

CAT B trees 8

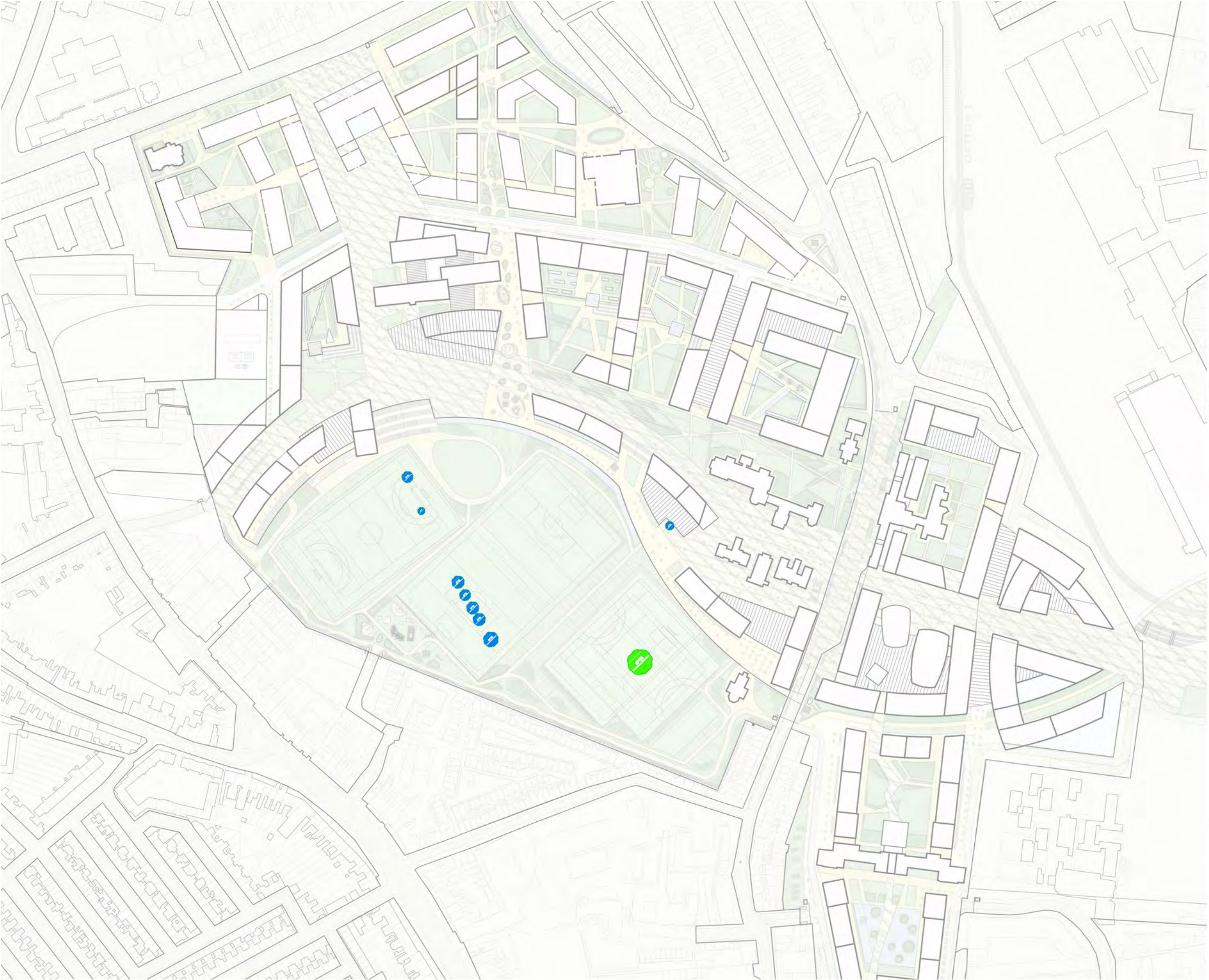
on basis of:

MITCHELL + ASSOCIATES Landscape Architecture Architecture Urban Design <small>Family Court, Family Law, Dispute Resolution + 202 4 934 9000 + 202 4 934 9000 m.100@mitmcc.com.au</small>				
CLIENT GRANGE GORMAN DEVELOPMENT AUTHORITY	PROJECT GRANGE GORMAN		JOB NO 109A001	
NOTES <small>Do Not Scale Use Pictorial Dimensions Only Not For Construction For Planning and Informational Purposes Only © THIS DRAWING IS COPYRIGHT OF MITCHELL + ASSOCIATES</small>	DRAWING Tree Survey Drawing	DATE 26-06-08	SCALE 1:1000 @ A1	DRAWING NO 101
	DRAWN BY James Brady	JB JTB/ALS		REVISION A
	STATUS INFORMATION			

TREE CONDITION CATEGORIES

- A** TREES OF HIGH VALUE AND QUALITY
- B** TREES OF MODERATE VALUE AND QUALITY
- C** TREES OF LOW QUALITY AND VALUE
- R** TREES OF VERY LOW VALUE WHICH SHOULD BE REMOVED FOR REASONS OF SOUND ARBORICULTURAL MANAGEMENT
- S** SHRUBS (some but not all included in previous survey)

Note
Drawing to be interpreted with reference to tree survey document








L7 treesurvey - relocation of trees to be considered

-  CAT A trees 1
-  CAT B trees 8

on basis of:

MITCHELL + ASSOCIATES			
Landscape Architecture Architecture Urban Design		Family Court, Family Law, Courts & Justice 1 + 321 162 5588 1 + 321 1 424 5588 m@grangegorman.ie	
CLIENT GRANGEGORMAN DEVELOPMENT AUTHORITY	PROJECT GRANGEGORMAN	JOB NO. TOR001	
NOTES Do Not Scale. Use Pinned Dimensions Only. Not for Construction. Features shown graphically named. © THIS DRAWING IS COPYRIGHT OF MITCHELL + ASSOCIATES	DRAWING: Tree Survey Drawing	DATE: 20-05-08	SCALE: 1:1000 @ A1
	DRAWN BY: James Smith	JOB 2017-05-15	DRAWING NO. 101
	STATUS: INFORMATION		
		REVISION A	

- TREE CONDITION CATEGORIES**
-  **A** TREES OF HIGH VALUE AND QUALITY
 -  **B** TREES OF MODERATE VALUE AND QUALITY
 -  **C** TREES OF LOW QUALITY AND VALUE
 -  **R** TREES OF VERY LOW VALUE WHICH SHOULD BE REMOVED FOR REASONS OF SOUND ARBORICULTURAL MANAGEMENT
 -  **S** SHRUBS (some but not all included in previous survey)

Note
Drawing to be interpreted with reference to tree survey document







Planting Concept

The main objective is to retain as many existing good quality trees as possible and to integrate them in the new urban development.

The new tree concept involves planting about 2,000 new trees. According to the spatial requirements of the different areas, there will be different characteristics in the planting concept.

In the south, at the park boundary, large park trees are characteristic. In addition to the wind protection, the biological diversity is strengthened with this type. Typical features of a forest plants society will be achieved here:

A field layer contains shade loving flowers, e.g.: Anemone sylvestris, Allium ursinum, Hepatica nobilis...

A shrub layer contains, e.g.: Ilex aquifolium (Holly), Corylus avellana (Hazels), Euonymus europaea, Lonicera periclymenum (Honeysuckles) et cetera

A tree layer contains native plants, e.g.: Fagus sylvatica (Beech), Quercus robur (Oak), Fraxinus excelsior (Ash).

An additional layer for wind protection contains e.g.: Prunus spinosa, Carpinus betulus (Hornbeam), Sorbus aucuparia (Mountain Ash)...

the fields - native species





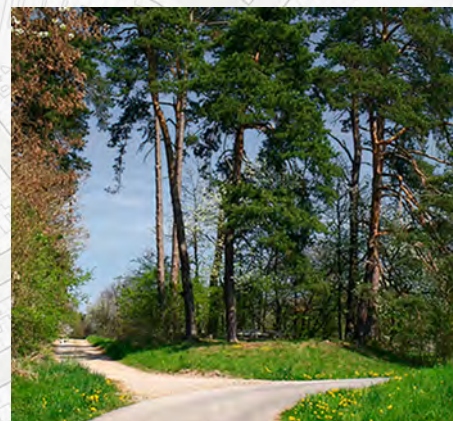
Emotional green

The concept of “Emotional Green” serves as a green backbone for the district. Conspicuous trees (colour, fragrance, flower, fruit) combine the semi-public DIT courtyards with St. Brendan’s Way. This green, public boulevard area can contain the following trees and planting materials:

- Prunus avium* (Cherry), *Prunus cerasifera* (Plum),
Fraxinus ornus (Ash), *Magnolia soulangiana*
(Magnolia) , *Tilia cordata* (Lime), *Ilex aquifolium*
(Holly)...

emotional green - conspicuous trees, colour, fragrance, flower, fruit.







Cultural green

“Cultural Green” is achieved by a combination of native and non-native plants. The aim is that under future conditions due to climate change, new planting societies will be established. Many non-native plants are important feeding plants for different animal species.

The changing life conditions for plants, especially in urban areas (drought, moisture, frost, winds) can be documented by DIT.

- Betula pendula (Birch), Betula pubescens (Birch),*
- Buddleja (Butterfly bush), Crataegus monogyna (Hawthorn),*
- Lonicera (Honeysuckle), Sorbus aucuparia (Mountain Ash),*
- Prunus avium (Cherry), Eleagnus angustifolia, Ilex aquifolium (Holly),*
- Pyrus communis (Pear)*

cultural green - native and non-native vegetation in consideration to climate change.







Courtyards

Courtyards will comprise modern and formal garden design respecting the adjacent building uses. Plantings will include:

Acer rubrum (Maple), *Betula utilis*, *Cercidiphyllum japonicum*, *Malus* 'John Downie', *Cornus*, *Gleditsia triacanthos* 'Sunburst', *Liquidamber styraciflua*, *Prunus avium* (Cherry), *Prunus avium* 'Plena', *Fraxinus ornus*, *Malus floribunda* (Apple)...

courtyards - modern and formal garden design with regard to the specific requirements.





