

An aerial photograph of a city, likely Dublin, showing a dense urban landscape with numerous residential and commercial buildings. In the center of the image, there is a large, prominent green sports field, possibly a Gaelic football pitch, surrounded by trees and some smaller structures. The field is a bright green color, contrasting with the surrounding urban environment. The text "GDA CONSULTATIVE GROUP – 21ST JUNE 2018" is overlaid on the image in a semi-transparent white box.

GDA CONSULTATIVE GROUP – 21ST JUNE 2018

Ronan Doyle
Grangegorman Development Agency

OVERVIEW



Grangegorman
Development Agency
Gníomhaireacht Forbartha
Ghráinseach Ghormáin

Update

- Health
- DIT
- Other Projects
- Communications
- Public Art



PRIMARY CARE CENTRE

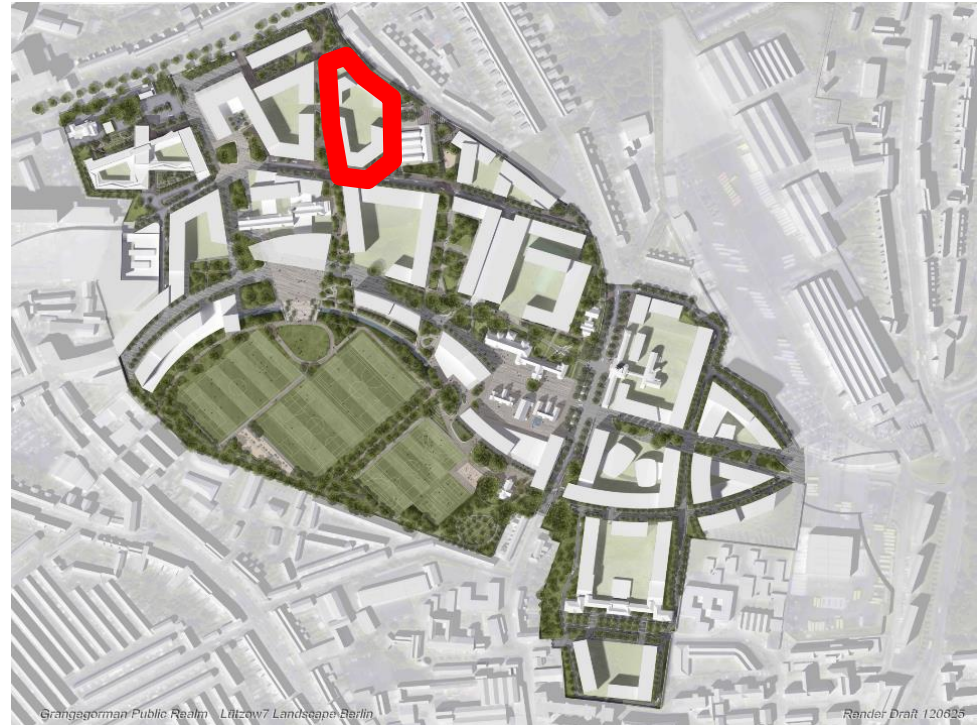


- Centre is now open and operational.
- GP service moved in in May



RESIDENTIAL CARE NEIGHBOURHOOD

- Design team has been appointed
- Currently in Alcatel period



CENTRAL AND EAST QUADS



Grangegorman
Development Agency
Gníomhaireacht Forbartha
Ghráinseach Ghormáin

- Piling ongoing
- Site set up nearly complete
- Two cranes onsite, one on each site
- Material being removed from the site

East Quad



Central Quad

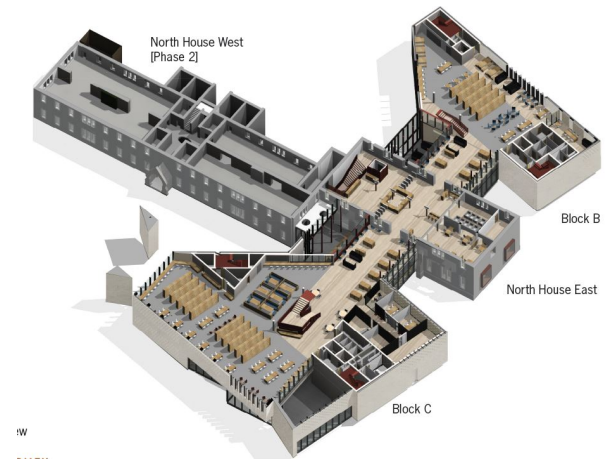


DIT PROGRAMME 3 PROGRESS



Academic Hub

West Quad



Energy Centre



PRIMARY SCHOOL D7ETNS



Planning decision expected shortly for school building

Planning permission granted for alterations to junction on 20th June 2018.



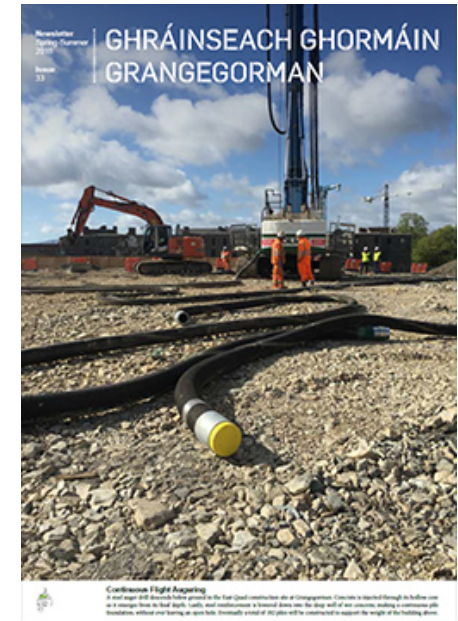
Ongoing Communications

- Summer newsletter published
- GDA is currently developing a hoarding strategy for the site
- PPPs launched by three Ministers on 30th April

Meetings

Community Liaison Committee meeting took place on Wednesday 16th May 2018

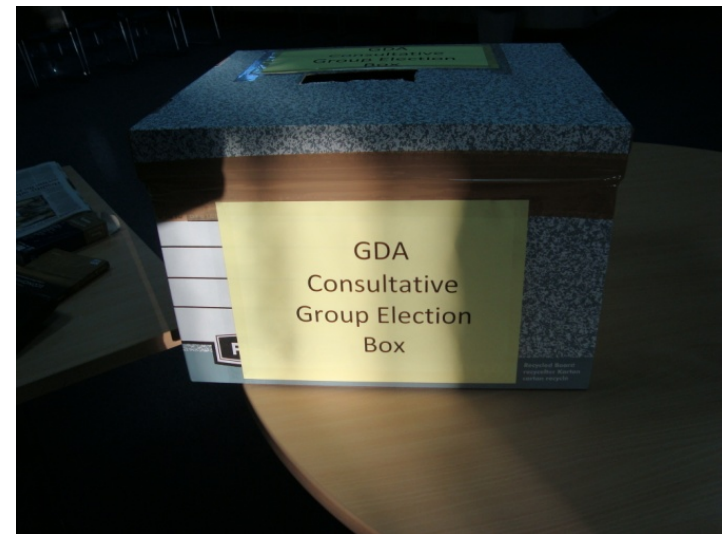
- Discussion around communications for the PPPs.
- Increase in anti-social behaviour on campus



ELECTIONS FOR BOARD AND CONSULTATIVE GROUP



- 19th June** – Call for groups to register
22 days
- 13th July** – Closing Date for receipt of registration
10 days
- 23rd July** – List of new Registered Groups is published
4 days
- 31st July** - Start date of call for nominations
8 days
- 8th August** – Closing date of call for nominations
- 9th August** – Verification of Nominees
1 day
- 10th August** – List of Nominees is published
20 days
- 30th August** – Election Meeting
1 Day
- 31st August** – GDA Chief Executive informs Minister



GRANGEGORMAN LABOUR AND LEARNING FORUM



Grangegorman
Development Agency
Gníomhaireacht Forbartha
Ghráinseach Ghormáin

Interested in Apprenticeships?

Like to find out more about what's on offer and to talk to hiring employers?

Then drop into our Apprenticeship Information Morning

Wednesday 27th June 2018 from 9am to 1pm

Rathdown House, DIT Grangegorman Campus

Free refreshments and advice on CVs/job applications

For further details, contact Kathleen McCann 01 402 4262/ 087 739 1602
kathleen.mccann@ggda.ie

All welcome!



The Grangegorman Business & Enterprise Group
cordially invites you to attend

The Grangegorman Business Breakfast

Supply Chains and Small Businesses
Speakers

Nigel Thompson (Senior Quantity Surveyor, GDA)
Tom Sheridan (Legal Procurement and Contracts Manager, DIT)
Update on Grangegorman Development

Wednesday 18th April 2018, 8am to 9.30am

St. Laurence's, Grangegorman Campus
To register for this free event contact Kathleen McCann
01 4024262/ 087 7391602 kathleen.mccann@ggda.ie



Public Art

- Pre-texts course took place in Grangegorman on 29th-31st May. Very positive feedback
- Final round of Pathway 2 Projects now underway. 5 projects funded. 17 in total under this pathway.



A low-angle, upward-looking photograph of a ship's deck. In the foreground, there are two large, circular metal structures, likely part of a winch or pulley system, with numerous thick, twisted steel cables or ropes coiled around them. The cables are weathered and show signs of rust. The background is a bright blue sky with scattered white clouds. In the lower right corner, a portion of a white crane with the word "BRANL" in red letters is visible, extending upwards. The overall composition is dynamic, with strong diagonal lines from the cables and the crane.

THANK YOU