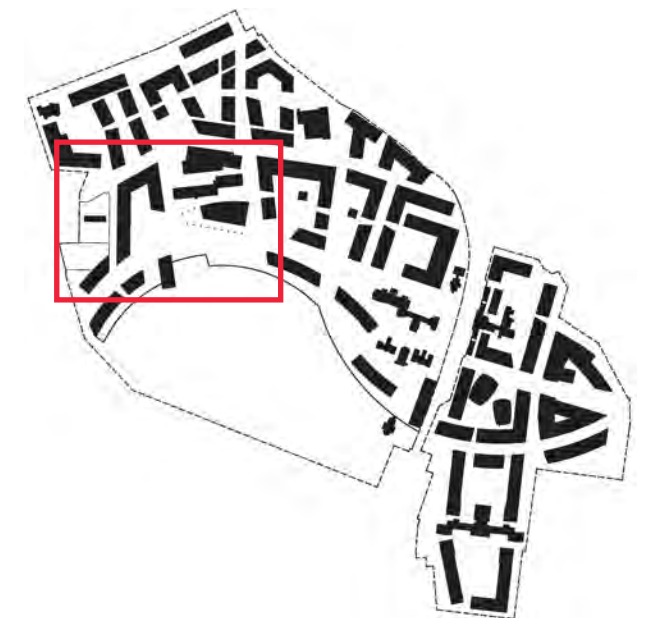


## the business school, DIT library and the upper terrace

The western-most core area of the Grangegorm Quarter has been termed the Academic and Health “heart” of the quarter. It is comprised of the DIT main library, Central Learning Classrooms, and the Upper Terrace to the south.

The Upper Terrace poses a dramatic belvedere looking south across The Fields. The Library's information/study/ resource centre incorporates the historic Top House in a careful three-part composition of atria, courtyards, and new spaces, poised above the open green. The Upper Terrace provides a natural viewing platform for games and daily student life with the grand backdrop of the Dublin skyline and Mountains. From the Upper Terrace down to The Fields, a tiered stairway/ amphitheatre offers a venue for a variety of large-scale events, as well as a social 'sun-catcher' in fair weather and offers access to the sports centre below.



**grangegorman** an urban quarter with an open future



## executive summary

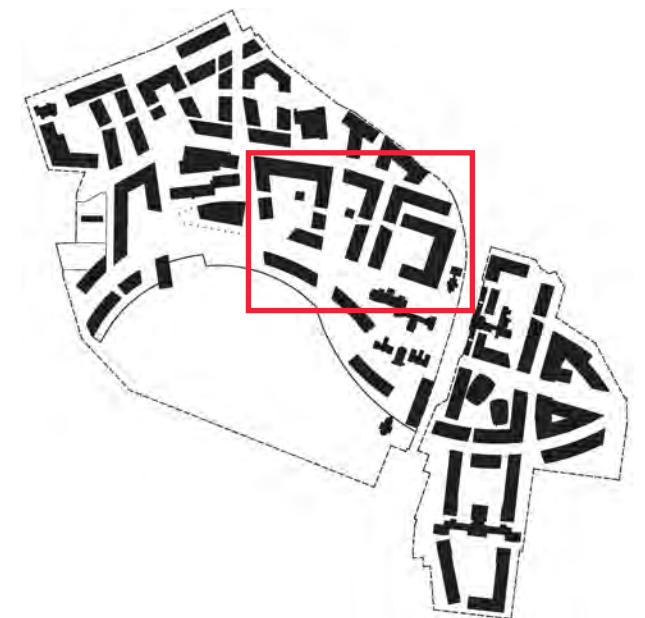


*Pioneer Courthouse Square, Portland Oregon, Williard K. Martin, photo: Jan Gehl*

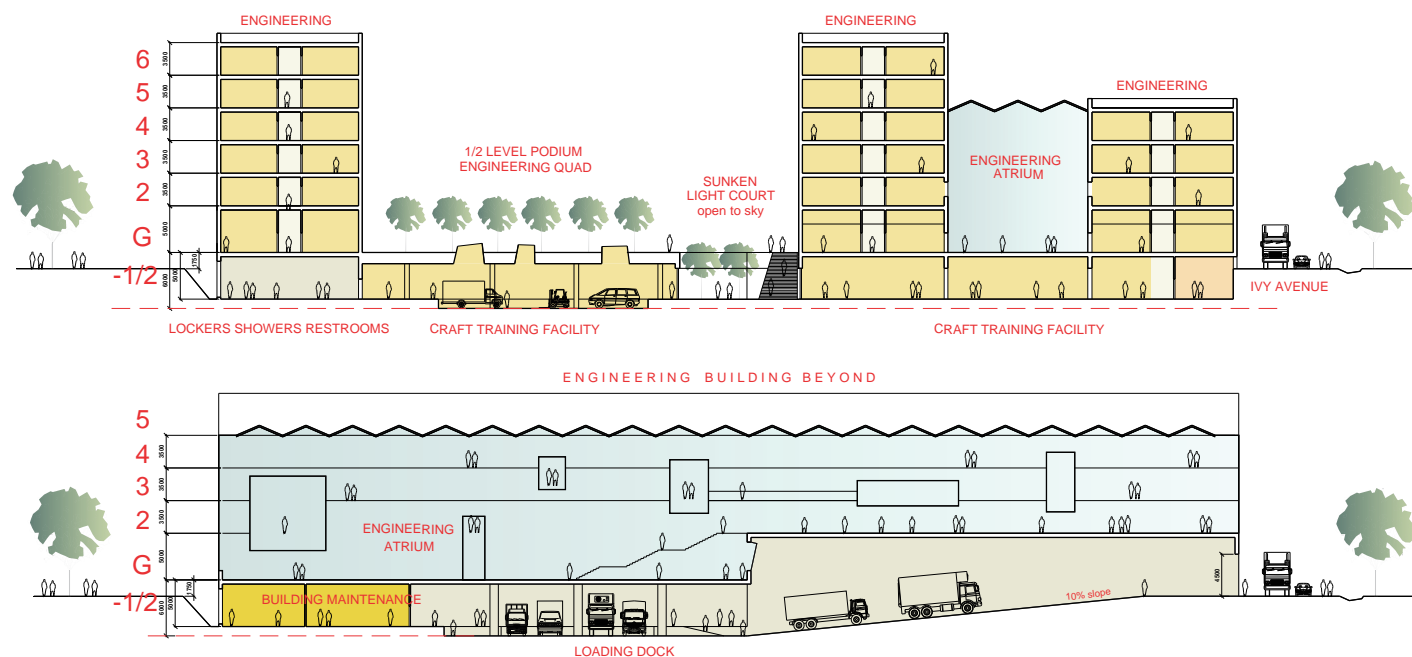




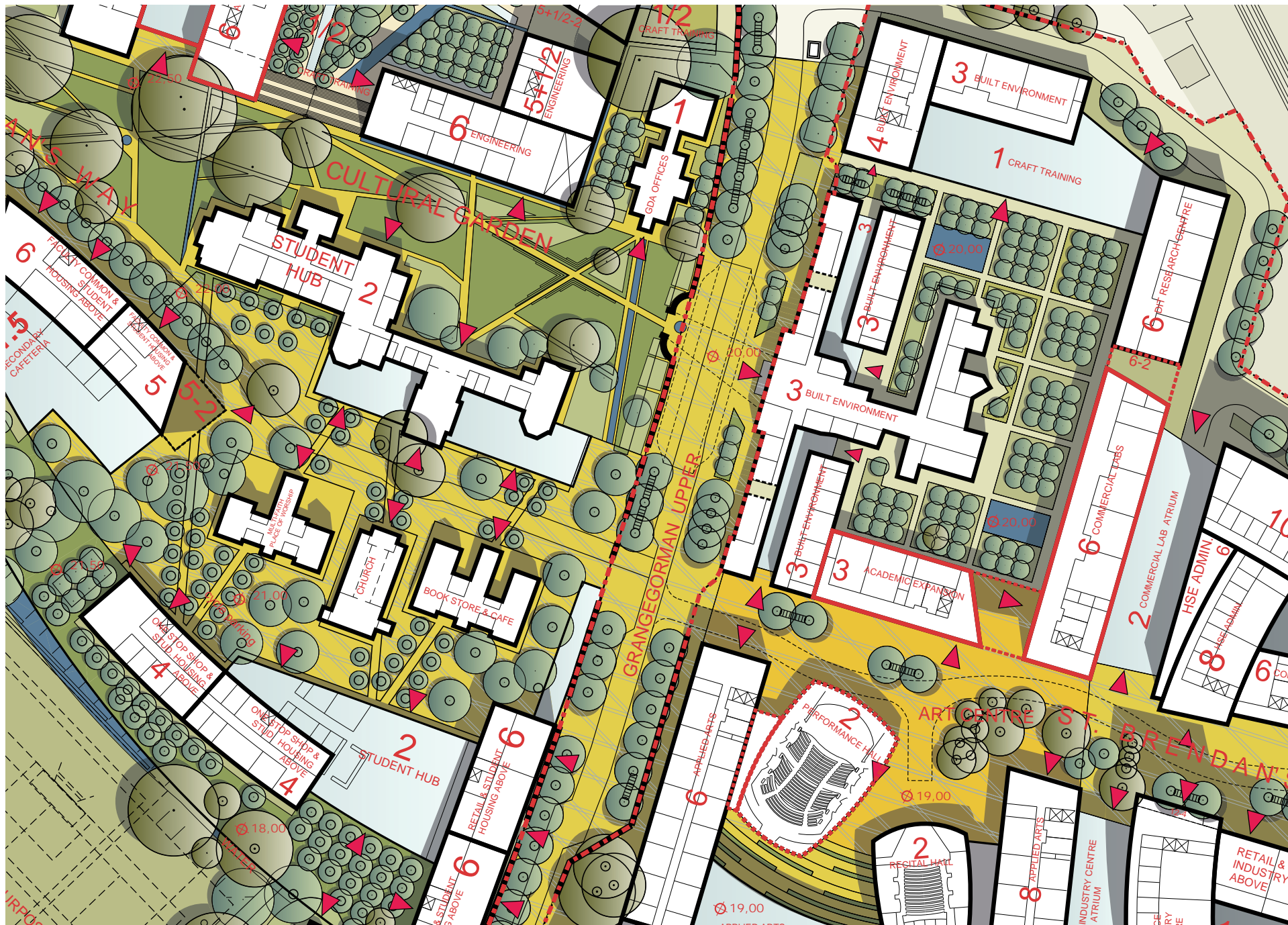
These three academic areas form three separate, similar, but distinctive quadrangles that primarily open to the south providing access to St. Brendan's Way and the Cultural Garden. The south-facing courtyards allow a greater degree of direct sunlight to fall on the outdoor landscaped spaces and support St. Brendan's Way as a primary circulation route through the campus. A north-south oriented atrium space connects the Engineering school to parts of the DIT Research Centre and Commercial Laboratories via a series of bridges.



University of Cincinnati Student Life Center, Moore Ruble Yudell Architects and Planners







The Student Support Services are grouped as a student “hub” and located in a high profile, easily accessible campus location as part of the cultural-social “heart” of the Grangegorman Quarter. St. Brendan’s Way, the major circulation route through the site, passes between the grouping of protected buildings that, in addition to several new facilities, will comprise the majority of Student Support Services. This hub of student services is complemented by various retail shops, restaurants, cafes and DIT cafeterias along St. Brendan’s Way and is located between the Student Housing to the south and the academic departments to the north—a literal and figurative bridge between the two aspects of student life.

The Built Environment department has its own distinctive courtyard and also occupies the Richmond Penitentiary (Clock Tower building) that will be renovated and expanded. The Clock Tower is seen as a major iconic link from the history of the site to the future of the University and has been given the space required to appreciate the landmark by the design of the Cultural Garden directly opposite it. The Cultural Garden is conceived as a place of reconciliation, celebration and commemoration of the new and protected buildings as well as the past and future uses—a means of marking a significant process of transformation.







1. view of cultural garden  
looking southeast

The Cultural Garden is an axial space that looks toward the Clock Tower providing an uninterrupted view of this protected structure, and flanks other protected buildings that will be adapted to student social activities.



2. view of cultural garden  
looking northeast

The Cultural Garden is conceived as a place of reconciliation, celebration and commemoration of the new and protected buildings as well as the past and future uses—a means of marking a significant process of transformation.







1. view of grangegorman road looking south

Grangegorman Road currently bisects the site. The character of the portion of road through the site will be altered using traffic calming and shared surface concepts to provide a pedestrian dominant space that knits together the two portions of the site.

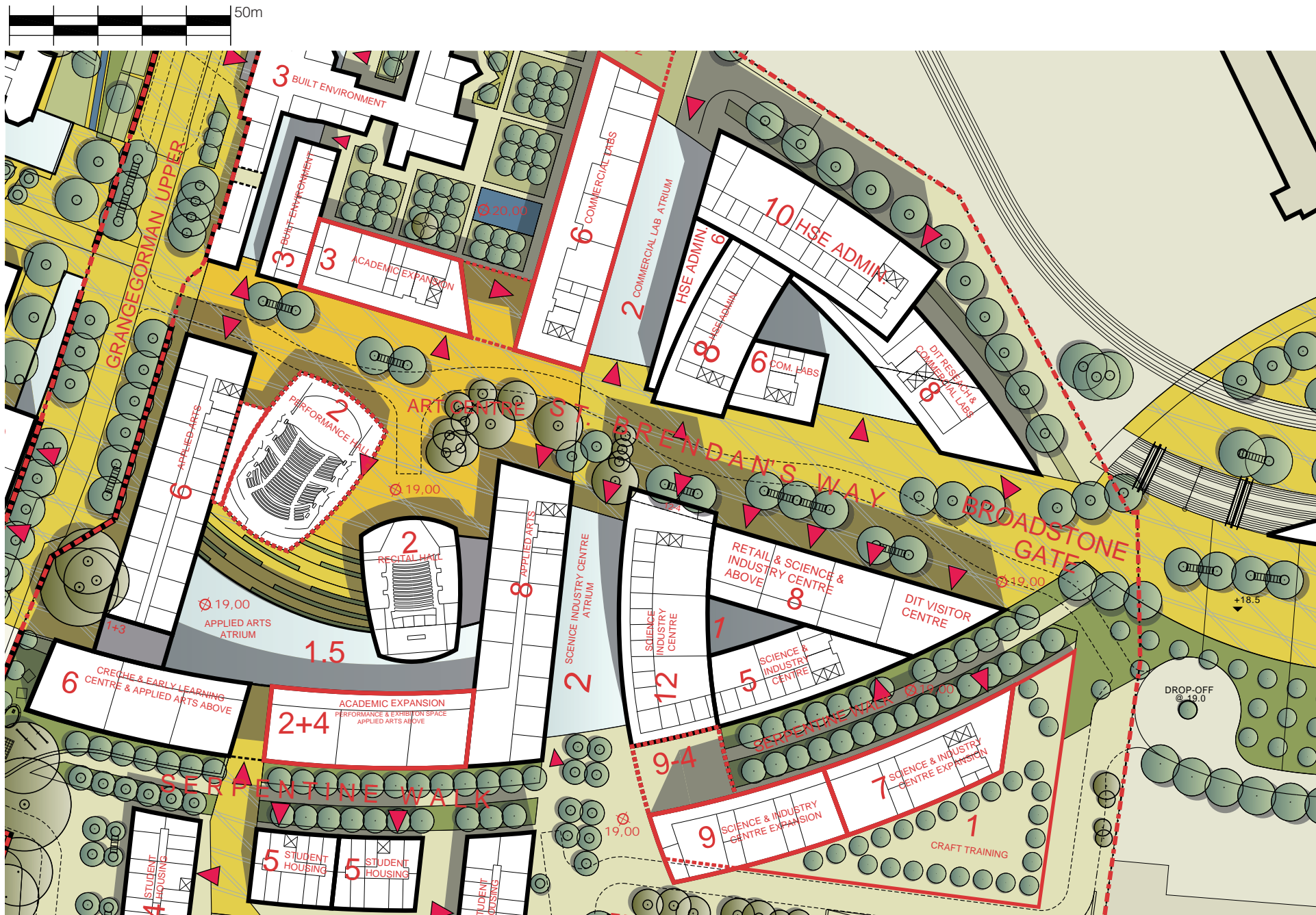


2. view of grangegorman road looking north

The portion of Grangegorman Road through the site will be treated with a different materiality than the rest of the road relating more to the character of St. Brendan's Way than a city street. The existing protected stone wall will be substantially retained but may be altered in some places to create more open and inviting spaces.



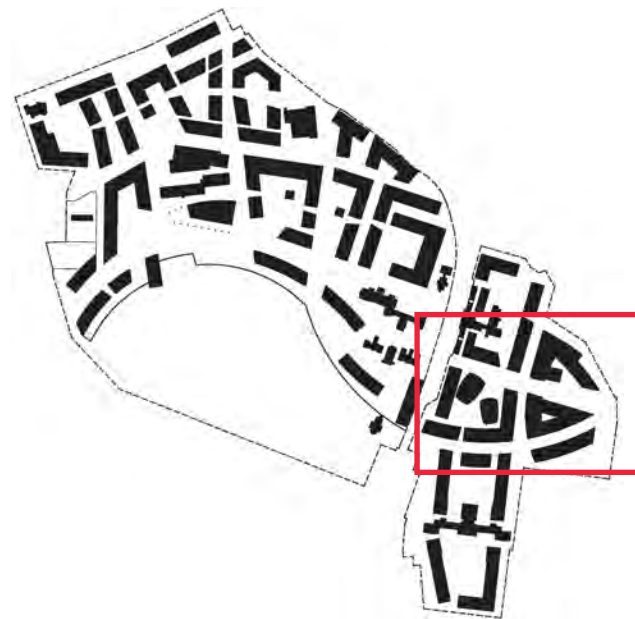




## the faculty of applied arts and the arts centre

The facilities dedicated to the Faculty of Applied Arts (FoAA), including the proposed Arts Centre, comprise the second half of the cultural-social “heart” of the Grangegorman quarter. The Arts Centre is envisioned to be a showplace for the artistic creations of the music, drama, art, design and media departments of the Institute and a destination venue for the community and the city of Dublin. The quadrangle dedicated to the Applied Arts department is dominated by a recital hall, a future performance venue and an art gallery—all partially contained within a glazed atrium wintergarden space.

In addition to opening northward to the pedestrian traffic on St. Brendan’s Way, the location for the arts centre was chosen due to its public access and prominence near the Broadstone Gate with its access to the proposed LUAS light rail line, taxis and bus routes. The Applied Arts quad is also accessed from Grangegorman Road and a drop-off for the creche is provided and underground parking garage is located below grade.



University of Maryland Center for the Performing Arts, Moore Ruble Yudell Architects and Planners



University of Cincinnati Student Life Center, Moore Ruble Yudell Architects and Planners

