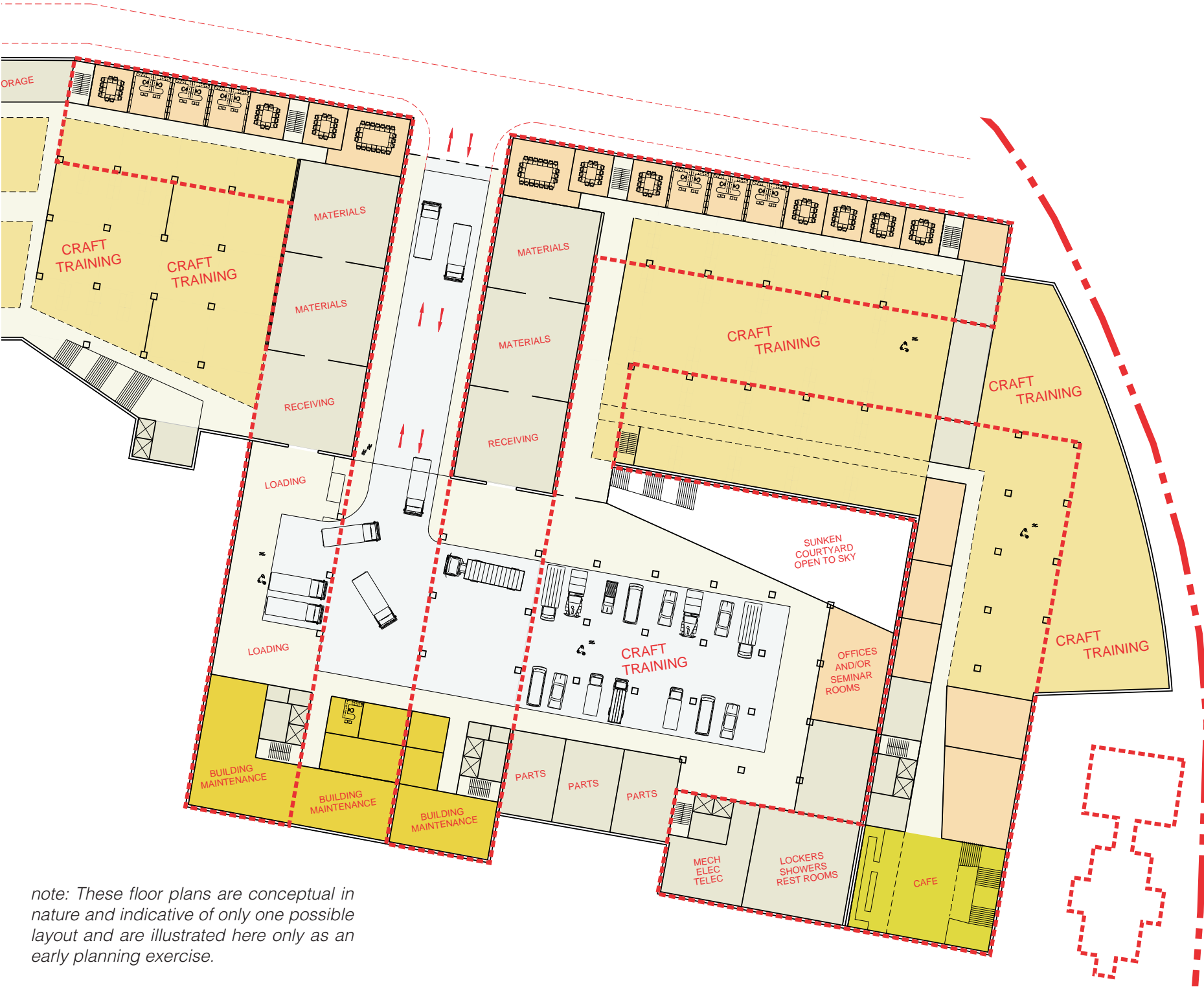


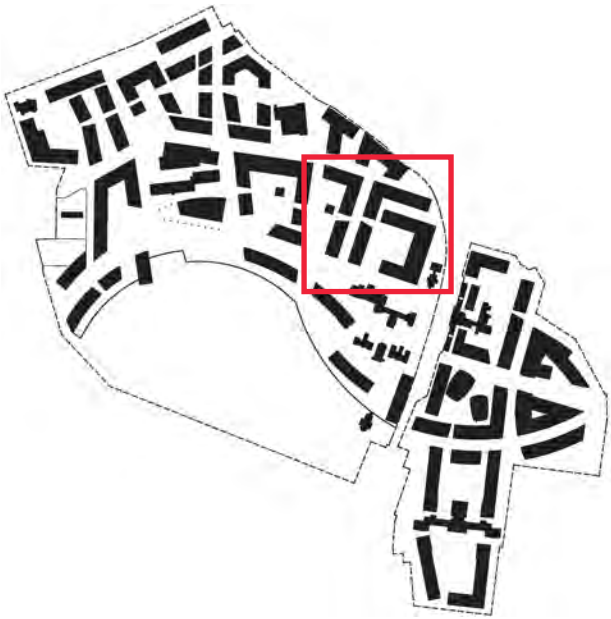
main apprenticeship training facilities

The Institute has a major involvement in and commitment to apprenticeship education and training and the relocation of the Institute provides the opportunity to locate much of these facilities closer to each other as well as near other DIT programs and students. A large portion of the facilities have been placed at the centrally located Engineering quad.

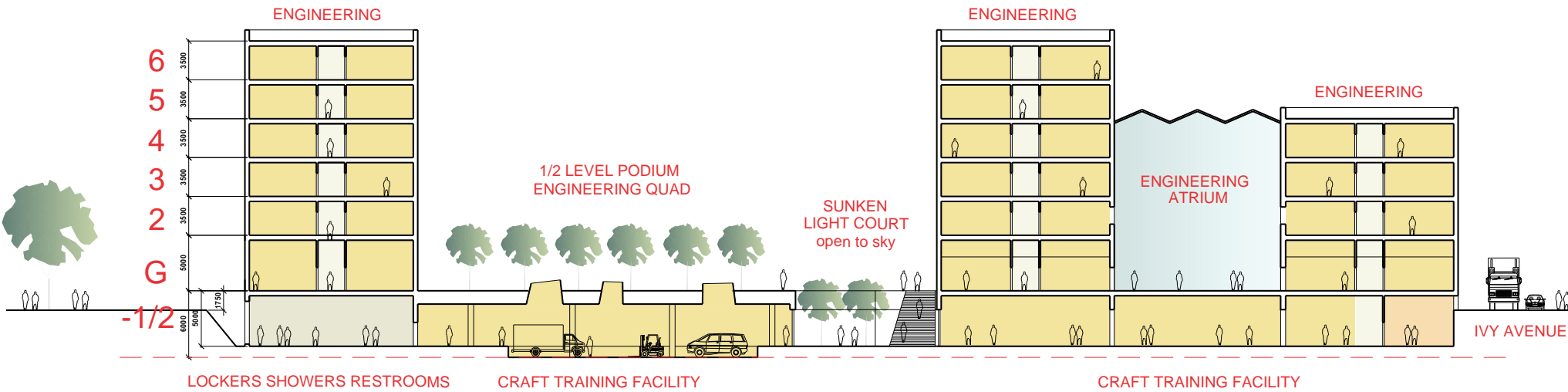
Due to large space requirements and heavy equipment, some of the Apprenticeship Training facilities have been located partially below grade similar to the Central Learning facilities, and employ similar means of acquiring daylight into all habitable spaces. Classrooms, seminar rooms and offices are located to the periphery to take advantage of the half-level podium above grade and the pulling away of the below grade space to allow additional light to enter the spaces. A key objective was to co-locate craft training facilities with undergraduate and graduate activities where possible. Areas with large floor areas such as workshops and maintenance bays are daylit by various skylight techniques and by incorporating daylight from the open-sided, south-facing glazed podium wall. In addition, daylight is supplied from a large sunken landscaped courtyard.



note: These floor plans are conceptual in nature and indicative of only one possible layout and are illustrated here only as an early planning exercise.



Pulling away the ground to allow light to enter lower levels.

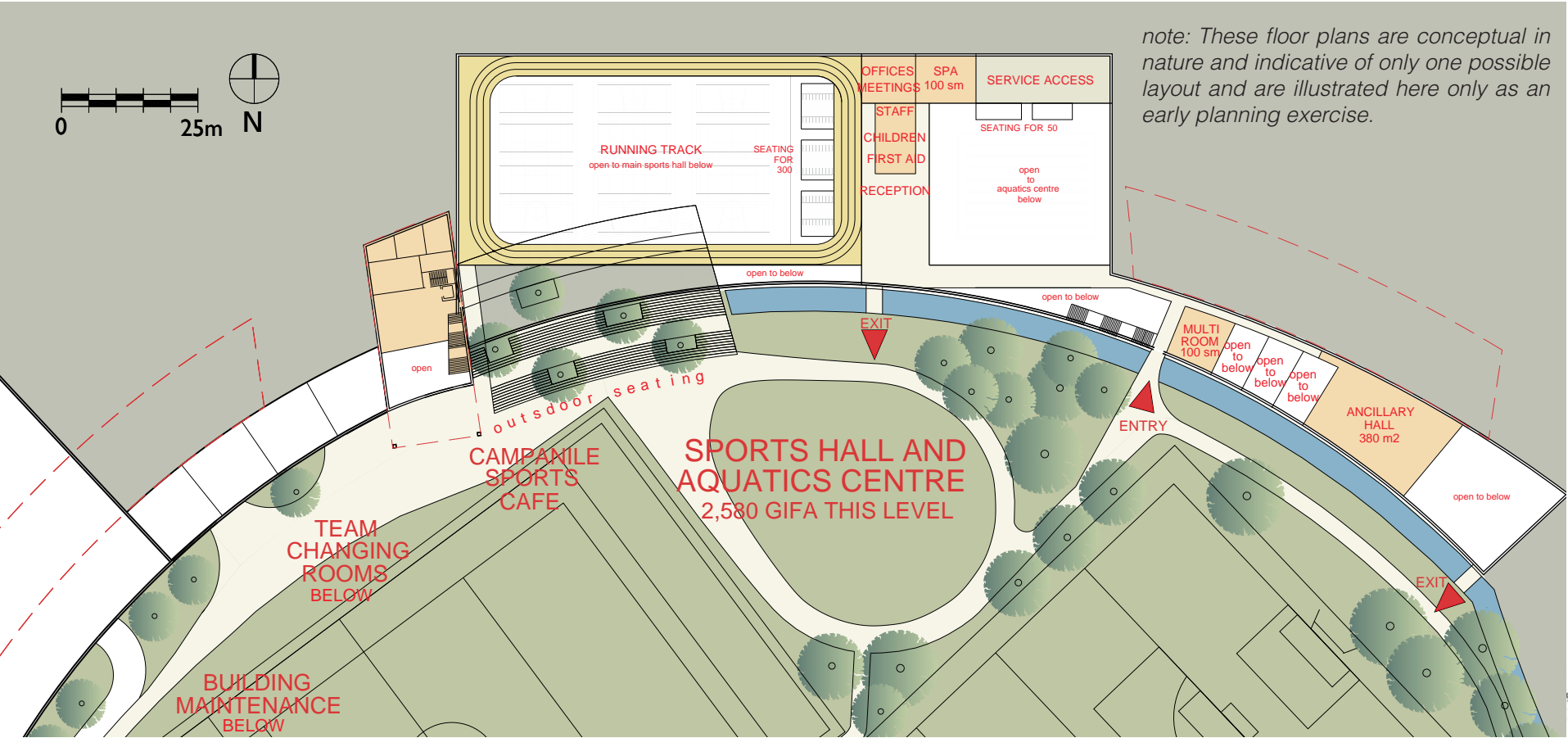


Daylight enters lower level from sunken courtyard and skylights.

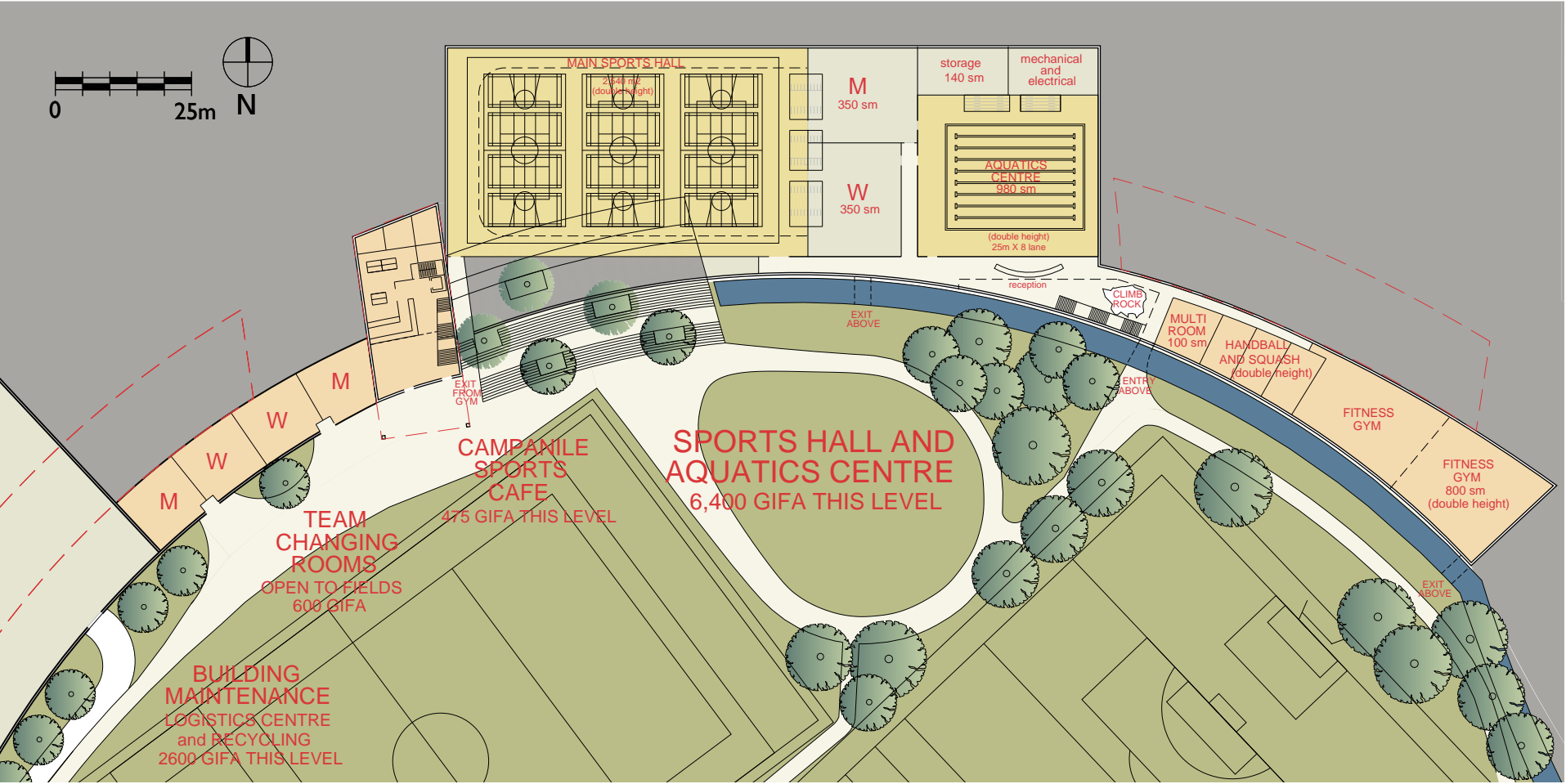
sports hall and aquatics centre

As with other DIT programs, the relocation of the sports program to the new site will enhance the student experience allowing students with varying educational focuses to mix with the greater college community, make friends and improve the social infrastructure of the Institute. The Sports Centre will also accommodate educational space for leisure related programs of DIT. In addition, by being open to the public, the Sports Centre will provide a place of interaction with the other users of the Grangegorman Quarter such as the Health Service Executive and Primary School as well as the local community.

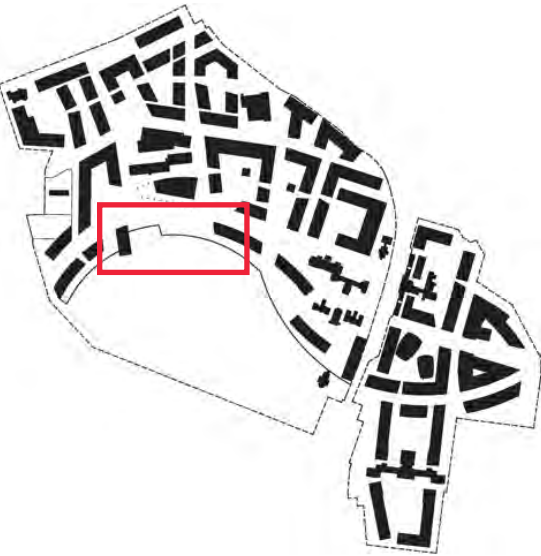
The two-level Sports Centre has been located in a high-profile and unique location between the outdoor playfields and the academic and health “heart” of the Quarter. Most pedestrian paths through the Quarter arrive at or pass by the Upper Terrace and the Sports Centre below. Most of the programmatic spaces face directly out to the Fields and are daylit by a south-facing glazed wall revealed by a “ha-ha” (an angled, sloped landscaped change in ground elevation). In addition to regular Sports Centre changing facilities located in the building, there are team changing facilities near the Sports Centre that are directly accessible from the playing fields.



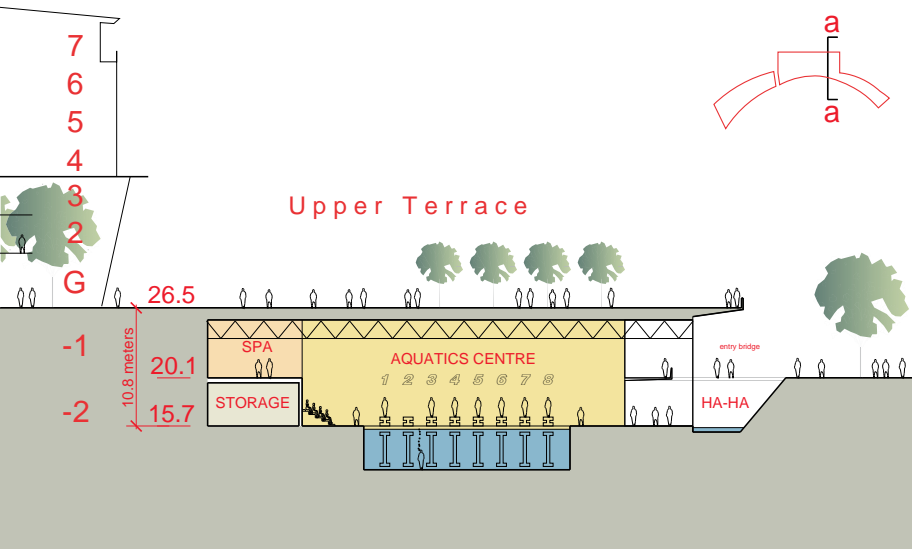
1. sports hall and aquatics centre upper level plan



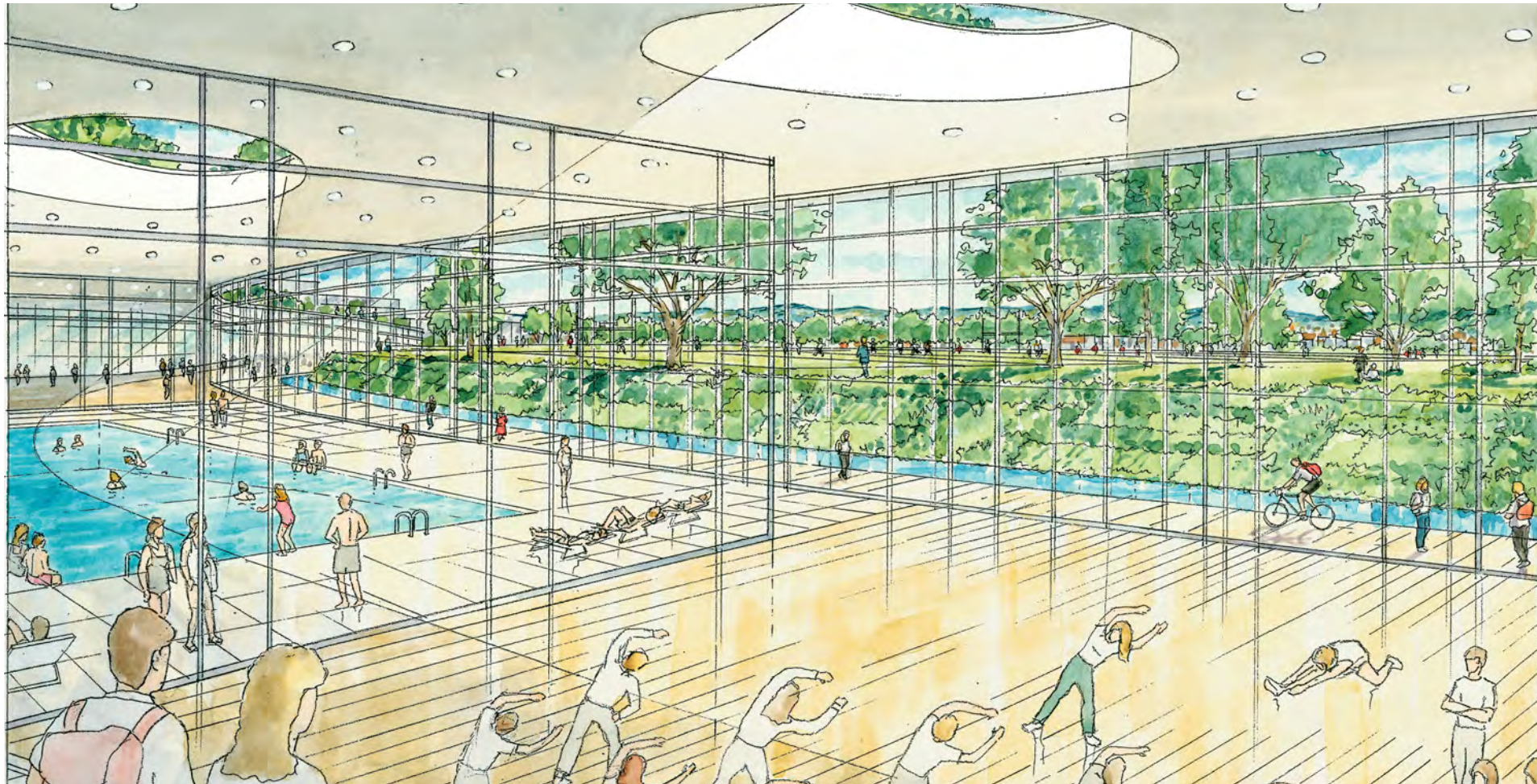
2. sports hall and aquatics centre lower level plan



View of a traditional ha-ha.

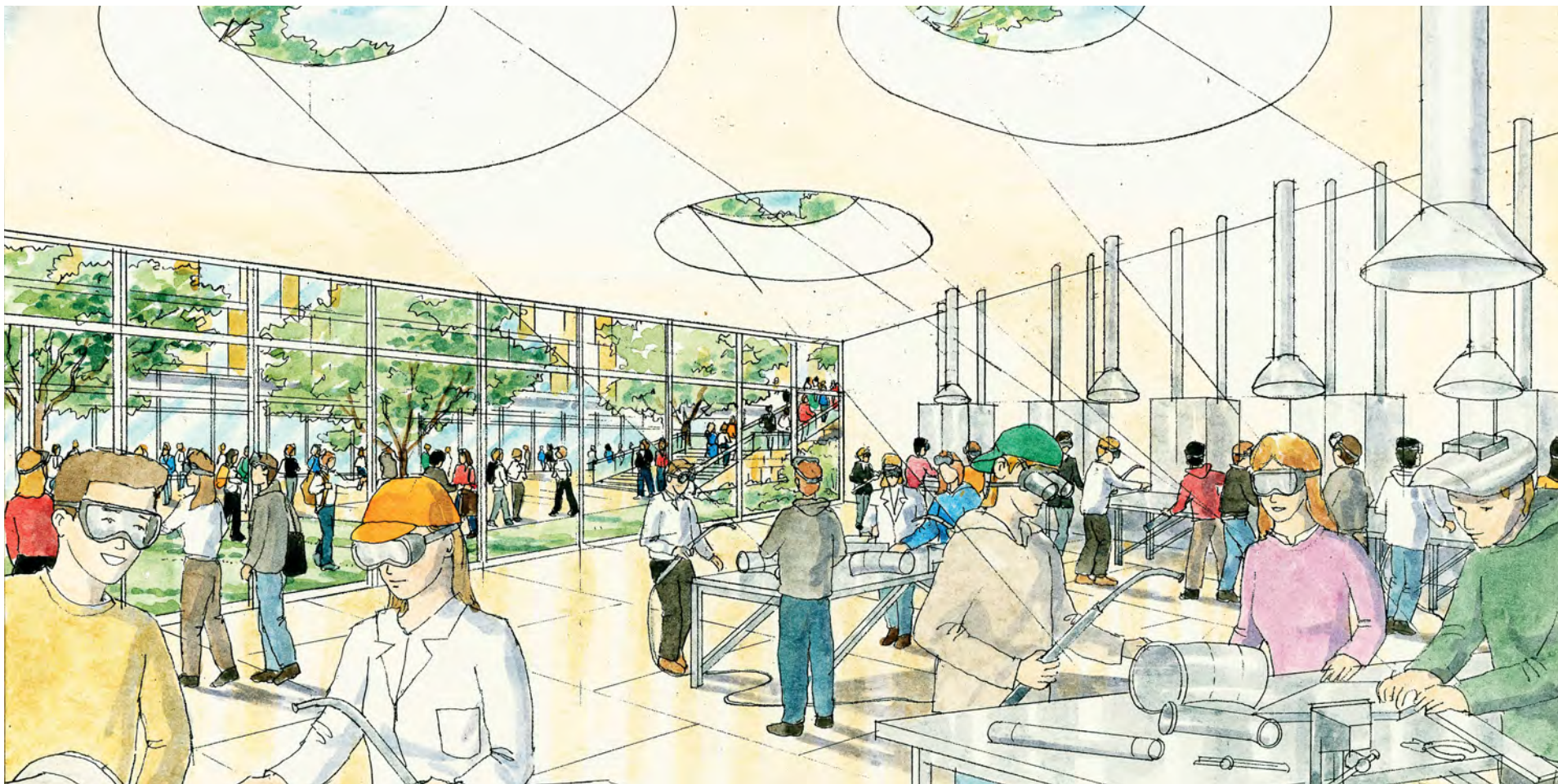


3. section through aquatics centre



1. view of daylit sports centre and ha-ha

The Sports Centre will be daylit by overhead skylights and by using glass walls adjacent to a landscaped "ha-ha" (an angled sloping change in ground elevation).



2. view of daylit craft training area with courtyard

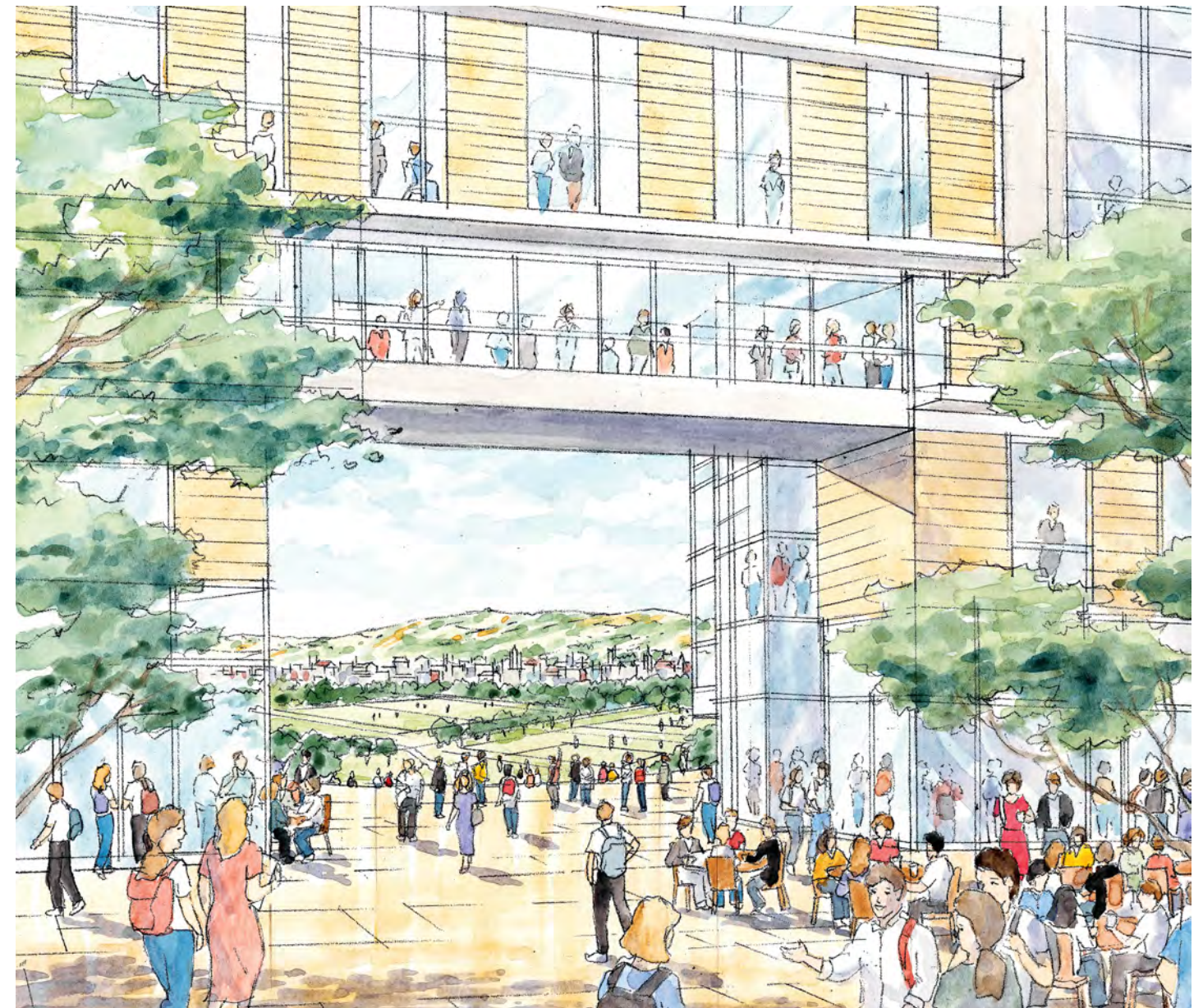
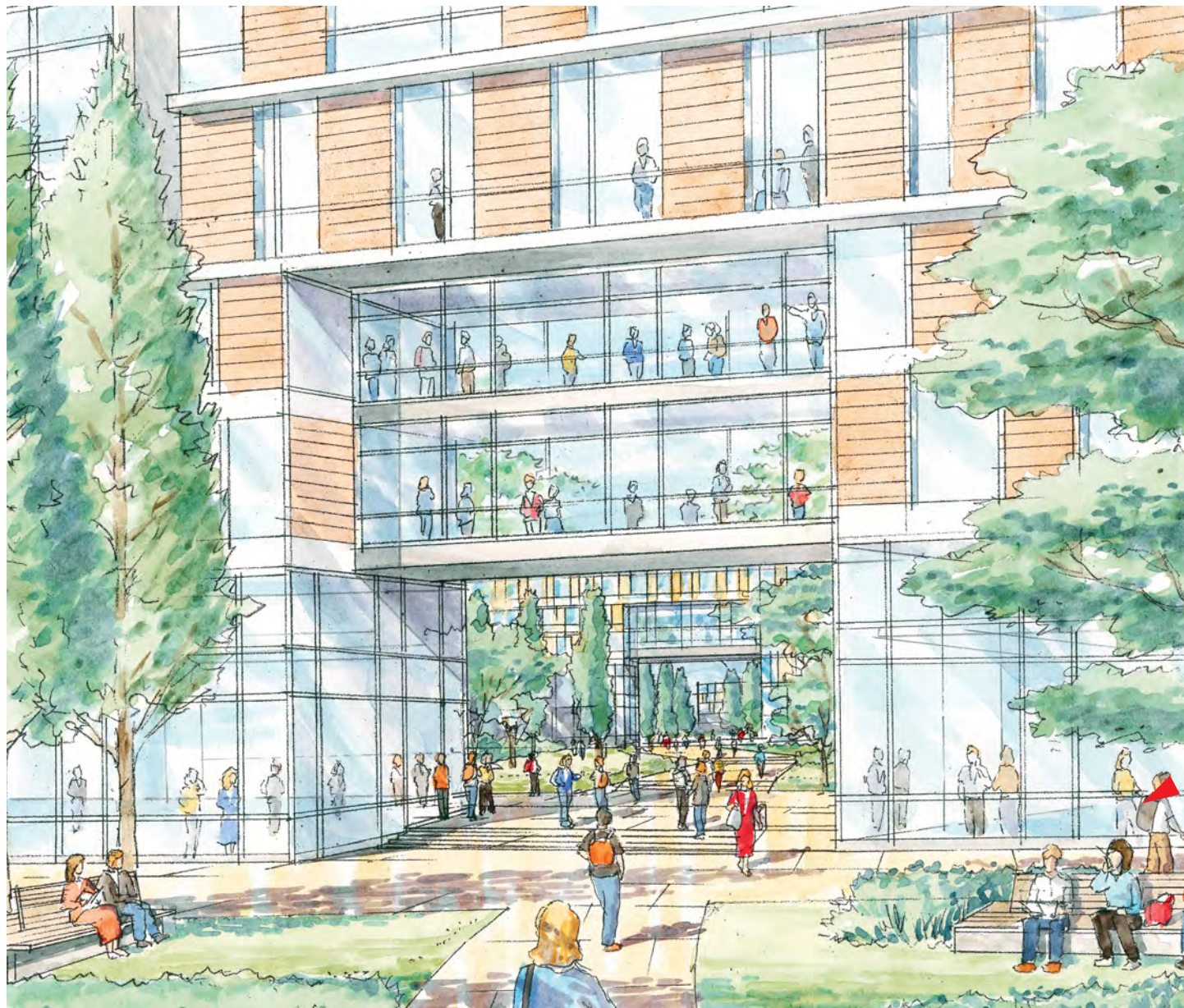
The Craft Training Facilities will be located partially underground due to the large floor areas required and the weight of heavy machinery. These spaces will be daylit through a number of ways including overhead skylights and sunken landscaped courtyards.





1. view of the campanile, library and upper terrace

A grand staircase from the Upper Terrace provides south-facing places to sit, study, meet friends and watch the sporting events on the Fields. The Campanile creates an iconic marker for the University as well as allows public viewing spaces above and cafes and eateries accessible from the Fields below.



1. gateway through academic building

Connective passageways serve to link between different quads. Passageways also connect the variety of open spaces offered within the Quarter, including individual gardens as well as major open spaces. The consistent use of specific trees and plantings along these passageways, as well as the use of particular paving and lighting standards, add to the collective district image, and visually enhance connectivity throughout the Quarter.



2. gateway through student housing building

Along St. Brendan's Way, openings are created to maximise daylight and to frame views south overlooking the Fields and to the mountains beyond.

