

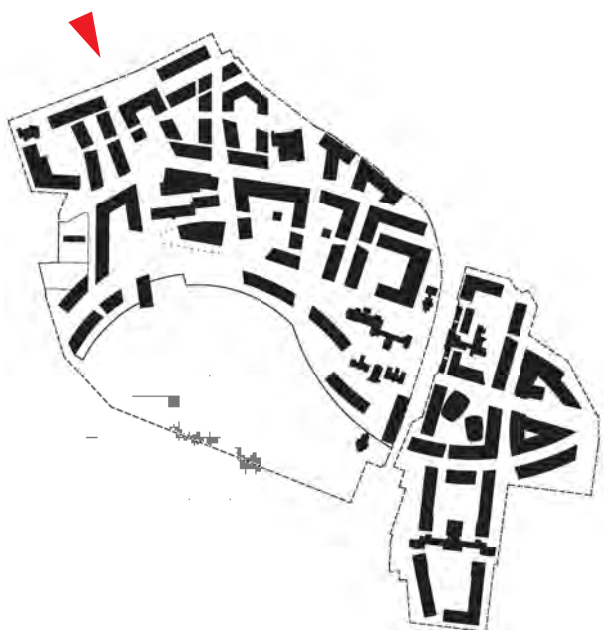
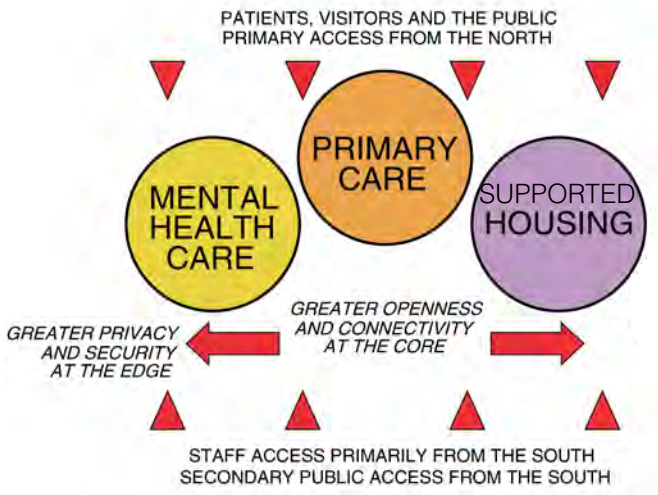
04_masterplan details





1. view of the HSE from north circular road

One of the Key Principles of the Masterplan is the need for a strong connection from the site to North Circular Road. The Primary Care facilities form a central backdrop to an urban plaza accessed from North Circular Road.



the health service executive

The Health Service Executive (HSE) has recognised the tremendous opportunity to address the barriers of isolation, institutionalisation and stigma through the redevelopment of the Grangegorman site and facilities. The Masterplan fully capitalises on this opportunity to create a wonderful new treatment environment with secure, therapeutic, fit-for-purpose facilities that are an integral part of a vibrant mixed-use urban community. The design achieves a less institutionalised environment to create a more comfortable, familiar atmosphere for service users, allow for more interaction between the healthcare facilities and the surrounding community and contribute to the overall quality of life in the Grangegorman Urban Quarter. The Masterplan responds to the challenge of creating a mixed-use healthcare environment on the large scale of Grangegorman by using principles of innovative facility design and creative environmental planning.

Hierarchy of Open Spaces

The HSE component of the Grangegorman Urban Quarter has been designed in consideration of the most current and updated research on healthcare environments and user needs. Whilst it is important to recognise the requirement of providing a safe and therapeutic environment for those who need the security of an institutional environment, many mental healthcare facilities operate cohesively in ordinary neighbourhoods. Many of the facilities operated by the HSE are located within traditional community settings. Other successful mental healthcare environments, integrated with a mix of institutional, residential, commercial and community uses, are being planned and built across Europe and around the world.

A clear hierarchy of open spaces has been established with the following objectives:

- Provide a series of secure, safe “healing gardens” with a range of active, passive and weather-protected recreation spaces, while allowing for a variety of open space sizes and varying degrees of security.
- Promote a safe environment inside and outside, day and night.
- Incorporate a mix of activities and uses that can be shared with the community.
- Promote a well-defined public realm with windows and doors facing the street.
- Avoid having “no-go” areas.
- Provide well-lit streets, walkways and buildings.
- Ensure that front doors face onto public streets to provide “eyes on the street.”
- Ensure logical way-finding.



1. view of library square and primary care from the library

Library Square provides a public space that activates a central portion of the site bringing people together from the HSE buildings, DIT and the public library.



the health service executive

An Innovative and Cohesive Campus for the HSE

The Health Service Executive (HSE) elements of the Grangegorman Masterplan are designed to achieve a number of key principles:

- Integration of the HSE accommodation with the surrounding local community that it primarily serves and with the new DIT community.
- Provision of privacy and dignity for clients or building users of HSE.
- Convenience and effectiveness of operation for HSE staff.
- Achieving a legible and understandable public domain.
- Providing a range of outdoor spaces from secure to completely open, appropriate to the needs of patients and clients.
- Careful gradation of building heights from domestic scale up to medium-rise.

The topology of the site, the permeability of the boundaries, the brief of the HSE, and the adjacency of local communities all contribute to logically locating the majority of HSE accommodation to the north of the site. In turn this locates HSE accommodation near to the new circulation spines of St. Brendan’s Way and Serpentine Walk and within a short walk of the open parkland areas to the south. The HSE administrative and clinical support services offices have been located near the Broadstone end of the site in an appropriately more office-oriented area and easily accessible from the city centre, the new LUAS link and other public transport.

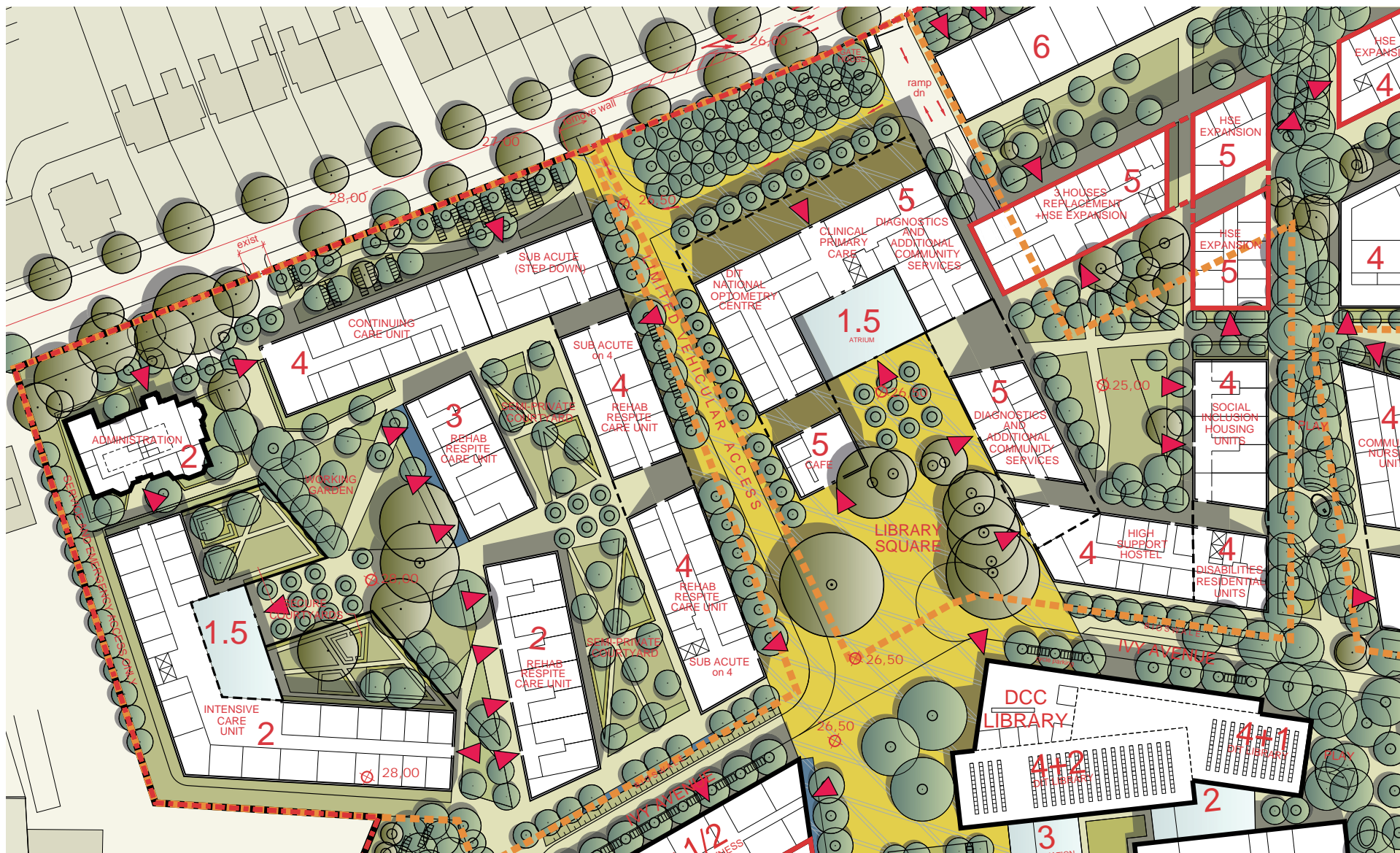
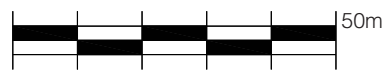
The design diagram lays out a central north-south circulation spine giving direct access to the most public parts of the accommodation. Mirroring the key concepts of the Masterplan, there is both a landscaped and more urban, part-atrium route. These circulation spaces will be public domain. They connect the North Circular Road to Library Square with its café and library, and are near the more public Primary Care facilities.

Spreading outwards from this spine along a new wooded walkway, the other facilities are grouped around courts with progressively increasing levels of privacy and seclusion. These courts all have their own geometry and character offering clearly legible places.

The most westerly court is devoted to mental health with the Psychiatric Intensive Care unit located at the most secluded end, complete with its secure garden.

The laundry building on the Record of Protected Structures will be converted to serve as offices and the Day Service Facility for the HSE. Its accessibility from Grangegorman Upper Road, and the scale and flexibility of the construction of this building make it suitable for this kind of re-use.

Several HSE Housing developments are located to the east of the Primary Care facilities. Open courtyards and landscaped paths characterise the spaces around these buildings. The proximity of the Primary School to the east provides the opportunity for cross-generational interaction.

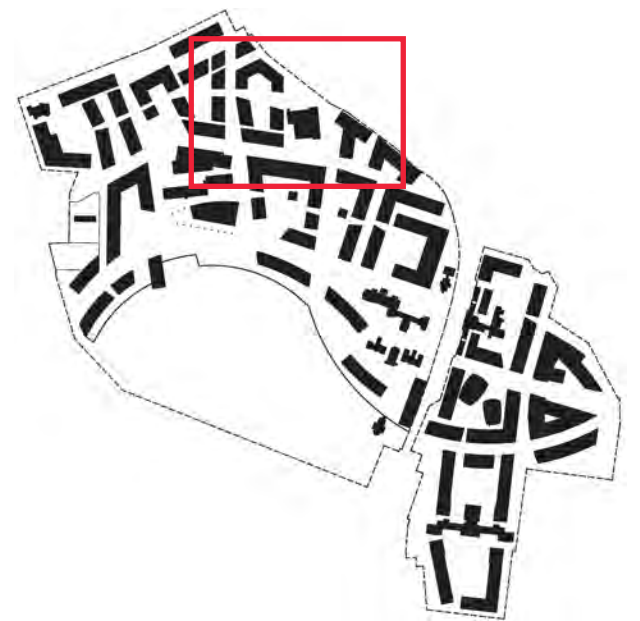


HSE mental health, primary care and library square

The Health Services Executive is organised around a series of landscaped quadrangles in the same manner as the Masterplan as a whole. The Primary Care facilities are considered to be the most publicly accessed spaces and have been centrally located at the core of the HSE area. Radiating out westward and eastward, the program spaces are organised to provide incrementally greater degrees of privacy and security befitting their uses and the sensitivity of the clients or building users.

Most of the Mental Health program for the HSE is located to the west. The Intensive Care unit is considered to require the most privacy and is located near the existing Grangegorman wall with secure courtyards to the east bordering the main courtyard space for the Mental Health quadrangle. The Rehabilitation and Respite Care program has been situated in north-south oriented buildings, some of which can be organised in townhome-type supported housing for residents with greater independence.

The Primary Care facilities are bordered to the north by an urban plaza facing North Circular Road and to the south is Library Square - a major urban plaza designed as an active and inviting space. The two plazas are linked by a major gateway into the Grangegorm Quarter that starts at North Circular Road and continues south to the Upper Terrace and The Fields.



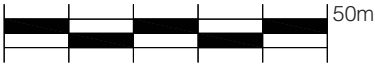
University of Texas Health Science Center, BNIM Architects with Lake | Flato, photo: Hester + Hardaway

grangegorman an urban quarter with an open future



REHAB, Switzerland, Herzog & de Meuron Architects, photo: Masao Nishikawa

architecture



REHAB, Switzerland, Herzog & de Meuron Architects, photo: Masao Nishikawa

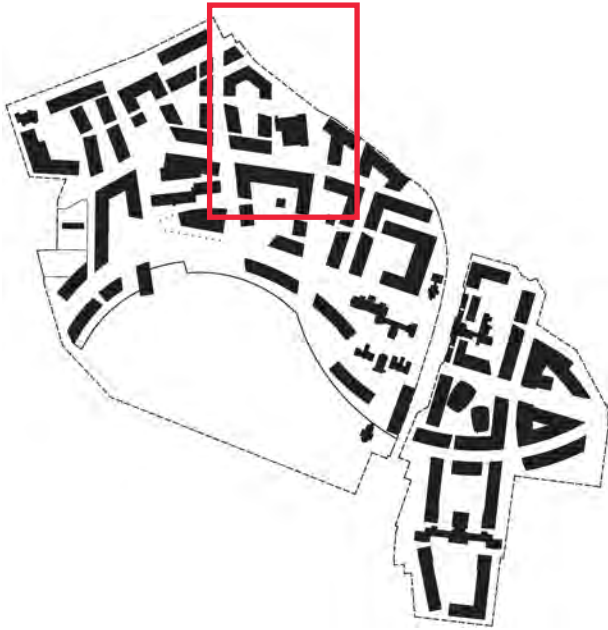


Dining Hall, Middlebury College Vermont, Kieran Timberlake Associates

HSE supported housing and day center facility

Several low-rise housing structures surround the Laundry building bordered by courtyards, gardens and pathways. The open plan of the former Laundry building will become a centre of activity when converted to its new use as offices and a day centre. The day centre is a place for residents of the health campus and of the surrounding community to come and share meals and participate in group activities. The existing openness of the interior spaces and existing overhead skylights will allow natural daylight to enter new open-office type spaces. A drop-off area is located to the north and a small park borders the day centre on the south side. A small urban plaza is located to the south-east where tables and chairs will be situated to provide outdoor seating on sunny days.

The various housing buildings to the west of the Day Centre form a major formal courtyard. To the west of these buildings is one of the green finger parks that traverse the site from North Circular Road southward to The Fields. The juxtaposition of the semi-private courtyard space and the more public green finger park will give residents various levels of opportunity to interact with the community.



ORANGE OUTLINE IS HSE LAND AREA = 10.02 ACRES



primary school

The Primary School is designated to have 16 classrooms with ancillary special education rooms. The site within the Masterplan was chosen for its easy accessibility from Grangegorman and Rathdown Roads and its separation but adjacency to the DIT and HSE buildings. The school's location would benefit from the parks and playspaces designed throughout the new Quarter and pupils would have access to the playfields to the south. A drop off is located near the main school entrance for pupils, staff and community access. There is currently an excess of under-utilised road space at the intersection of these two streets and it is suggested that this unused space could be added to the site footprint for the Primary School. The school's General Purpose Room has a separate entrance from Ivy Avenue that could provide after hours access for school gatherings and functions.



Horace Mann Primary School, San Jose California, Moore Ruble Yudell Architects and Planners



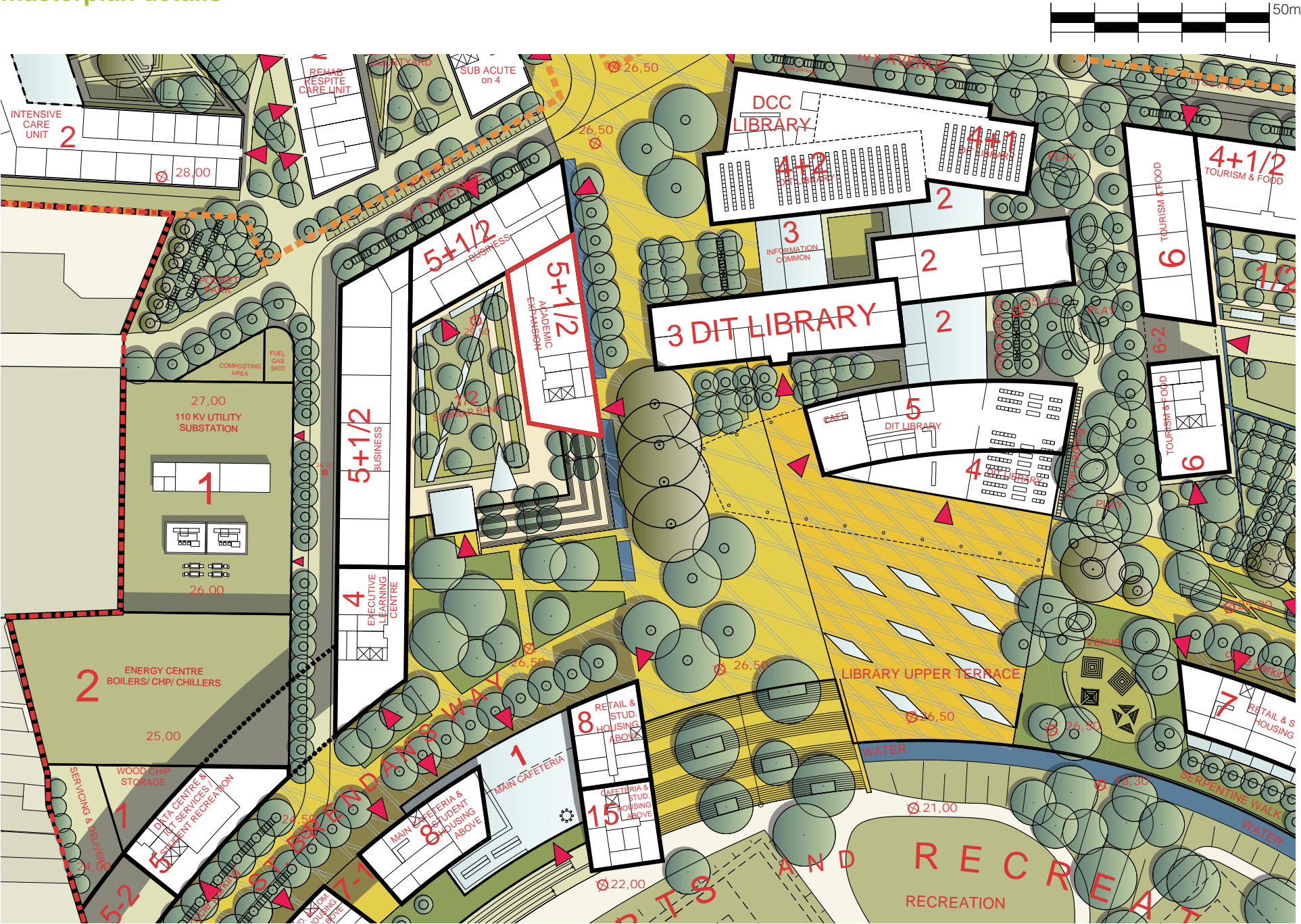
Horace Mann Primary School, San Jose California



Horace Mann Primary School, San Jose California



Horace Mann Primary School, San Jose California



the business school, DIT library and the upper terrace

The western-most core area of the Grangegorman Quarter has been termed the Academic and Health “heart” of the quarter. It is comprised of the DIT main library, Central Learning Classrooms, and the Upper Terrace to the south.

The Upper Terrace poses a dramatic belvedere looking south across The Fields. The Library’s information/study/ resource centre incorporates the historic Top House in a careful three-part composition of atria, courtyards, and new spaces, poised above the open green. The Upper Terrace provides a natural viewing platform for games and daily student life with the grand backdrop of the Dublin skyline and Mountains. From the Upper Terrace down to The Fields, a tiered stairway/ amphitheatre offers a venue for a variety of large-scale events, as well as a social ‘sun-catcher’ in fair weather and offers access to the sports centre below.



Pioneer Courthouse Square, Portland Oregon, Williard K. Martin, photo: Jan Gehl