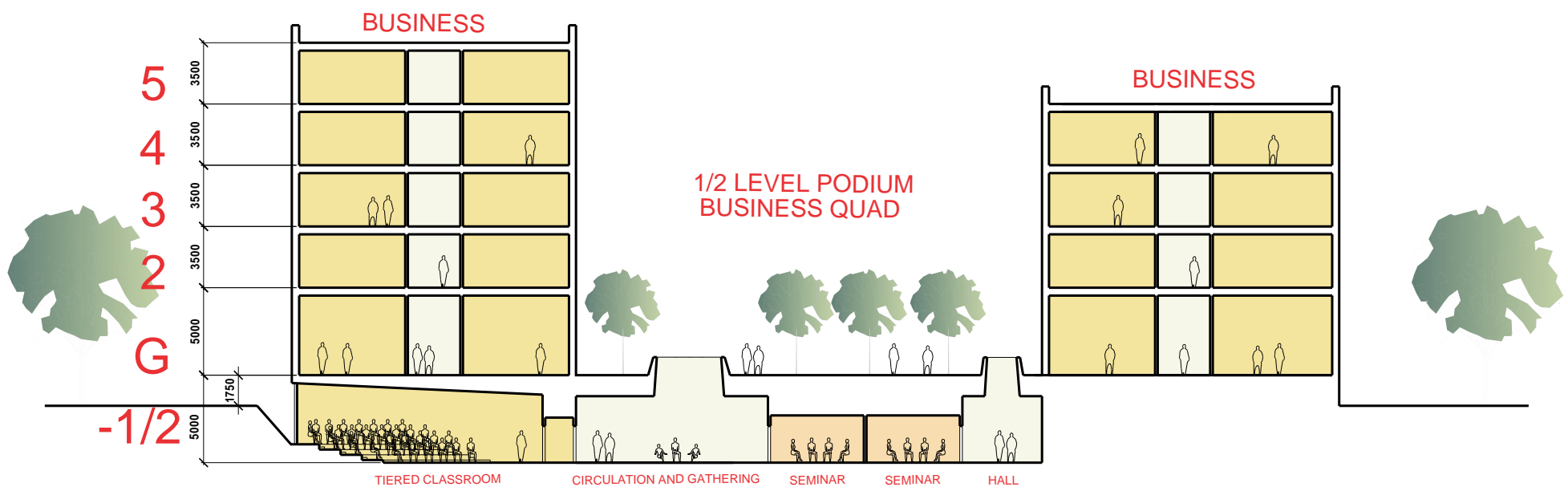
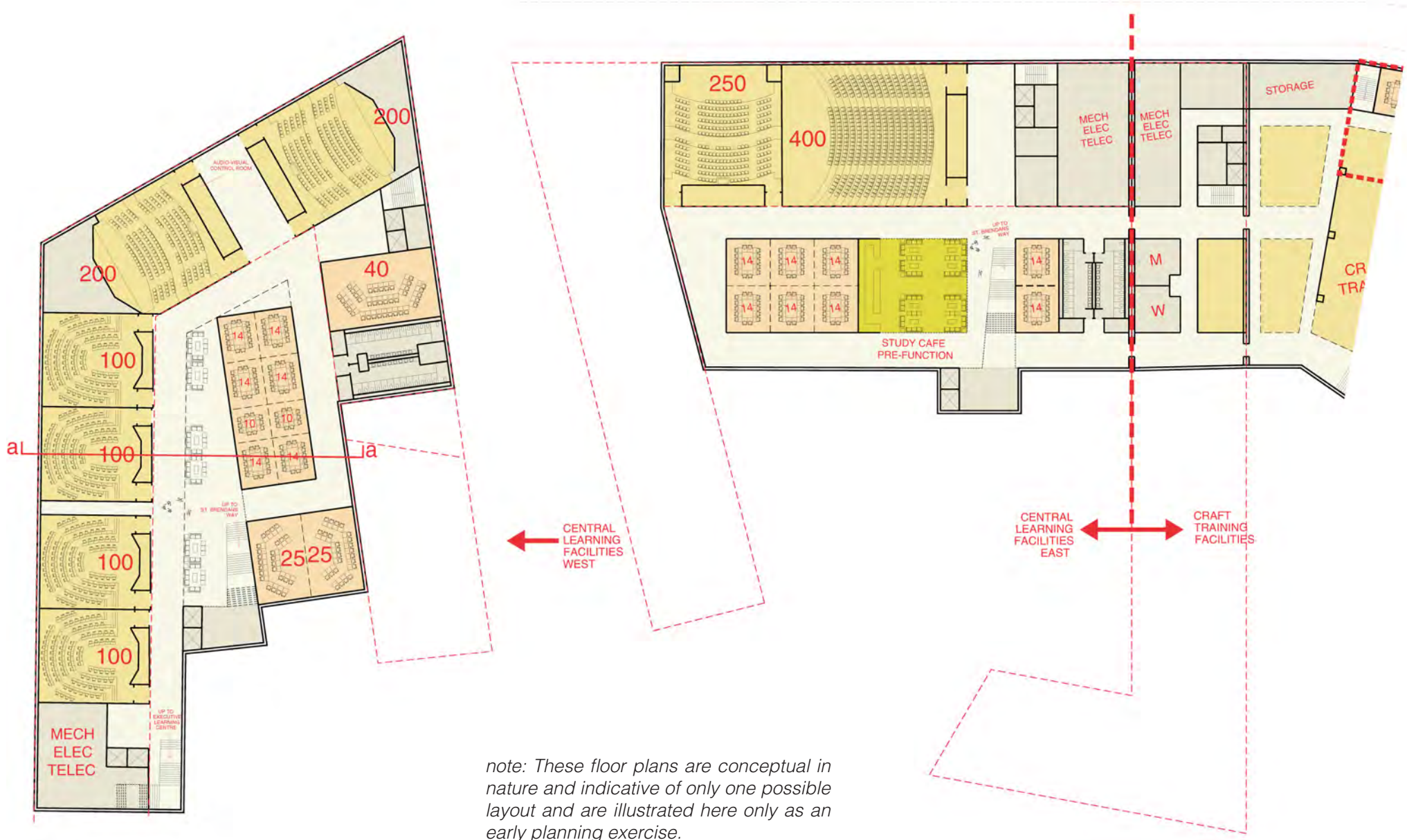
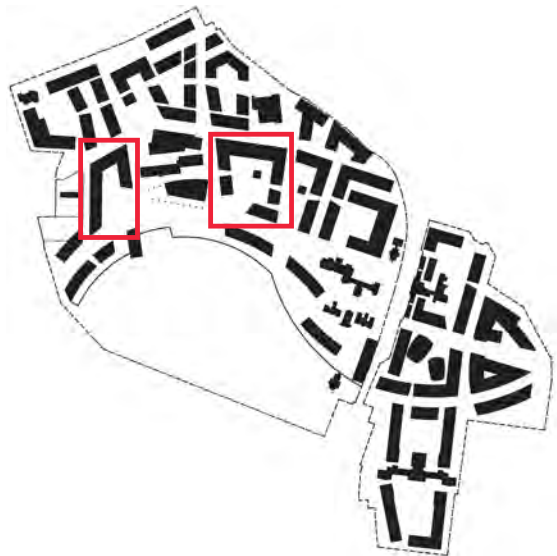


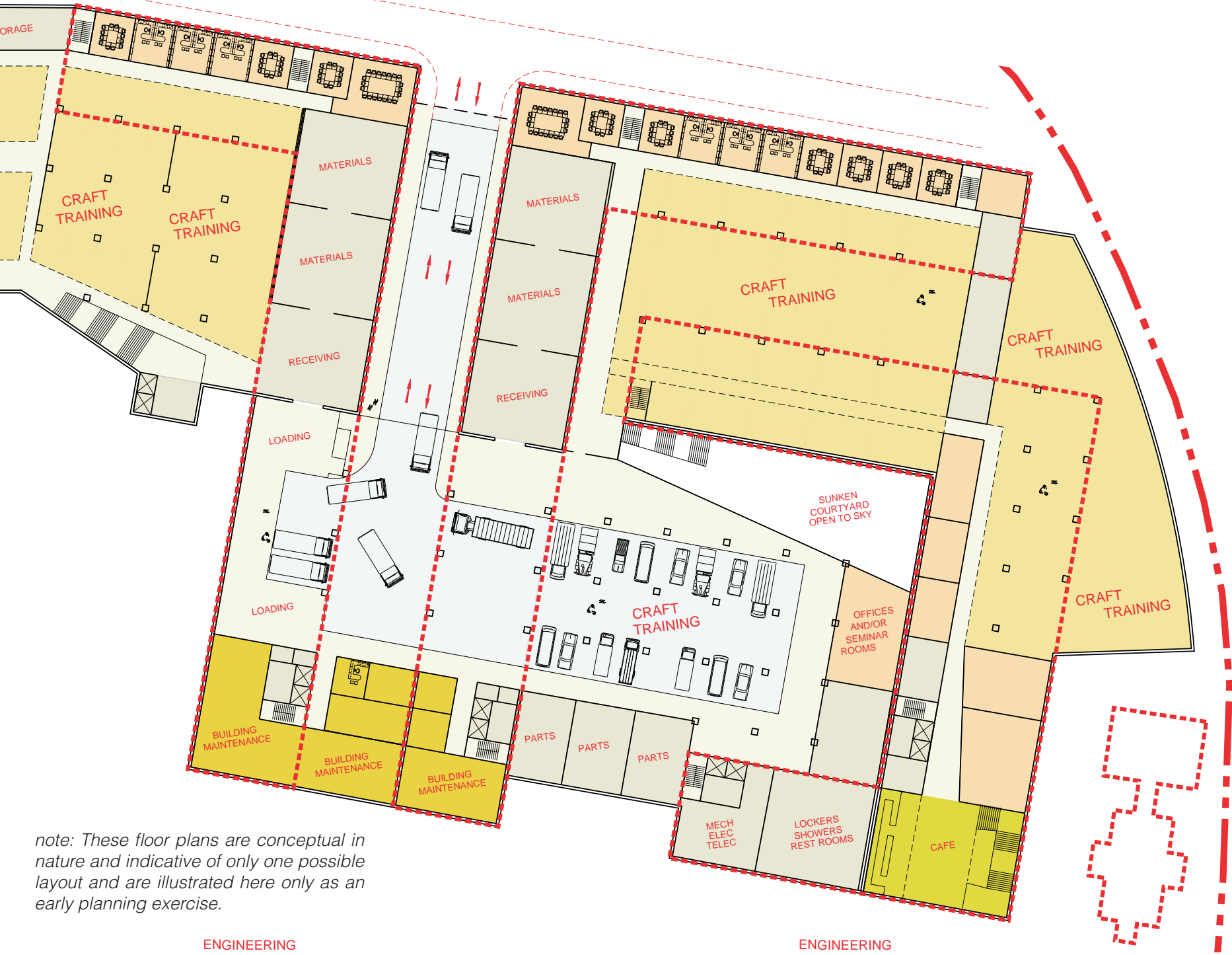
central learning classrooms

The relocation of all Institute activity to a single campus affords the opportunity to create a central bank of quality learning space in the form of lecture rooms, break-out rooms, seminar rooms and study spaces that would be accessed by all faculties and facilitate the growth or contraction of faculty demands for space over time by complementing the other dedicated faculty spaces around the Institute. It is important that these facilities are centrally located near the main DIT library as well as the Executive Learning Centre and function as a conference centre when not in academic use.

Due to the large space requirements of the Central Learning Facilities, their adjacency requirements to the main library and the density of the site, the Centre is located partially below grade creating a podium level. While the inwardly focused purpose of classroom activity does not require views out, natural daylight is considered a requirement in all learning spaces. Large classrooms and lecture halls are organised along the periphery of the space where natural daylight is brought in from the half-level of space above ground and by pulling away the grade to allow additional light to enter. Seminar rooms are daylit using various skylight elements and the open side of the south-facing podiums allows the opportunity to bring large amounts of natural light into the circulation and common spaces.



Richard Henriquez architect, photo: Nic Lehoux

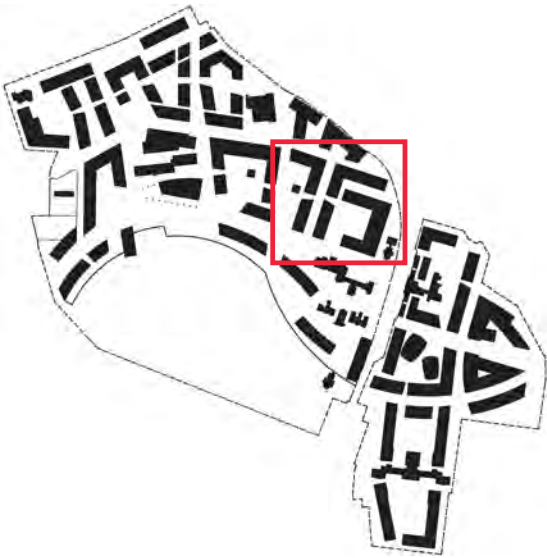


note: These floor plans are conceptual in nature and indicative of only one possible layout and are illustrated here only as an early planning exercise.

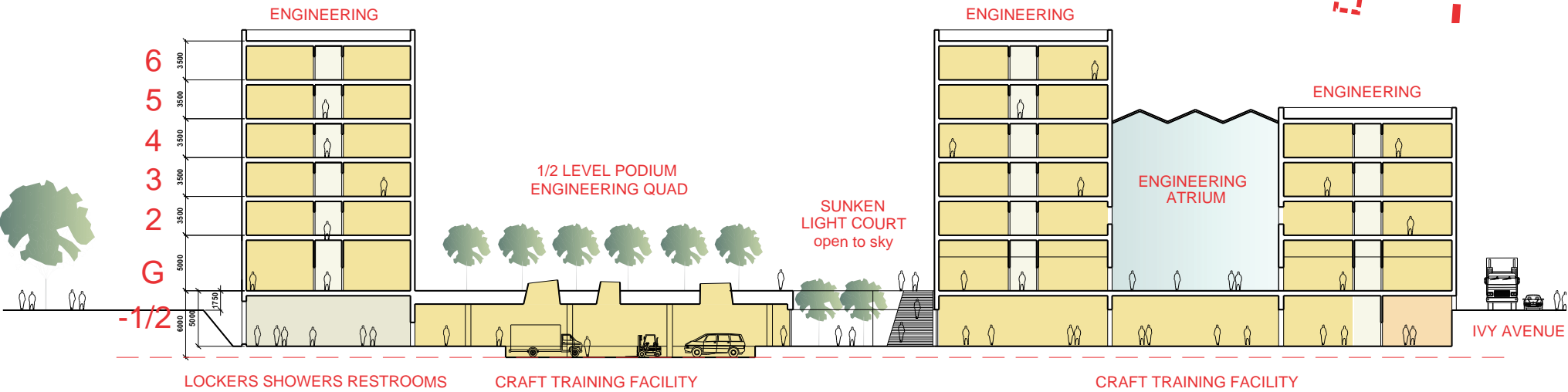
main apprenticeship training facilities

The Institute has a major involvement in and commitment to apprenticeship education and training and the relocation of the Institute provides the opportunity to locate much of these facilities closer to each other as well as near other DIT programs and students. A large portion of the facilities have been placed at the centrally located Engineering quad.

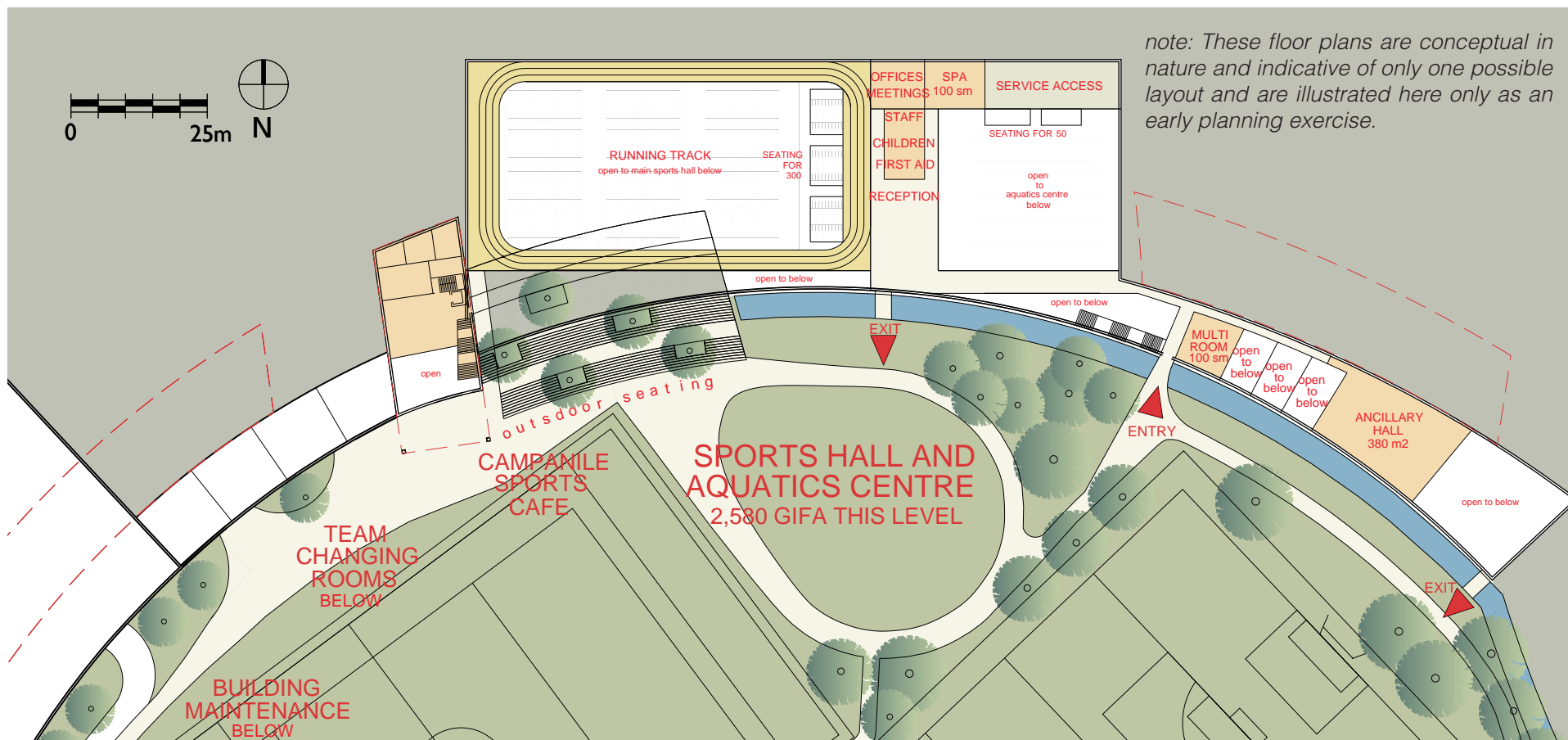
Due to large space requirements and heavy equipment, some of the Apprenticeship Training facilities have been located partially below grade similar to the Central Learning facilities, and employ similar means of acquiring daylight into all habitable spaces. Classrooms, seminar rooms and offices are located to the periphery to take advantage of the half-level podium above grade and the pulling away of the below grade space to allow additional light to enter the spaces. A key objective was to co-locate craft training facilities with undergraduate and graduate activities where possible. Areas with large floor areas such as workshops and maintenance bays are daylit by various skylight techniques and by incorporating daylight from the open-sided, south-facing glazed podium wall. In addition, daylight is supplied from a large sunken landscaped courtyard.



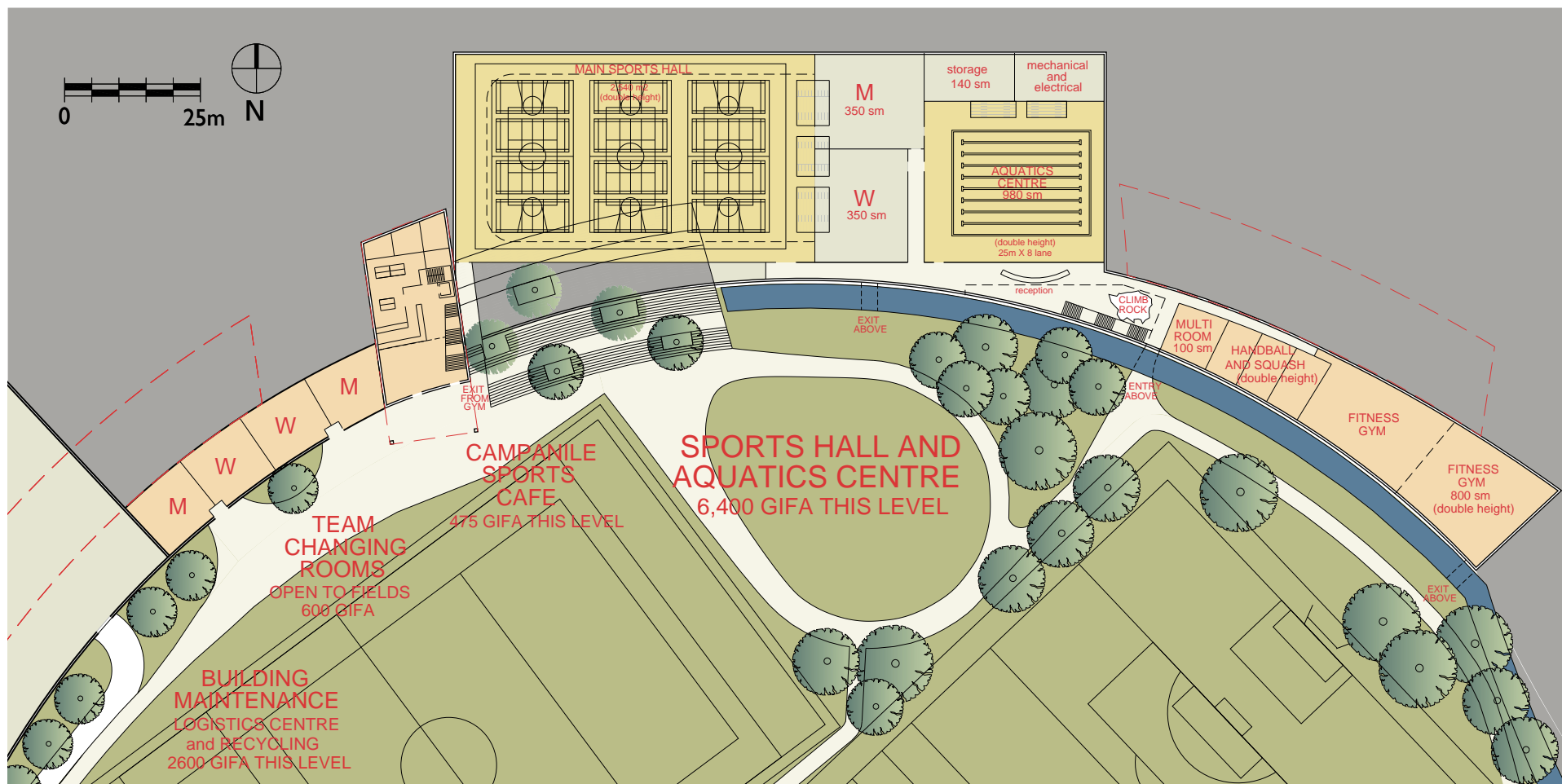
Pulling away the ground to allow light to enter lower levels.



Daylight enters lower level from sunken courtyard and skylights.



1. sports hall and aquatics centre upper level plan

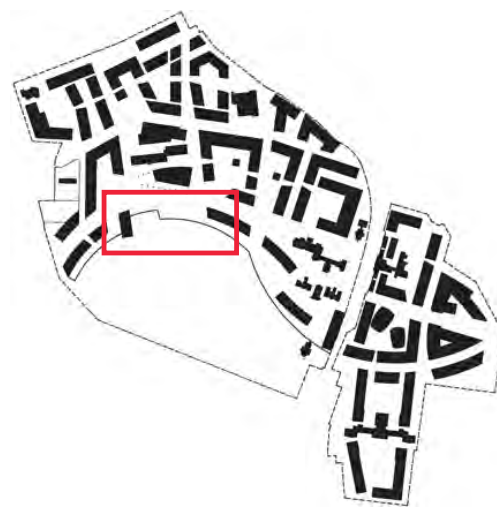


2. sports hall and aquatics centre lower level plan

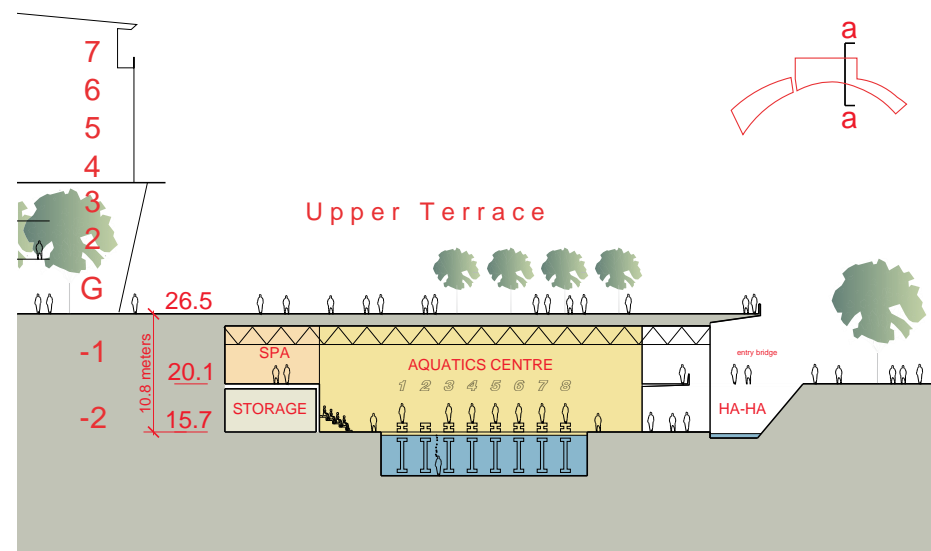
sports hall and aquatics centre

As with other DIT programs, the relocation of the sports program to the new site will enhance the student experience allowing students with varying educational focuses to mix with the greater college community, make friends and improve the social infrastructure of the Institute. The Sports Centre will also accommodate educational space for leisure related programs of DIT. In addition, by being open to the public, the Sports Centre will provide a place of interaction with the other users of the Grangegorman Quarter such as the Health Service Executive and Primary School as well as the local community.

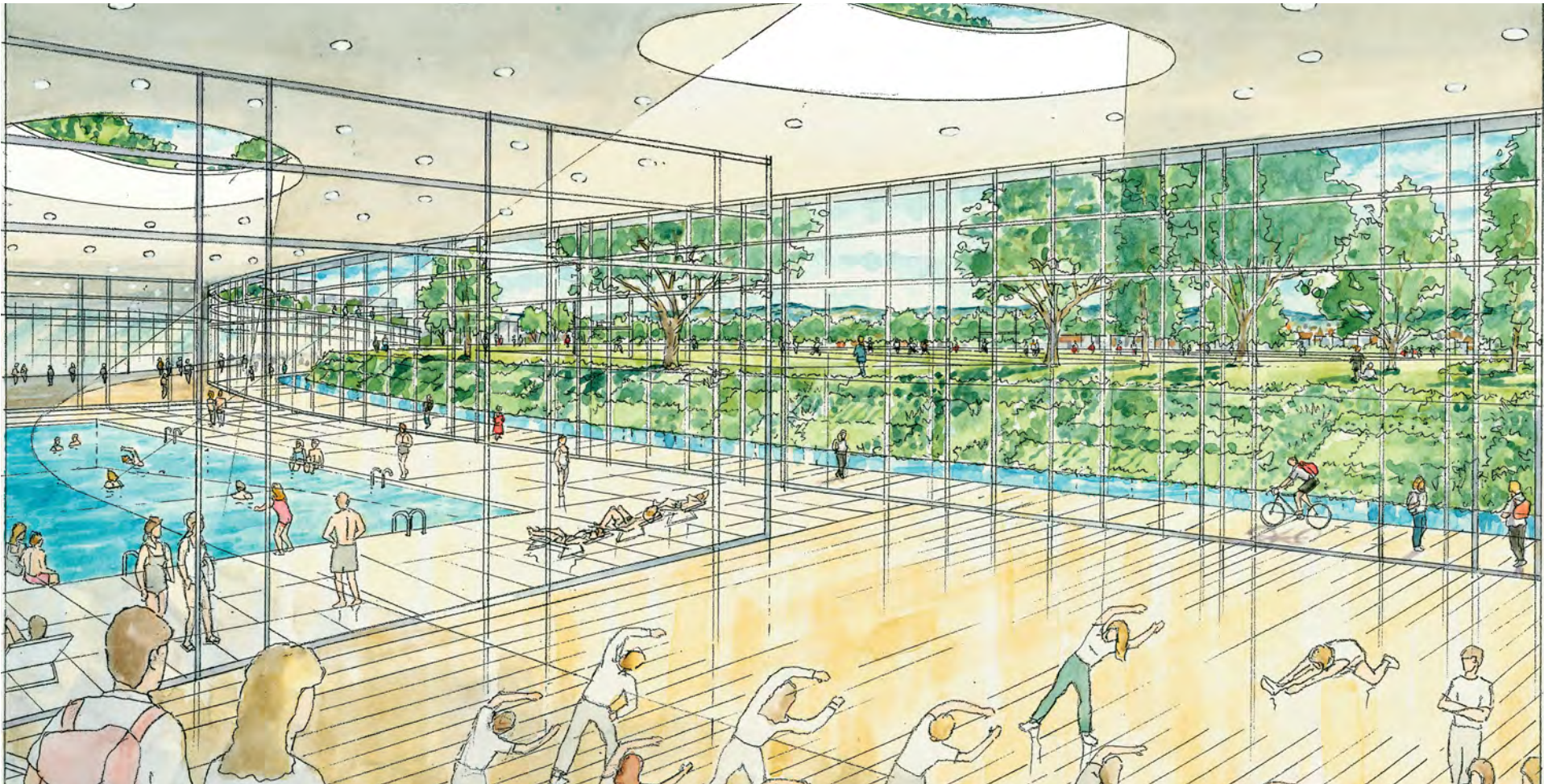
The two-level Sports Centre has been located in a high-profile and unique location between the outdoor playfields and the academic and health “heart” of the Quarter. Most pedestrian paths through the Quarter arrive at or pass by the Upper Terrace and the Sports Centre below. Most of the programmatic spaces face directly out to the Fields and are daylight by a south-facing glazed wall revealed by a “ha-ha” (an angled, sloped landscaped change in ground elevation). In addition to regular Sports Centre changing facilities located in the building, there are team changing facilities near the Sports Centre that are directly accessible from the playing fields.



View of a traditional ha-ha.



3. section through aquatics centre



1. view of daylit sports centre and ha-ha

The Sports Centre will be daylit by overhead skylights and by using glass walls adjacent to a landscaped “ha-ha” (an angled sloping change in ground elevation).



2. view of daylit craft training area with courtyard

The Craft Training Facilities will be located partially underground due to the large floor areas required and the weight of heavy machinery. These spaces will be daylit through a number of ways including overhead skylights and sunken landscaped courtyards.

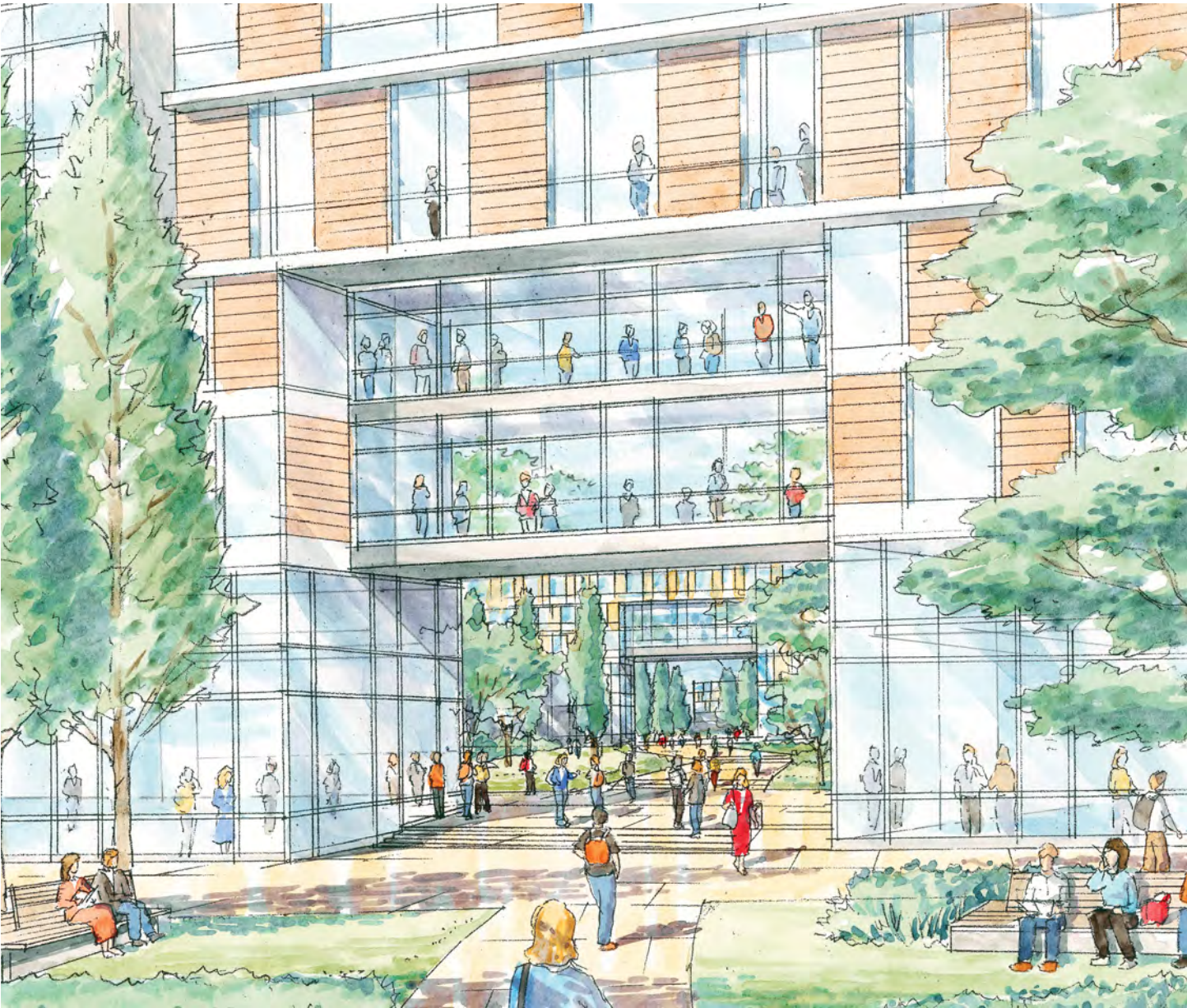




1. view of the campanile, library and upper terrace

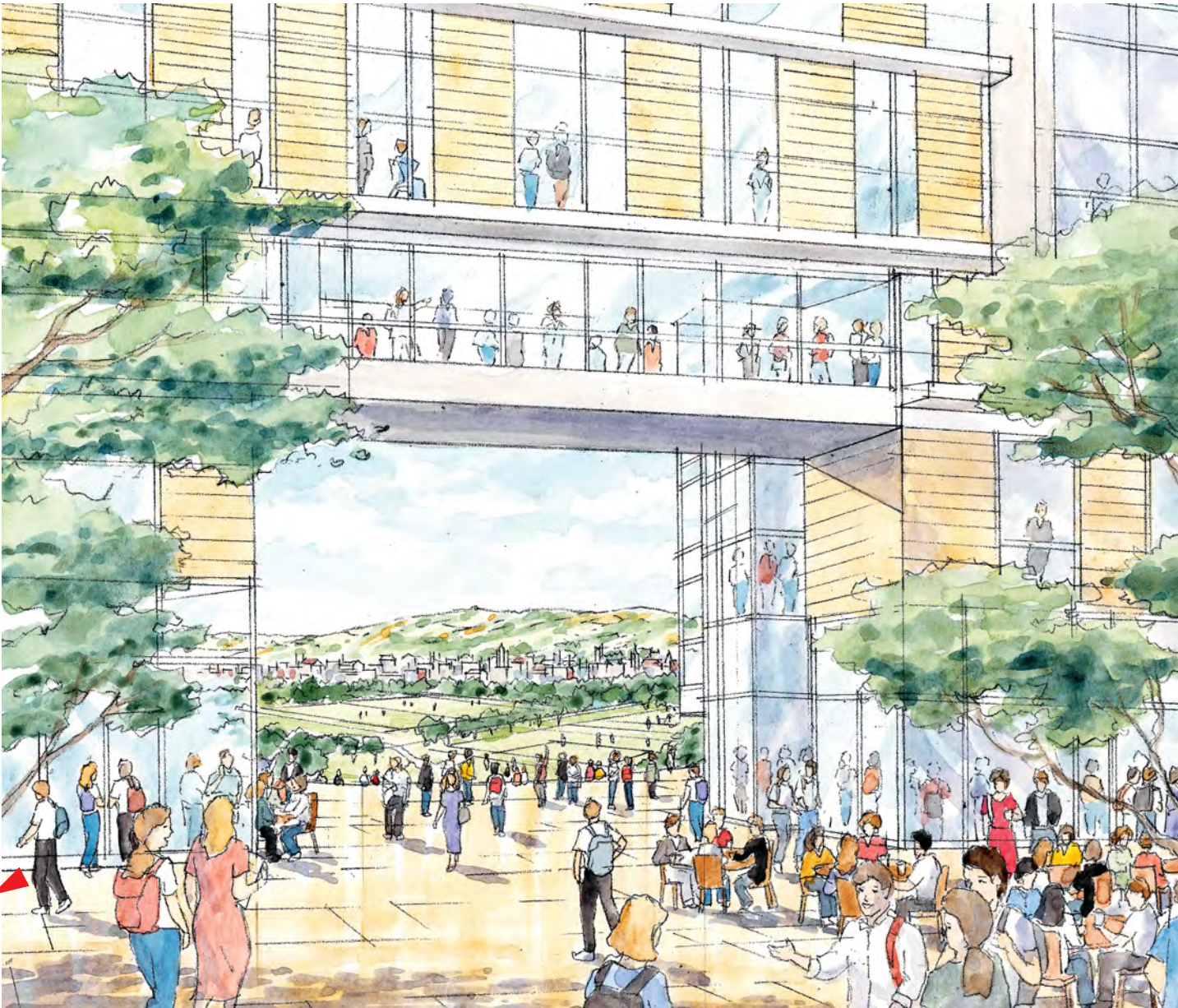
A grand staircase from the Upper Terrace provides south-facing places to sit, study, meet friends and watch the sporting events on the Fields. The Campanile creates an iconic marker for the University as well as allows public viewing spaces above and cafes and eateries accessible from the Fields below.





1. gateway through academic building

Connective passageways serve to link between different quads. Passageways also connect the variety of open spaces offered within the Quarter, including individual gardens as well as major open spaces. The consistent use of specific trees and plantings along these passageways, as well as the use of particular paving and lighting standards, add to the collective district image, and visually enhance connectivity throughout the Quarter.



2. gateway through student housing building

Along St. Brendan's Way, openings are created to maximise daylight and to frame views south overlooking the Fields and to the mountains beyond.



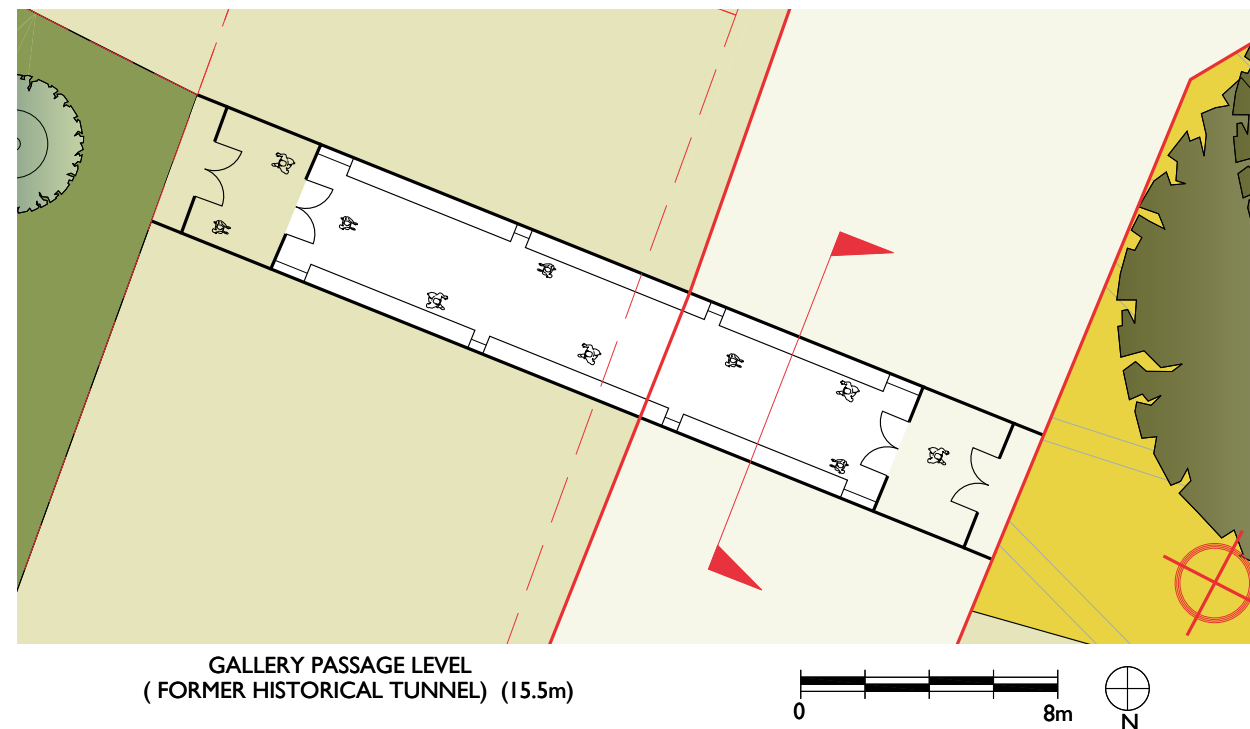
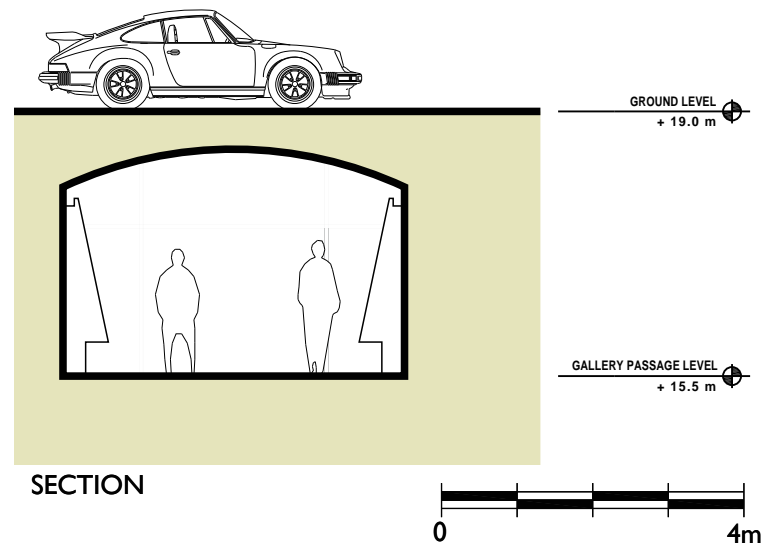
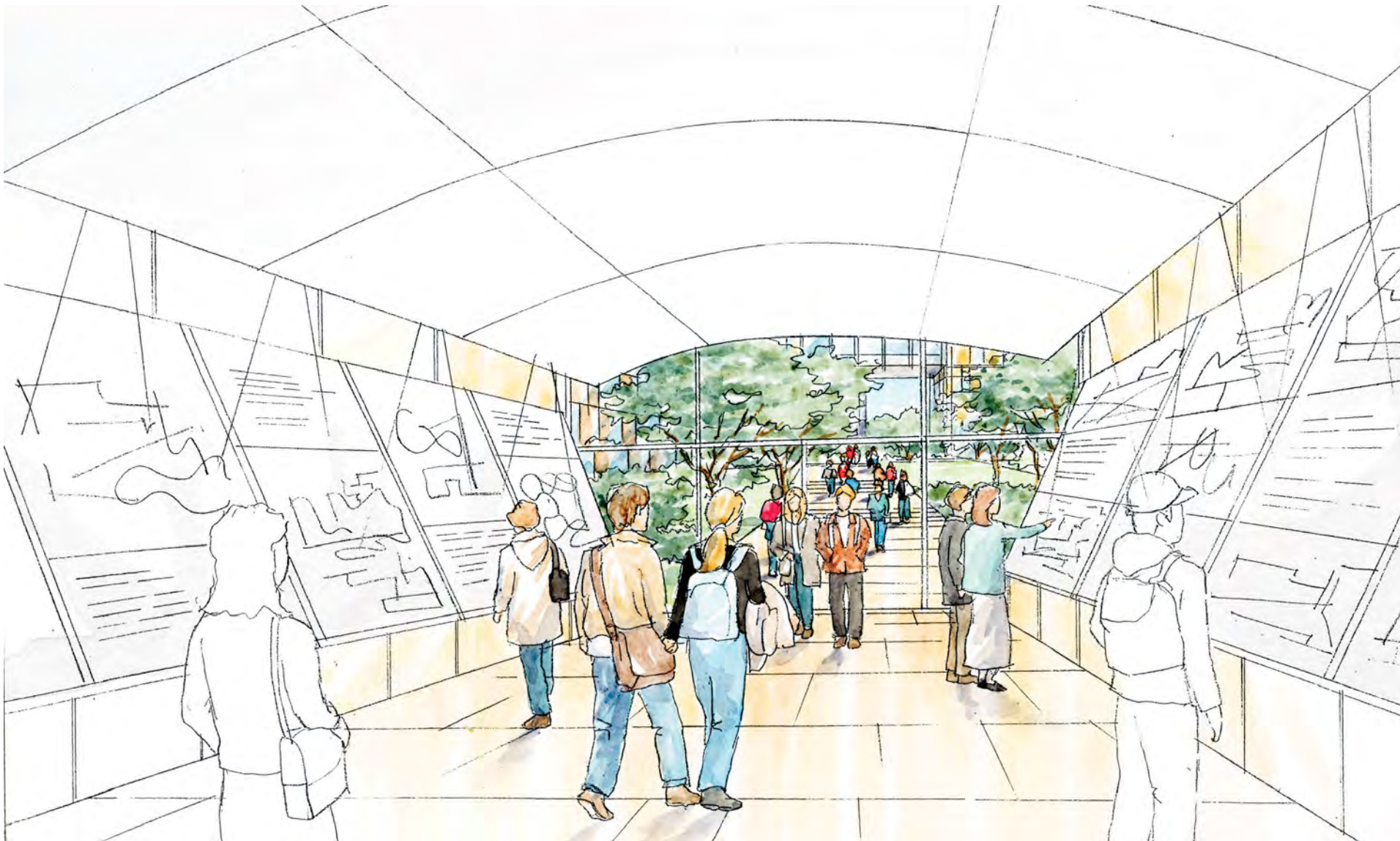
gallery passage

The existing tunnel under Lower Grangegorman Road has been part of the fabric of the Grangegorman site for many years. During this time, it has accommodated the movement of people, clients and users between the west and east parts of the site.

The Masterplan seeks to incorporate this tunnel as part of the new history of the Grangegorman Urban Quarter, by proposing its transformation into a future “Gallery Passage” hosting permanent and temporary exhibitions. Similar to the Cultural Garden, this well-lit space can provide an important connection to the culture, spirit and history of the place. The gallery would have certain hours of operation and would be attendant supervised.

The future exhibitions in this space can cover a wide range of topics related to the Grangegorman site, DIT, HSE, and the surrounding community, including the following:

- History of the Grangegorman site.
- History of DIT.
- History of HSE in Dublin.
- More information on the mission, goals or various departments of HSE or DIT.
- Artwork by DIT instructors, staff or students.
- Artwork by HSE clients and users.
- Artwork by members of the surrounding community.





Parking Garage Facade, Santa Monica California, Moore Ruble Yudell Architects and Planners



Martha Schwartz



Vertical Garden, Musee du quai Branly, Patrick Blanc



Patrick Blanc

energy centre & electrical substation

The project's power and utility buildings are consolidated in an area along the west boundary of the site, to the north of St. Brendan's Way. These include the Energy Centre, the Electrical Substation, the Wood Chip Storage, and the Composting Area.

Strong architectural concept

These buildings can provide a welcome opportunity to create architecture out of a common, utilitarian building type—one that is not generally associated with high design standards. The Masterplan views these standard service amenities from a fresh perspective and encourages design that would allow them to have a positive impact on their surroundings.

Instead of disguising the utilitarian nature of these buildings, the Masterplan seeks to celebrate this aspect as part of the educational and design aesthetic of the Grangegorman Urban Quarter, by proposing a strong architectural approach—the “Vertical Landscape.”

Vertical landscape

The building facades are characterised as a landscape feature, with vines and plantings on the walls. The landscaped spaces are integrated with large windows to allow views inside of the machinery and ductwork, thereby making these buildings become part of the learning process for DIT students and others in the District.

As an extension of the landscape theme, the large roof of the Energy Centre is proposed to be used as an additional area for growing organic vegetables for the Tourism & Food faculty, utilising waste heat from the plant below. The Masterplan envisions the dynamic combination and integration of these landscape and architectural strategies and materials to allow the utility buildings to function as an effective “urban curtain” in their context within the Grangegorman Urban Quarter.



University of Pennsylvania Chiller Complex, Leers Weinzapfel Associates Architects, photo: ©Peter Aaron/Esto