

**Report Noise Vibration and Dust
For John Paul Construction**

19 Aug 2019

Revision	Prepared By	Date	Approved	Date
00	K. O'Brien	19 Aug 2019	C. Heavey	19 Aug 2019

Report prepared by: Kevin O'Brien MIEI
Environmental Measurements
Unit 12, Tallaght Business Centre
Whitestown Business Park
Dublin 24.
Ph: 01 4149445
Fax; 01 4057917
Email: kevinobrien@e-m.ie

Contents

1.	Introduction.....	4
2.	Methodology	5
2.1	Vibration.....	5
2.2	Noise.....	5
2.3	Dust	5
3.	Results	6
3.1	Vibration.....	6
3.1.1	(V1) On the site boundary wall with Prussia Street.....	6
3.2	Noise.....	8
3.2.1	(N1) At the site boundary wall with Prussia Street.....	8
3.3	Dust.....	13
3.3.1	(D1) At the site boundary wall with Prussia Street.....	13

1. Introduction

At the request of John Paul Construction our company Environmental Measurements has carried out noise, vibration and dust monitoring at the site of the Interim Energy Centre (IEC) enabling works project, Grangegorman.

The purpose of the monitoring was to determine the levels of Noise, Vibration and Dust impacting on the monitoring points while John Paul Construction carried out works at the site.

One Vibration Monitor, one Noise Monitor and one Dust Monitor were installed at the following positions:

One Vibration Monitor (V1) on the site boundary wall with Prussia Street.

One Noise monitor (N1) at the site boundary wall with Prussia Street.

One Dust monitor (D1) at the site boundary wall with Prussia Street.



Figure 1 Image of Noise, Vibration and Dust Monitors at site boundary wall.

2. Methodology

2.1 Vibration

Vibration measurements were carried out in accordance with BS ISO 4866 : 2010 Mechanical Vibration and Shock, Vibration of Fixed Structures, Guidelines for the Measurement of Vibrations and Evaluation of their effects on structures.

At the vibration monitoring point an Instantel model MiniMate Plus Vibration monitor was installed. This monitor is a triaxial velocity meter which measures peak particle velocity (ppv) in mm/sec together with the frequency at peak. This allows for the calculation of acceleration and displacement at peak.

2.2 Noise

Noise measurements were carried out in accordance with ISO 1996 – 2007 Part 2, Description measurement and assessment of environmental noise - Part 2 Determination of Environmental Noise Levels.

At the noise monitoring point a Larson Davis Model Lxt noise monitor was installed. This is an integrating sound level meter which measures the standard sound level parameters of Leq, Max, Min, Pk, UnwPk and Lns.

2.3 Dust

Dust measurements were carried out in accordance with VDI 4320 – 2010 Part 1, Measurement of Atmospheric Depositions - Sampling with bulk and wet only collectors – General Principles.

At the dust monitoring point a Bergerhoff Dust Deposit Gauge was installed. These are Dust collection devices which are put in place for 28 to 30 days after which the samples are brought to a laboratory for analysis and the results tell you the concentration in mg/sqm/day.

3. Results

3.1 Vibration

3.1.1 (V1) On the site boundary wall with Prussia Street.

Monitoring covers the period from 12 Aug to 19 Aug 2019.

A Peak Particle Velocity (PPV) of 1.905 mm/sec was recorded during this period.

This level is below the level of vibration required to have potential for cosmetic damage.
Ref: BS 7385 Part 2 1993 Evaluation and measurement for vibration in buildings.



Event Report

Histogram Start Time 10:46:41 August 12, 2019
Histogram Finish Time 14:16:58 August 19, 2019
Number of Intervals 2058.00 at 5 minutes
Range Geo: 254.0 mm/s
Sample Rate 1024sps
Job Number: 1

Serial Number BE10940 V 10.72-8.17 MiniMate Plus
Battery Level 6.8 Volts
Unit Calibration August 21, 2018 by E.M.
File Name L94012A3.9T0

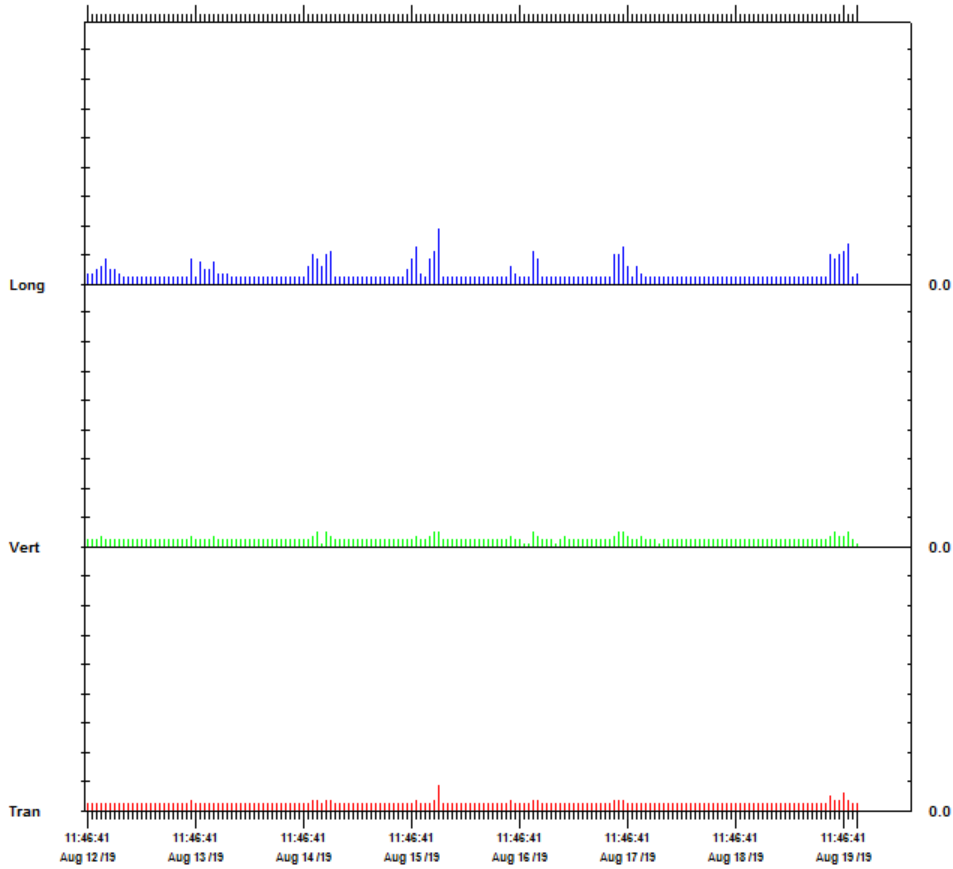
Notes

Location:
 Client:
 User Name:
 General:

Extended Notes

	Tran	Vert	Long	
PPV	0.889	0.508	1.905	mm/s
ZC Freq	23	32	23	Hz
Date	Aug 15 /19	Aug 14 /19	Aug 15 /19	
Time	17:01:41	13:51:41	17:01:41	
Sensor Check	Passed	Passed	Passed	

Peak Vector Sum 1.926 mm/s on August 15, 2019 at 17:01:41



Time Scale: 1 hour/div Amplitude Scale: Geo: 1.000 mm/s/div

Printed: August 21, 2019 (V 10.74)

Format © 1995-2015 Xmark Corporation

3.2 Noise

3.2.1 (N1) At the site boundary wall with Prussia Street.

Monitoring covers the period from 12 Aug to 19 Aug 2019.

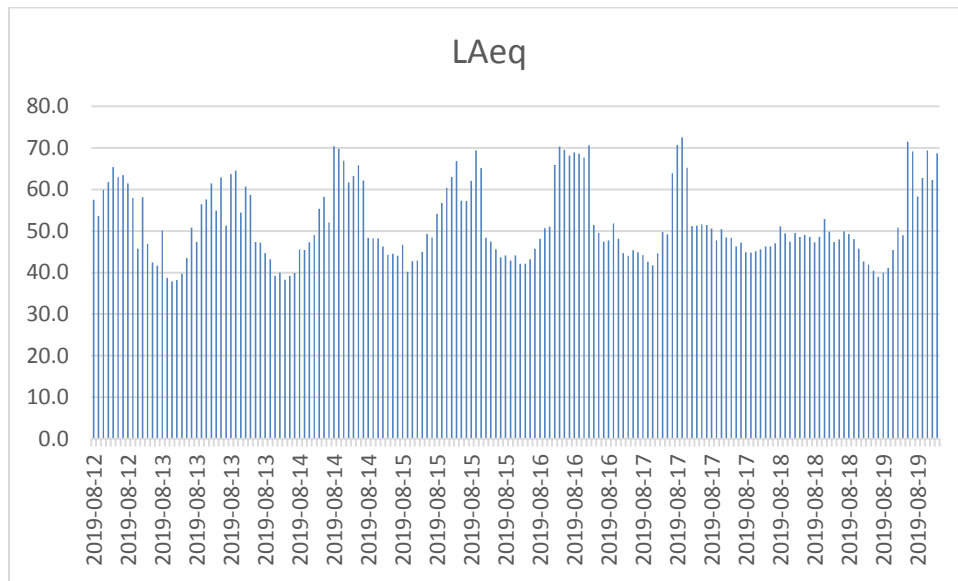


Figure 2 Graph of 1 Hour LAeqs

Noise presented in 1 Hour Leqs.

Date	Time	Run Duration	LAeq	LAFmin	LAFmax	LAF5.00	LAF10.00	LAF50.00	LAF90.00
2019-08-12	10:54:00	00:05:59.2	57.5	42.6	78.5	64.1	61.1	52.1	46.7
2019-08-12	11:00:00	01:00:00.0	53.6	40.0	77.4	54.9	53.1	49.9	47.1
2019-08-12	12:00:00	01:00:00.0	59.9	46.0	81.2	65.6	63.1	55.2	50.4
2019-08-12	13:00:00	01:00:00.0	61.7	47.9	81.5	67.8	65.1	57.2	51.9
2019-08-12	14:00:00	01:00:00.0	65.4	49.0	83.2	71.3	68.9	61.6	56.3
2019-08-12	15:00:00	01:00:00.0	63.0	47.4	84.5	68.4	66.1	60.2	55.3
2019-08-12	16:00:00	01:00:00.0	63.5	51.2	82.9	69.3	67.1	60.1	55.6
2019-08-12	17:00:00	01:00:00.0	61.4	41.3	78.8	67.4	64.9	58.5	45.2
2019-08-12	18:00:00	01:00:00.0	58.0	37.2	80.1	64.9	61.0	45.7	40.9
2019-08-12	19:00:00	01:00:00.0	45.7	38.4	70.9	48.9	47.0	43.3	41.2
2019-08-12	20:00:00	01:00:00.0	58.1	38.6	79.7	64.4	57.1	44.4	41.3
2019-08-12	21:00:00	01:00:00.0	46.9	36.9	66.3	52.1	48.8	42.1	39.7
2019-08-12	22:00:00	01:00:00.0	42.4	36.1	56.4	46.1	44.4	40.9	38.8
2019-08-12	23:00:00	01:00:00.0	41.7	35.0	58.1	45.1	43.5	39.8	37.9

Date	Time	Run Duration	LAeq	LAFmin	LAFmax	LAF5.00	LAF10.00	LAF50.00	LAF90.00
2019-08-13	00:00:00	01:00:00.0	50.1	33.6	76.4	55.2	49.5	38.9	36.1
2019-08-13	01:00:00	01:00:00.0	38.8	34.0	53.0	42.2	40.6	37.6	36.1
2019-08-13	02:00:00	01:00:00.0	37.9	32.3	51.8	41.1	39.6	36.9	35.4
2019-08-13	03:00:00	01:00:00.0	38.2	33.3	52.2	41.5	40.0	37.1	35.8
2019-08-13	04:00:00	01:00:00.0	39.7	34.1	59.5	43.0	41.5	38.6	36.8
2019-08-13	05:00:00	01:00:00.0	43.5	36.2	63.9	47.4	46.0	42.1	39.3
2019-08-13	06:00:00	01:00:00.0	50.9	40.8	69.0	57.4	54.4	46.1	43.5
2019-08-13	07:00:00	01:00:00.0	47.3	42.0	68.3	50.8	48.8	45.8	44.0
2019-08-13	08:00:00	01:00:00.0	56.4	44.2	74.5	61.2	56.8	50.2	47.0
2019-08-13	09:00:00	01:00:00.0	57.6	42.7	82.5	64.2	60.2	52.7	48.3
2019-08-13	10:00:00	01:00:00.0	61.5	44.4	87.9	63.7	59.1	50.7	47.3
2019-08-13	11:00:00	01:00:00.0	54.9	41.0	76.1	58.0	56.1	50.2	46.0
2019-08-13	12:00:00	01:00:00.0	62.9	41.1	82.8	70.1	67.4	54.5	45.3
2019-08-13	13:00:00	01:00:00.0	51.3	40.4	75.4	58.0	56.0	45.1	42.7
2019-08-13	14:00:00	01:00:00.0	63.7	42.6	80.0	70.7	67.3	57.0	46.2
2019-08-13	15:00:00	01:00:00.0	64.5	50.7	81.1	71.1	68.2	60.1	54.8
2019-08-13	16:00:00	01:00:00.0	54.4	41.9	78.8	60.1	57.3	49.4	45.1
2019-08-13	17:00:00	01:00:00.0	60.7	49.4	82.1	65.9	63.3	58.0	52.8
2019-08-13	18:00:00	01:00:00.0	58.7	39.0	80.9	65.5	62.6	48.5	41.5
2019-08-13	19:00:00	01:00:00.0	47.4	38.6	66.6	51.4	49.8	44.6	41.0
2019-08-13	20:00:00	01:00:00.0	47.2	36.7	69.5	53.2	49.6	42.2	39.6
2019-08-13	21:00:00	01:00:00.0	44.7	36.4	69.0	49.8	47.0	41.2	38.8
2019-08-13	22:00:00	01:00:00.0	43.2	35.2	60.4	47.9	45.9	39.8	37.1
2019-08-13	23:00:00	01:00:00.0	39.2	34.9	54.3	42.1	41.1	38.4	36.6
2019-08-14	00:00:00	01:00:00.0	39.9	35.3	49.2	42.7	41.8	39.4	37.6
2019-08-14	01:00:00	01:00:00.0	38.3	35.1	50.9	40.6	39.7	37.7	36.5
2019-08-14	02:00:00	01:00:00.0	39.2	35.9	52.4	41.7	40.9	38.6	37.4
2019-08-14	03:00:00	01:00:00.0	39.9	36.0	54.6	42.4	41.3	39.2	38.0
2019-08-14	04:00:00	01:00:00.0	45.6	36.9	64.5	51.9	49.4	41.1	39.1
2019-08-14	05:00:00	01:00:00.0	45.4	38.0	70.9	48.3	46.2	42.9	40.7
2019-08-14	06:00:00	01:00:00.0	47.3	41.5	73.9	49.4	48.0	46.0	44.1
2019-08-14	07:00:00	01:00:00.0	49.0	44.5	63.9	51.9	50.5	48.1	46.7
2019-08-14	08:00:00	01:00:00.0	55.4	45.2	76.1	61.2	57.6	50.3	47.5
2019-08-14	09:00:00	01:00:00.0	58.2	44.9	78.9	64.8	61.6	52.4	47.5
2019-08-14	10:00:00	01:00:00.0	52.1	42.4	78.4	56.3	53.9	49.8	45.5
2019-08-14	11:00:00	01:00:00.0	70.4	42.2	84.7	79.0	76.9	48.3	45.6
2019-08-14	12:00:00	01:00:00.0	69.7	47.7	91.5	78.8	75.5	56.4	49.9
2019-08-14	13:00:00	01:00:00.0	66.9	48.1	90.6	71.0	67.0	58.5	50.6
2019-08-14	14:00:00	01:00:00.0	61.7	40.4	80.7	68.5	67.0	50.3	43.6
2019-08-14	15:00:00	01:00:00.0	63.2	46.9	81.1	69.1	67.4	57.3	50.9
2019-08-14	16:00:00	01:00:00.0	65.8	49.5	92.5	69.4	66.6	58.1	51.8
2019-08-14	17:00:00	01:00:00.0	62.1	42.9	88.0	63.7	59.1	50.1	47.0
2019-08-14	18:00:00	01:00:00.0	48.3	40.6	77.9	49.1	47.7	44.8	43.1

Date	Time	Run Duration	LAeq	LAFmin	LAFmax	LAF5.00	LAF10.00	LAF50.00	LAF90.00
2019-08-14	19:00:00	01:00:00.0	48.2	40.5	68.5	52.2	50.1	45.7	43.5
2019-08-14	20:00:00	01:00:00.0	48.2	40.3	66.5	53.0	49.6	44.9	42.8
2019-08-14	21:00:00	01:00:00.0	46.2	38.9	66.2	48.8	46.7	43.6	41.8
2019-08-14	22:00:00	01:00:00.0	44.2	35.8	64.3	47.4	46.0	42.9	40.7
2019-08-14	23:00:00	01:00:00.0	44.5	34.2	61.4	47.5	46.3	43.0	40.9
2019-08-15	00:00:00	01:00:00.0	44.0	32.1	62.3	47.8	46.3	42.7	40.4
2019-08-15	01:00:00	01:00:00.0	46.7	37.1	70.0	51.0	47.8	42.0	39.5
2019-08-15	02:00:00	01:00:00.0	40.2	35.4	54.1	43.8	42.3	39.1	37.4
2019-08-15	03:00:00	01:00:00.0	42.8	34.8	64.5	46.7	44.9	40.6	38.1
2019-08-15	04:00:00	01:00:00.0	42.9	36.4	66.6	46.2	44.6	40.8	38.8
2019-08-15	05:00:00	01:00:00.0	44.9	37.4	60.9	48.8	47.4	43.4	40.9
2019-08-15	06:00:00	01:00:00.0	49.2	41.0	72.1	52.4	50.1	46.3	44.1
2019-08-15	07:00:00	01:00:00.0	48.4	41.5	67.9	50.7	49.7	47.3	45.4
2019-08-15	08:00:00	01:00:00.0	54.2	44.5	74.4	58.9	56.0	49.2	46.8
2019-08-15	09:00:00	01:00:00.0	56.7	45.3	79.5	61.8	60.4	52.8	48.7
2019-08-15	10:00:00	01:00:00.0	60.3	44.1	90.8	63.9	61.7	50.2	46.9
2019-08-15	11:00:00	01:00:00.0	63.0	44.6	87.7	69.2	66.7	55.1	47.8
2019-08-15	12:00:00	01:00:00.0	66.9	45.8	88.3	71.0	69.2	57.9	48.7
2019-08-15	13:00:00	01:00:00.0	57.3	42.9	83.7	62.3	60.4	52.6	47.5
2019-08-15	14:00:00	01:00:00.0	57.2	39.5	80.5	62.8	58.9	49.5	43.7
2019-08-15	15:00:00	01:00:00.0	62.1	44.8	82.1	67.1	64.2	56.3	48.5
2019-08-15	16:00:00	01:00:00.0	69.4	53.6	94.7	72.6	70.5	64.1	58.2
2019-08-15	17:00:00	01:00:00.0	65.1	40.3	90.8	70.4	67.9	52.5	43.6
2019-08-15	18:00:00	01:00:00.0	48.3	38.1	76.0	47.0	45.4	42.8	41.2
2019-08-15	19:00:00	01:00:00.0	47.4	37.8	73.4	51.1	48.3	43.5	40.9
2019-08-15	20:00:00	01:00:00.0	45.6	36.7	63.1	50.5	47.0	42.2	39.8
2019-08-15	21:00:00	01:00:00.0	43.6	36.5	59.4	47.5	45.2	41.5	39.5
2019-08-15	22:00:00	01:00:00.0	44.1	37.4	62.1	47.1	45.0	42.4	40.7
2019-08-15	23:00:00	01:00:00.0	42.9	38.3	55.5	45.6	44.7	42.4	40.5
2019-08-16	00:00:00	01:00:00.0	44.1	38.0	66.7	46.9	46.0	43.2	40.7
2019-08-16	01:00:00	01:00:00.0	42.1	37.2	66.1	44.8	43.9	41.4	39.4
2019-08-16	02:00:00	01:00:00.0	42.1	37.1	55.1	45.2	44.3	41.4	39.2
2019-08-16	03:00:00	01:00:00.0	43.2	35.8	62.8	47.2	46.2	41.8	38.9
2019-08-16	04:00:00	01:00:00.0	45.8	39.2	56.7	48.6	47.9	45.2	43.0
2019-08-16	05:00:00	01:00:00.0	48.1	42.2	67.5	49.9	49.0	46.9	44.8
2019-08-16	06:00:00	01:00:00.0	50.7	43.3	73.0	53.9	52.1	48.7	46.4
2019-08-16	07:00:00	01:00:00.0	51.1	46.3	79.4	53.5	52.4	49.8	48.4
2019-08-16	08:00:00	01:00:00.0	65.9	47.3	84.1	69.6	69.1	59.4	50.2
2019-08-16	09:00:00	01:00:00.0	70.3	67.2	89.2	73.5	71.5	68.9	68.0
2019-08-16	10:00:00	01:00:00.0	69.5	66.9	90.5	69.8	69.4	68.7	67.9
2019-08-16	11:00:00	01:00:00.0	68.2	66.7	73.5	69.0	68.7	68.1	67.7
2019-08-16	12:00:00	01:00:00.0	68.9	67.2	77.4	69.9	69.6	68.8	68.1
2019-08-16	13:00:00	01:00:00.0	68.6	66.6	79.8	69.4	69.2	68.5	67.8

Date	Time	Run Duration	LAeq	LAFmin	LAFmax	LAF5.00	LAF10.00	LAF50.00	LAF90.00
2019-08-16	14:00:00	01:00:00.0	67.7	49.8	94.7	70.1	66.0	54.6	52.3
2019-08-16	15:00:00	01:00:00.0	70.6	48.4	91.6	76.2	72.5	61.4	51.2
2019-08-16	16:00:00	01:00:00.0	51.5	48.1	69.3	52.5	52.2	51.1	49.6
2019-08-16	17:00:00	01:00:00.0	49.5	41.2	73.9	52.6	50.5	45.6	43.6
2019-08-16	18:00:00	01:00:00.0	47.5	40.4	66.7	51.3	49.5	45.2	43.1
2019-08-16	19:00:00	01:00:00.0	47.7	40.3	71.1	52.2	49.5	44.9	42.9
2019-08-16	20:00:00	01:00:00.0	51.8	38.9	72.5	58.4	55.5	45.1	42.0
2019-08-16	21:00:00	01:00:00.0	48.1	39.7	69.6	54.5	49.1	43.8	41.9
2019-08-16	22:00:00	01:00:00.0	44.7	39.2	61.4	47.4	46.2	43.4	41.3
2019-08-16	23:00:00	01:00:00.0	44.0	39.5	52.9	46.6	45.9	43.6	41.7
2019-08-17	00:00:00	01:00:00.0	45.3	39.5	64.0	47.7	46.7	44.2	42.2
2019-08-17	01:00:00	01:00:00.0	44.9	39.2	59.3	47.9	47.0	44.2	41.8
2019-08-17	02:00:00	01:00:00.0	44.2	27.9	65.4	47.5	46.5	43.2	40.2
2019-08-17	03:00:00	01:00:00.0	42.6	34.8	55.1	46.4	45.3	41.5	38.8
2019-08-17	04:00:00	01:00:00.0	41.7	35.8	56.5	45.3	43.9	40.1	38.1
2019-08-17	05:00:00	01:00:00.0	44.7	37.1	68.6	48.2	46.5	42.2	39.7
2019-08-17	06:00:00	01:00:00.0	49.7	39.5	75.4	54.4	50.9	44.9	42.2
2019-08-17	07:00:00	01:00:00.0	49.2	41.3	69.8	53.2	50.8	45.9	43.5
2019-08-17	08:00:00	01:00:00.0	63.9	49.1	90.2	66.8	64.0	55.2	51.9
2019-08-17	09:00:00	01:00:00.0	70.7	57.3	92.3	76.7	74.7	62.3	60.3
2019-08-17	10:00:00	01:00:00.0	72.6	57.0	92.7	78.4	74.8	65.0	60.4
2019-08-17	11:00:00	01:00:00.0	65.2	43.3	92.3	68.7	66.3	59.9	49.1
2019-08-17	12:00:00	01:00:00.0	51.2	43.2	76.0	55.0	52.9	48.3	45.8
2019-08-17	13:00:00	01:00:00.0	51.3	42.3	73.2	55.7	52.6	47.4	45.2
2019-08-17	14:00:00	01:00:00.0	51.6	40.7	76.2	56.5	53.2	47.6	45.1
2019-08-17	15:00:00	01:00:00.0	51.5	42.2	73.0	56.2	53.9	48.0	45.1
2019-08-17	16:00:00	01:00:00.0	50.6	39.8	78.8	53.6	51.8	47.9	45.5
2019-08-17	17:00:00	01:00:00.0	47.8	37.5	69.6	50.8	49.6	46.8	44.7
2019-08-17	18:00:00	01:00:00.0	50.4	42.0	69.0	53.4	50.8	47.0	45.1
2019-08-17	19:00:00	01:00:00.0	48.4	39.2	74.0	52.2	49.2	45.4	43.3
2019-08-17	20:00:00	01:00:00.0	48.3	40.4	74.9	51.0	49.4	45.8	43.3
2019-08-17	21:00:00	01:00:00.0	46.3	41.0	61.4	49.1	48.1	45.6	43.7
2019-08-17	22:00:00	01:00:00.0	47.2	39.6	72.6	50.4	48.5	45.1	42.8
2019-08-17	23:00:00	01:00:00.0	44.9	39.9	60.1	47.6	46.8	44.3	42.4
2019-08-18	00:00:00	01:00:00.0	44.9	39.4	56.3	47.6	46.8	44.3	42.2
2019-08-18	01:00:00	01:00:00.0	45.2	39.6	59.7	48.2	47.2	44.4	42.3
2019-08-18	02:00:00	01:00:00.0	45.6	39.8	64.0	48.5	47.6	44.8	42.7
2019-08-18	03:00:00	01:00:00.0	46.3	38.0	57.5	49.4	48.5	45.6	43.2
2019-08-18	04:00:00	01:00:00.0	46.3	38.2	62.0	49.9	48.4	45.2	42.7
2019-08-18	05:00:00	01:00:00.0	47.0	36.7	65.5	51.3	49.4	44.9	42.4
2019-08-18	06:00:00	01:00:00.0	51.1	39.5	72.8	56.7	53.5	46.3	43.3
2019-08-18	07:00:00	01:00:00.0	49.4	37.1	66.4	54.0	51.0	46.4	44.2
2019-08-18	08:00:00	01:00:00.0	47.4	40.4	61.8	51.3	49.7	45.9	43.5

Date	Time	Run Duration	LAeq	LAFmin	LAFmax	LAF5.00	LAF10.00	LAF50.00	LAF90.00
2019-08-18	09:00:00	01:00:00.0	49.5	41.9	74.0	52.7	50.3	46.0	44.0
2019-08-18	10:00:00	01:00:00.0	48.6	40.4	75.6	52.2	50.5	46.7	44.5
2019-08-18	11:00:00	01:00:00.0	49.0	40.7	67.5	53.2	50.6	46.3	43.9
2019-08-18	12:00:00	01:00:00.0	48.6	41.9	66.6	52.7	50.8	46.7	44.6
2019-08-18	13:00:00	01:00:00.0	47.2	40.3	72.2	49.9	48.3	45.3	43.3
2019-08-18	14:00:00	01:00:00.0	48.6	41.0	70.3	52.8	50.4	46.1	43.7
2019-08-18	15:00:00	01:00:00.0	52.9	41.0	67.8	60.2	55.2	46.3	43.7
2019-08-18	16:00:00	01:00:00.0	49.8	40.7	73.5	55.2	53.2	46.3	43.8
2019-08-18	17:00:00	01:00:00.0	47.4	40.8	74.0	50.1	48.3	45.3	43.4
2019-08-18	18:00:00	01:00:00.0	47.9	40.6	68.0	51.6	49.1	45.4	43.3
2019-08-18	19:00:00	01:00:00.0	49.9	40.7	71.4	54.7	51.0	45.5	43.4
2019-08-18	20:00:00	01:00:00.0	49.3	41.5	69.7	53.2	51.3	46.8	44.3
2019-08-18	21:00:00	01:00:00.0	48.0	40.6	69.4	49.9	48.6	45.7	43.6
2019-08-18	22:00:00	01:00:00.0	45.8	38.5	61.5	48.8	47.4	44.1	41.3
2019-08-18	23:00:00	01:00:00.0	42.6	37.1	59.9	45.9	44.7	41.3	39.5
2019-08-19	00:00:00	01:00:00.0	41.9	36.9	56.6	45.5	44.2	40.7	38.8
2019-08-19	01:00:00	01:00:00.0	40.4	34.3	52.5	44.0	42.7	39.5	37.5
2019-08-19	02:00:00	01:00:00.0	39.0	33.3	52.3	42.6	41.1	37.9	35.9
2019-08-19	03:00:00	01:00:00.0	39.9	34.1	54.5	43.9	42.3	38.6	36.5
2019-08-19	04:00:00	01:00:00.0	41.1	34.3	67.7	44.3	42.9	39.2	36.9
2019-08-19	05:00:00	01:00:00.0	45.4	36.2	66.2	48.9	47.2	43.1	40.1
2019-08-19	06:00:00	01:00:00.0	50.8	39.2	73.1	54.5	51.5	46.5	43.7
2019-08-19	07:00:00	01:00:00.0	49.0	42.5	70.6	51.4	49.5	47.0	45.3
2019-08-19	08:00:00	01:00:00.0	71.4	44.3	91.8	77.8	73.4	68.6	47.8
2019-08-19	09:00:00	01:00:00.0	69.1	49.2	92.4	70.1	69.0	61.7	52.3
2019-08-19	10:00:00	01:00:00.0	58.3	42.6	84.6	64.5	61.1	50.5	45.9
2019-08-19	11:00:00	01:00:00.0	62.8	44.1	89.8	66.2	63.4	55.8	49.1
2019-08-19	12:00:00	01:00:00.0	69.4	46.4	94.4	75.2	71.1	55.8	50.3
2019-08-19	13:00:00	01:00:00.0	62.3	46.7	82.0	67.7	61.3	50.7	48.6
2019-08-19	14:00:00	00:26:32.7	68.7	48.1	83.9	77.6	73.9	55.2	51.4

3.3 Dust

3.3.1 (D1) At the site boundary wall with Prussia Street.

Results to follow.